



ADDENDUM No. 3

Strategy for Community-Led Local Development

1. LIG's Description:

“Local Initiative Group Glavinitsa – Sitovo Kraydunavska Dobrudzha” is established in 2011 and is registered under the Law of Non-Profit Legal Entities as a Public Benefit Association. The association, in which legal entities and individuals from the territory are members, is a voluntary, independent organization which, on the basis of public-private partnership and through its members contributes to the implementation of local people’s initiatives, following the principles of the EU’s Common Agricultural Policy for local development in the areas of: agricultural competitiveness, environmental protection, improving the quality of life and diversifying economic activities in rural areas, developing services and business, providing employment opportunities and harmoniously human resources development, especially in small settlements; generating and implementing new ideas, working with young people, exchanging information, borrowing experience from related organizations, cooperation with Bulgarian and foreign organizations, with Bulgarian state institutions, with local governments and administration, as well as with representatives of business and non-profit sector.

The Strategy for Community Led Local Development on the territory of operation of the “LIG Glavinitsa – Sitovo Kraydunavska Dobrudzha has a territorial scope that coincides with the administrative – territorial borders of the municipalities of Glavinitsa and Sitovo from Silistra District and includes all 35 settlements – 1 city and 34 villages. The LIG’s territory covers the entire geographical and administrative area of the two neighboring municipalities. The territory has continuous borders and similar characteristics, as both municipalities – Glavinitsa and Sitovo, are part of Silistra District, falling in the Northeastern-planning region, the eastern Danube plain in Northeastern Bulgaria. The borders of the two municipalities Glavinitsa and Sitovo are outlined: to the north – from the Danube River, to the east is the municipality of Silistra, to the south – the municipalities of Dulovo, Zavet and Isparih, to the west – the municipality of Tutrakan.

The population of the territory is of mixed ethnic composition. Economic activity is mainly related to agriculture and processing of agricultural products, non – agricultural activities in the form of micro and small enterprises are less developed.

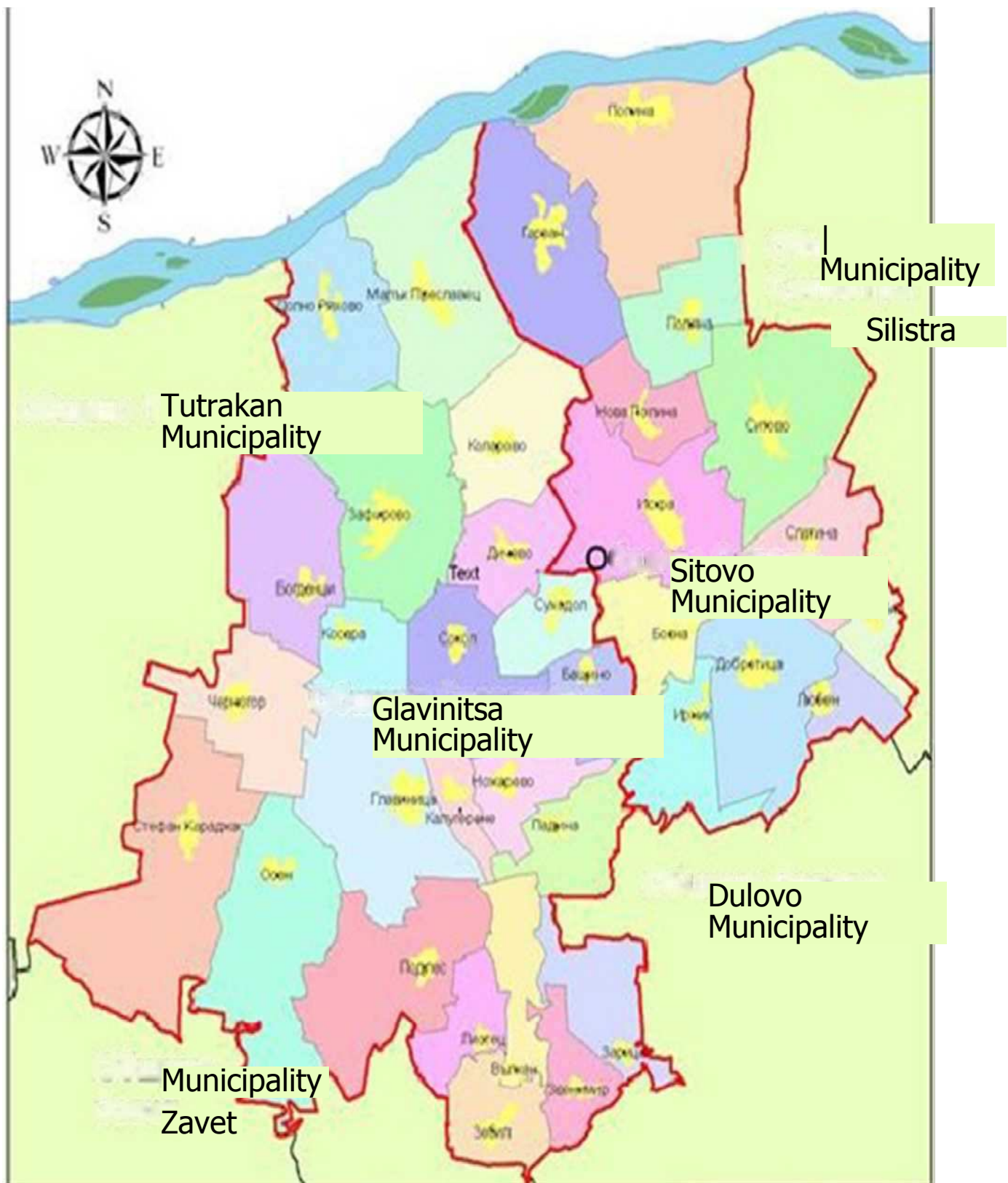
The LIG is actively working to involve the local community in the LEADER approach, which in the 2014 – 2020 programming period is implement through integrated and multi sectoral strategies for Community led local development – CLLD, and is a favorable opportunity to achieve upward, balanced and sustainable development, called from the local people

“TOGETHER FOR A PROSPEROUS KRAYDUNAVSKA DOBRUDZHA”.

1.1. Data for municipalities and settlements that fall within the territory of the LIG:

- list of the municipalities, covered by LIG	<p>Glavinitsa Municipality Sitovo Municipality</p>																																																																												
-List of settlements, covered by LIG;	<table border="0"> <tr> <td><i>Municipality, settlement,</i></td> <td><i>inhabita</i></td> </tr> <tr> <td>Glavinitsa Municipality</td> <td>10243</td> </tr> <tr> <td>Bashtino village</td> <td>172</td> </tr> <tr> <td>Bogdantsi village</td> <td>649</td> </tr> <tr> <td>Valkan village</td> <td>318</td> </tr> <tr> <td>Town of Glavinitsa</td> <td>1</td> </tr> <tr> <td>Dichevo village</td> <td>412</td> </tr> <tr> <td>Dolno Ryahovo village</td> <td>290</td> </tr> <tr> <td>Zafirovo village</td> <td>808</td> </tr> <tr> <td>Zvenimir village</td> <td>342</td> </tr> <tr> <td>Zebil village</td> <td>646</td> </tr> <tr> <td>Zaritsa village</td> <td>412</td> </tr> <tr> <td>Kalugerene village</td> <td>530</td> </tr> <tr> <td>Kolarovo village</td> <td>321</td> </tr> <tr> <td>Kosara village</td> <td>157</td> </tr> <tr> <td>Listets village</td> <td>494</td> </tr> <tr> <td>Malak Preslavets</td> <td>237</td> </tr> <tr> <td>Nozharevo village</td> <td>476</td> </tr> <tr> <td>Osen village</td> <td>91</td> </tr> <tr> <td>Padina village</td> <td>15</td> </tr> <tr> <td>Podles village</td> <td>142</td> </tr> <tr> <td>Sokol village</td> <td>335</td> </tr> <tr> <td>Stefan Karadzha</td> <td>680</td> </tr> <tr> <td>Suhodol village</td> <td>626</td> </tr> <tr> <td>Chernogor village</td> <td>397</td> </tr> <tr> <td>Sitovo Municipality</td> <td>5110</td> </tr> <tr> <td>Bosna village</td> <td>3</td> </tr> <tr> <td>Garvan village</td> <td>3</td> </tr> <tr> <td>Dobrotitsa village</td> <td>67</td> </tr> <tr> <td>Irnik village</td> <td>73</td> </tr> <tr> <td>Iskra village</td> <td>1828</td> </tr> <tr> <td>Lyuben village</td> <td>6</td> </tr> <tr> <td>Nova Popina village</td> <td>62</td> </tr> <tr> <td>Polyana village</td> <td>1</td> </tr> <tr> <td>Popina village</td> <td>5</td> </tr> <tr> <td>Sitovo village</td> <td>7</td> </tr> <tr> <td>Slatina village</td> <td>85</td> </tr> <tr> <td>Yastrebna village</td> <td>5</td> </tr> </table>	<i>Municipality, settlement,</i>	<i>inhabita</i>	Glavinitsa Municipality	10243	Bashtino village	172	Bogdantsi village	649	Valkan village	318	Town of Glavinitsa	1	Dichevo village	412	Dolno Ryahovo village	290	Zafirovo village	808	Zvenimir village	342	Zebil village	646	Zaritsa village	412	Kalugerene village	530	Kolarovo village	321	Kosara village	157	Listets village	494	Malak Preslavets	237	Nozharevo village	476	Osen village	91	Padina village	15	Podles village	142	Sokol village	335	Stefan Karadzha	680	Suhodol village	626	Chernogor village	397	Sitovo Municipality	5110	Bosna village	3	Garvan village	3	Dobrotitsa village	67	Irnik village	73	Iskra village	1828	Lyuben village	6	Nova Popina village	62	Polyana village	1	Popina village	5	Sitovo village	7	Slatina village	85	Yastrebna village	5
<i>Municipality, settlement,</i>	<i>inhabita</i>																																																																												
Glavinitsa Municipality	10243																																																																												
Bashtino village	172																																																																												
Bogdantsi village	649																																																																												
Valkan village	318																																																																												
Town of Glavinitsa	1																																																																												
Dichevo village	412																																																																												
Dolno Ryahovo village	290																																																																												
Zafirovo village	808																																																																												
Zvenimir village	342																																																																												
Zebil village	646																																																																												
Zaritsa village	412																																																																												
Kalugerene village	530																																																																												
Kolarovo village	321																																																																												
Kosara village	157																																																																												
Listets village	494																																																																												
Malak Preslavets	237																																																																												
Nozharevo village	476																																																																												
Osen village	91																																																																												
Padina village	15																																																																												
Podles village	142																																																																												
Sokol village	335																																																																												
Stefan Karadzha	680																																																																												
Suhodol village	626																																																																												
Chernogor village	397																																																																												
Sitovo Municipality	5110																																																																												
Bosna village	3																																																																												
Garvan village	3																																																																												
Dobrotitsa village	67																																																																												
Irnik village	73																																																																												
Iskra village	1828																																																																												
Lyuben village	6																																																																												
Nova Popina village	62																																																																												
Polyana village	1																																																																												
Popina village	5																																																																												
Sitovo village	7																																																																												
Slatina village	85																																																																												
Yastrebna village	5																																																																												
- number of inhabitants of the territories covered by the LIG	Glavinitsa Municipality – 10 243 inhabitants																																																																												
	Sitovo Municipality – 5110 inhabitants																																																																												
	TOTAL of 15 353 inhabitants																																																																												

1.2. Map of the territory:



Non-profit association „LIG Glavinitsa – Sitovo Kraydunavska Dobrudzha” – „Together for a prosperous Kraydunavska Dobrudzha“

2. Description of the process of community participation in the development of the strategy:

2.1. Description of the process – held meetings, seminars, conferences, training, and public discussions:

The preparation of the strategy was carried out in the process of pre-planned and purposefully conducted activities with the representatives of the local community on the territory. Activities include information campaigns; concluding expert studies of the characteristics and potential of the territories; research of the stakeholders, their needs and attitudes towards the Community Led local development approach and the developed strategy. The **9 meetings, seminars, and conferences** provided information on the Community-led local development approach, its principles, the participation of local people, companies, and organizations in “bottom-up” strategic planning, as well as consulting with various representatives of the community and stakeholders to identify problems, needs, and attitudes. Consecutively, **three public discussions** were held on the strategic framework, selection of measures from the rural Development Program and Operative Program, the financial allocation, the criteria for project evaluation, the overall strategy. With the participation of the community, the goals, priorities, and measures, as well as the financial parameters and the indicators for implementation and result are presented.

Compliance with the proposals of local companies, organizations, and citizens was monitored to comply with the principle of “bottom-up” planning. Activities have been implemented **to provide human, material, financial, and information resources:** a local team has been formed, experts and trainers have been involved, an office has been organized; presentation and information materials have been prepared and media publications have been realized; a website <http://www.mig.glavinitsa-sitovo.org/bg/> was created and popularized with the possibility to fill in questionnaires and feedback; the maximum number of representatives of the local community have been informed through **information campaigns and working meetings** on the territory of the two municipalities, **consultations** have been held.

One two-day training of the LIG team and 2 one-day pieces of training for local leaders were conducted. To identify the problems and needs, as well as the potential for the development of the territory, **studies and analyses** have been conducted, which included surveys and interviews with local participants from different social and professional groups. To get a chance for real application of the approach on the territory, in 2017, LIG is mobilizing local human potential again. The performed preparatory activities with the participation of the local community are:

Conducting information meetings in settlements:

- 3rd May 2017 at 10:00, Mayor’s Office of Stefan Karadzha village, Glavinitsa Municipality
- 3rd May 2017 at 11.30, Mayor’s Office of Osen village, Glavinitsa Municipality
- 9th May 2017 at 10:00, Mayor’s Office of Iskra village, Sitovo Municipality
- 9th May 2017 at 11:30, Mayor’s Office of Nova Popina village, Sitovo Municipality

Conducting an information conference for 50 participants:

- 12th May 2017 at 10:00, the town of Glavinitsa, Municipality’s Meeting Room

Conducting a one-day information meeting/seminar for 20 participants:

- 29th May 2017 at 10:00, the town of Glavinitsa, Municipality's Meeting Room
- 30th May 2017 at 10:00 o'clock, Sitovo village, Municipality's Meeting Room

Conducting a one-day information meeting to consult with the local community for at least 20 participants:

- 7th June 2017 at 10:00, the town of Glavinitsa, Municipality's Meeting Room

Conducting a one-day workshop to consult the preparation of the strategy for at least 10 participants:

- 16th June 2017 at 10:00, Sitovo village, Municipality's Meeting Room **Conducting**

a two-day training for the LIG team, including representatives of the partners (for at least 10 participants):

- 10th July 2017 at 10:00, the town of Glavinitsa, Municipality's Meeting Room
- 11th July 2017 at 10:00, the town of Glavinitsa, Municipality's Meeting Room

Conducting two one-day pieces of training for local leaders for 20 participants

- 25th July 2017 at 10:00, the town of Glavinitsa, Municipality's Meeting Room
- 26th July 2017 at 10:00, the town of Glavinitsa, Municipality's Meeting Room

Conducting a public discussion of the developed Strategy for Community-led local development

- 19th July 2017 at 10:00, the town of Glavinitsa, Municipality's Meeting Room
- 16th August 2017 at 10:00, the town of Glavinitsa, Municipality's Meeting Room
- 17th August 2017 at 10:00, Sitovo village, Municipality's Meeting Room

Attachments: Invitations, lists concerning thereto; media publications.

2.2. Stakeholder groups /sectors involved in strategy development:

Public sector	Local government – Glavinitsa Municipality /Municipality Council, Municipality administrations and Mayor’s Offices/ Local government – Sitovo Municipality /Municipality Council, Municipality administrations and mayor’s Offices/; State and Municipal institutions; Municipality educational institutions /schools and kindergartens/.
Business sector	Farmers – individuals with small farms; Farmers – sole proprietors and legal entities under the Commercial Law with larger farms; Enterprises for primary processing of agricultural products; Production micro-enterprises from the food and light industry; Micro-enterprises from trade, services, and public catering.
Non-profit sector	Community Centres; Non-governmental organizations for the development of civil society, social integration, educational qualifications, and human development, and in support of vulnerable and marginalized groups; Non-governmental organizations for research, promotion, and preservation of the literary and cultural-historical heritage; Socially active citizens; Citizens – representatives of vulnerable and minority groups.

3. Description of the situation in the area at the time of application:

3.1. Analysis of the needs and potential for the development of the territory:

The analysis of the current situation on the territory of the LIG is a starting point for the strategic planning, corresponding to the potential and the studied needs, including funding needs in the most important areas determined by local participants. Prepared „**Study and analysis on the territory of the municipalities of Glavinitsa and Sitovo and the public interest on the preparation of a Strategy for Community led-local development in the programming period 2014 – 2020, funded by the European Agricultural Fund for Rural Development or by more than one of the European Structural and Investment Funds**” (Study 1) provides detailed information on individual aspects of socio-economic development and concludes with summary conclusions - a combination of existing problems, stated needs and available potentials. The identified current characteristics, problems, and potential are the basis for the SWOT analysis, which aims to highlight the most important moments in the historical and modern development of municipalities and to point to the necessary measures.

The study focuses on geographical, economic, demographic, and social characteristics; the tendencies and regularities in the functional-spatial development, the socio-economic and ecological condition of the municipalities of Glavinitsa and Sitovo are covered, within the scope of the LIG, which are briefly the following:

Territory and natural-geographical characteristics: The total area of the two municipalities is 752 sq. Km, of which 481 sq. Km is the area of Glavinitsa Municipality and 271 sq. Km – of Sitovo Municipality. The average altitude of Sitovo Municipality is 75 meters, and of Glavinitsa Municipality – 115 m. The terrain, for the most part, is hilly and flat, with different altitudes – from 15 m. Near the Danube, to 200 m. in the settlements far to the river. It falls in the

temperate continental climate zone. Hydrographically, the territory belongs to the Danube water management region. Due to the underdeveloped industry, there is no chemical pollution of the natural environment. **The territory of the municipalities of Glavinitsa and Sitovo is in a balance between the “exploitation” and preservation of the environment**, but with a relatively low degree of its valorisation (preservation, development, and use) in a broad sense – economic, environmental, social and cultural. The high share of protected areas of the European network NATURA 2000 – 35 % is a positive factor – sets a **standard for territory with a high value of natural resources, providing an opportunity for the production of ecological products**, registration of a territorial mark as a quality mark of local products.

According to the **degree of improvement and development of the technical infrastructure**, the settlements in the two municipalities have similar characteristics – all are electrified and supplied with water. The municipality road network has compromised selections, which hinder safe traffic. Communications and information and communication technologies are not at a level corresponding to modern development, there are settlements without internet access. The urbanized territory of the municipal centres is more developed than the one in the villages.

Demographic situation – age, ethnicity, education: there is an unfavourable trend towards declining and aging population, migration processes, and depopulation of villages. The ethnic structure of the territory has the highest share of the Turkish ethnic group – 50.45%, the Bulgarian ethnic group is 39 %, and the rest of the population is self – determined by the Roma and other ethnic groups. The share of the population that self – identified with the Roma ethnic group is low-

4.85 %, but in reality, it is more. The share of the population with only primary education is large – 37.7 % for the municipality of Glavinitsa and 39.7 % for the municipality of Sitovo, which is also explained by the ethnic structure.

Unemployment: As of 2016, the unemployment rate in the municipality of Glavinitsa is 33.2 %. Unemployment in the municipality of Sitovo is also relatively high – 25.5 %. There is a close link between unemployment and the level of education and qualifications. Unemployment is highest among the population with primary and lower education, mainly among the Roma.

Educational institutions and services: On the territory of Glavinitsa municipality, there are 3 primary schools, 1 high school, 1 united kindergarten with 11 outsourced groups. On the territory of Sitovo municipality, there are 3 primary schools, 1 vocational high school in agriculture with several specialties, 2 all-day kindergartens with 1 affiliate.

Problems: the buildings have not been renovated, the technical equipment is outdated, there is a shortage of computers in the schools, the same type of programs for extracurricular activities for students.

Health facilities and services: The health infrastructure in the municipality of Glavinitsa is represented by a polyclinic and a centre for emergency medical care /branch of the Center for Emergency Medicine, Silistra/, located in the town of Glavinitsa. The state of health care on the territory is unsatisfactory due to the limited access to health services of a large part of its population, including uninsured persons. There are health services in a few settlements. The health care is provided by 4 dentists, 7 general practitioners, and 8 medical health care specialists. The

inpatient treatment is carried out in Tutrakan Multi-profiled Hospital for active treatment. There are two pharmacies on the territory.

The cultural infrastructure of the territory is represented to the greatest extent by the community centers (total 33). They preserve folk traditions and cultural customs, develop amateur activities, and have a small library fund. The buildings need renovation.

The sports infrastructure consists of sites for sports and social tourism. The traditional sports are basketball, volleyball, football, and field hockey.

The economic profile of the territory is dominated by agriculture. **Agriculture** is a major source of income and employment for the population. The prospects are related to the entry of new investments, technological renewal, and improvement of product quality, professional marketing, and management based on new knowledge and skills. The agricultural lands are 316 708 decares, of which 273 965 decares are arable. **The forest areas** provide raw materials from timber and firewood, opportunities for outdoor recreation, the territorial basis for hunting and game breeding.

Industry and production: The share of small and micro enterprises in the sectors of manufacturing, services, agriculture, and forestry, as well as in trade predominates. For the most part, they are characterized by low competitiveness and a small amount of added value.

Investment activity: Investments in the economic sector are almost non-existent, which puts the economy at a disadvantage. Local business projects need to be initiated, both for agriculture and processing and for non-agricultural activities.

An important part of the analysis of the situation in Study 1 is the summarized answers in the surveys, which provide information on:

- Respondents, their needs, and potential stakeholders in developing a Community led-local Development Strategy;
- The territorial conditions, the socio-economic and ecological conditions, as well as the local specifics for the territory of “LIG “Glavinitsa – Sitovo – Kraydunavska Dobrudzha”;
- Strengths and weaknesses, opportunities and threats in the territory;
- The dimensions of the awareness, interest, and attitudes of the local community and the stakeholders on the territory of the LIG for Community led-local development;
- The willingness of stakeholders to participate in the Community led-local development approach.

The needs identified in the studies outline the need of:

- Sustainable growth and balanced diversification of the economy of the territory;
- Reduction of negative demographic trends and social stereotypes;
- Ensuring equal access of the population to basic services in the rural area;
- Improving the demographic potential, overcoming the depopulation, attracting and retaining specialists working on the territory of the LIG;
- Making the territory of GLAVINITSA and SITOVO attractive for investments and the development of small and medium business, as a generator of employment and income.

Concerning **the needs for investments in the public and private sector**, interest has been expressed in projects under measures of the Rural Development Program, Operational Program for

Human Resources Development, and Operational Program Science and Education for Smart Growth. There is no declared interest in the other Community led-local development programs included in the approach and the reasons for this are due to the specifics of the local economy. For measures under operational Program Environment – the territory has potential, but inadmissibility has been established, as the protected areas and Natura 2000 areas on the territory of the LIG are not included in Annex 1 to the Guidelines of the Managing Authority of environment Operational Program for Community led-local development.

THE POTENTIAL AND NEEDS OF THE LIG's TERRITORY:

- The outlined economic profile of the territory with a dominant agricultural orientation, based on favourable agro-climatic conditions and traditions, creates a need for **investment in agriculture including for the development of small farms, in non-agricultural activities, and the processing and marketing of agricultural products.**

- Stakeholders state the need for **better employment and professional realization**, related to the adaptation of enterprises, workers, and entrepreneurs to change, the introduction of social and non-technological innovations in local enterprises; integration of inactive people as a potential labour resource;

- There is a need to offer quality public services that require investment in the creation, improvement, or expansion of all types of **small-scale infrastructure** and such for public use and local tourism.

- The need for **access to quality education** and increasing the efficiency of the educational process has been identified, given the presence of children and students from marginalized groups, including Roma, their parents, guardians, etc.;

- A need for a **new type of social and health services** has been identified, meeting individual and group needs, with a focus on local marginalized communities;

- Preservation of traditions in original and amateur manifestations of different ethnic groups, cultural heritage, and natural resources is a prerequisite for implementing measures related to **research, preservation, and utilization of rural heritage** with added value to socio-economic development and revitalization of the territory.

The utilization of local **agricultural products** in **competitive processing enterprises** through the creation of **technological renewal**, improving product quality, **non-technological innovation, and improving the skills** of entrepreneurs, workers, and the self-employed is a prospect for the development of the territory.

The measures and activities aimed at infrastructure and the economy must be implemented in balance with the development of human resources, including adequate measures for educational, social, and labour integration of vulnerable groups and marginalized communities.

The results of the questionnaire survey on the level of awareness, interest, and attitudes, and on the readiness for the participation of stakeholders in the territory for the preparation of a Community led-local development Strategy, lead to the following **main conclusions**:

- The prevailing opinions are on the need to promote the production and processing of agricultural products using traditional or ecological technology, as well as to develop a variety of local non-agricultural economic activities, including new.

- The need for the development of social, educational, and cultural infrastructure and services in these areas has been stated.

- Respondents show readiness and attitude to generate project ideas;
- Non-profit association “LIG “Glavinitsa – Sitovo Kraydunavska Dobrudzha” is a recognizable structure of the territory and successfully implements the preparation of strategy and promotion of the Community led-local development approach. Its work is characterized by perseverance, professionalism, and trust by the community, which shows high awareness, interest, attitudes, and willingness to participate.

The second study is planned and prepared as a toolkit based on the results of the first, and is on the results of the first, and is on **”Research and analysis of the environment, attitudes, the involvement of stakeholders participants) in the development of the Strategy for community led-local development by Non-profit association “LIG “Glavinitsa – Sitovo Kraydunavska Dobrudzha” (Study 2).** It provides the framework of the Strategy in terms of the stated interests and attitudes of stakeholders and their intentions, the thematic area, and type of projects, their financial parameters.

Analysed data from the survey on the attitudes and interest of the local community in the implementation of the Strategy show preferences, **primarily** related to:

- Revitalization, development, and support of existing local traditional economic activities, productions, and services, but also the realization of new business ideas and undertakings;
- Improving the environment and the quality of life, development, and stimulation of the local human resources, protection, and development of the local natural and cultural resources;
- Generation and management of projects for sustainable development of the territory, which will lead to increasing the capacity of the local community for larger initiatives.

The data collected and synthesized from the survey on the involvement, attitudes, and readiness of stakeholders for the implementation of Strategy for Community led-local development are related to:

- Development of agricultural holdings according to their scale;
- Development of non-agricultural activities, including innovative and/or technological;
- Creation, improvement, or expansion of the municipal infrastructure;
- Processing and/or marketing of agricultural products;
- Diversification and utilization of the cultural and natural rural heritage;
- Development of local tourist infrastructure for public use;
- Improving the quality of jobs and the working environment;
- Raising the entrepreneurial culture to improve the organization of labour, processes, human resource management, production cycles;
- Social, health, educational, or employment integration of marginalized groups at risk of poverty and social exclusion, especially representatives of Roma communities.

3.1. Identified groups of stakeholders on the territory of the LIG:

Public sector:

- 1) Local government: Glavinitsa Municipality, Municipality Council, Municipality administration and Mayor’s Offices;

- 2) Local government: Sitovo Municipality, Municipality Council, Municipality administration and Mayor's Offices;
- 3) State and municipality institutions;
- 4) Municipality educational institutions – schools and kindergartens.

Business sector

- 1) Farmers – individuals with small farms;
- 2) Agricultural producers – sole proprietors and legal entities under the Commercial law with larger farms;
- 3) Enterprises for primary processing of agricultural products;
- 4) Production micro-enterprises from the food and light industry;
- 5) Micro-enterprises in the field of trade, services, and public catering.

Non-profit sector

- 1) Community centers;
- 2) Non-governmental organizations for the development of civil society, social integration and personal realization, educational qualification and development of human potential, and in support of vulnerable marginalized and minority groups;
- 3) Non-governmental organizations for research, promotion, and preservation of the literary and cultural-historical heritage;
- 4) Socially active citizens;
- 5) Citizens – representatives of vulnerable and minority groups.

3.2. Analysis of strengths and weaknesses, opportunities, and threats:

The SWOT analysis was developed for strategic planning for the territory of the LIG.

The strengths are seen as a resource, skill, or another advantage that the territory has over others and is a distinctive quality that gives a comparative advantage. The limitations or lacks of resources, skills, and abilities that seriously hinder the development of the territory are related to the **weaknesses**. They characterize their underdevelopment compared to other territories. **Opportunities** are seen as the most favourable elements of the environment because they are untapped resources. The most unfavourable segments of the external environment are defined as **threats**. They place barriers to the current or future (desired) state of the territory.

The SWOT analysis reveals many strengths and weaknesses, opportunities, and threats. However, only the most important 10, for the respective cells of the matrix were selected. There are certain dependencies between the quadrants of the SWOT analysis. The link between opportunities and strengths creates the levers of development. It should be used in constructing the LIG's strategy. The relationship between weaknesses and threats forms the main problems of the development of the territory. The relationship between strengths and threats determines the risks of development, and the relationship between weaknesses and opportunities brings out the limitations of development in the territory.

After a qualitative analysis, the content was compiled, which was subjected to quantitative measurements of the main factors presented in the table. A scoring method was used (1-10, with 10 being the highest). The assessment of the factor is correlated with the influence. The obtained

arithmetic mean estimates are plotted on the ordinate and abscissa of the coordinate system, after which positioning is performed according to the quadrant, in which it occupies the largest area. Possible 4 positions define 4 development strategies:

- The most favourable strategic position is to undertake and aggressive strategy;
- The development strategy is diversified because it is aimed at using the existing favourable conditions for development and reducing weaknesses.
- The defence strategy is the most unfavourable. If to fall into this position, must look for a chance to survive and then move on to the above.
- The recovery strategy aimed at rescuing weaknesses while reducing or limitations threats as far as possible.

Table. SWOT-analysis of the territory of LIG (Grades - from 1 to 10)

STRENGTHS	Grades 1 10	WEAKNESSES	Grades 1-10
1. A clear vision, desire, and motivation for development on the territory of the LIG as a socio-economic centre giving the local community security, a good living environment, and prosperity. Increased local initiative.	9	A small number of local specialists to work on projects with an active attitude to the problems of the territory, limited financial resources.	3
2. Activation of the local human potential in public life and utilization of the natural resources and cultural heritage.	9	Educational, health, and social infrastructure concentrated in the municipal centers. Low provision of the population with medical staff.	6
3. Preserved natural environment and richness of natural resources – forests, flora, fauna, natural landmarks, and protected areas.	10	Lack of organized access to natural landmarks neglected opportunities for the development of alternative tourism. Unidentified resources.	5
4. Functional sports facilities. Availability of community centers for cultural activities.	5	Weak penetration of the private sector in most of the service activities (education, sports, and recreation, culture)	3
5. Material investments in agricultural and non – agricultural activities to increase energy and resource efficiency.	5	Low competitiveness and degree of modernization of the local economy, lagging in technological development.	10
6. Preserved traditional agricultural practices such as growing fruit, vegetables, and livestock. Availability of agricultural land suitable for organic farming.	10	Existence of many farmers growing products only to meet their own needs. Obsolete machinery on farms.	9
7. Existence of demographic potential in the administrative centers – Glavinitsa and Sitovo village, as well as the availability of free labour and labour force, relatively cheap labour.	8	Risk of depopulation of large parts of the territory due to migration, negative growth, poor quality jobs; unemployment, and low income. Vulnerable and minority groups in social isolation.	4
8. Reformed and restructured activities: education, healthcare, social activities, culture.	8	Depreciated Community centers buildings on the territory and limited opportunities for cultural and social activities.	3
9. Rehabilitated infrastructure in part of the territory.	7	Infrastructure deficits – a poor condition of the street network, lack of sewerage in almost all settlements.	7
10. Overcoming migration processes, retaining young people.	4	Lack of ideas and financial resources for the use of vacant sites.	5
75/10 =	7.5	55/10=	5.5

OPPORTUNITIES		THREATS	
1. Reducing unemployment and increasing the welfare of the local population.	9	The poor educational structure of the population. Increasing aid dependents.	7
2. Enrichment and development of cultural events through the revival of local art forms. Development of local production of goods and souvenirs.	6	Loss of cultural identity, damage to the way of life, cultural and value system of the local population.	3
3. Sustainable use of natural resources – forests, flora, fauna, natural landmarks, and protected areas.	10	Disruption of biodiversity. Deteriorating qualities of the environment and the natural landscape.	4
4. Organized participation of farmers in national and international exhibitions. Creating an affirmation of an iconic local product, organic farming.	8	Insufficient application of quality standards and poor advertising.	7
5. Access to investments in new technologies for the development of modern agriculture, product certification.	10	Ignorance or non-acceptance of the competitive advantages of farmers' organizations. Lack of investment in technological equipment.	
6. Social inclusion of vulnerable groups in the territory and development of social services. Improving the material base of healthcare.	9	Living in isolated communities, permanent lack of income. Low quality and imbalance of health services, leading to the lower health status of the population.	7
7. Creating a link between education and the needs of the labour market in the territory. Modernization of vocational education.	7	Lack of strategic views on the role of education. Lack of expert capacity.	2
8. Construction and reconstruction of existing infrastructure. Renovation of the building stock and green areas of the settlements.	8	Lack of investment to improve infrastructure. Inefficiency in the implementation of infrastructure projects in small villages with a declining population.	6
9. Attracting foreign investments.	6	Low entrepreneurial culture due to insufficient skills and general business environment in the territory. Lack of investments.	4
10. Promoting sport development.	7	Lack of opportunities for free time – sports, recreation, activities.	3
80/10=	8	48/10=	4,8

The results of the SWOT-analysis show that the territory of Non-profit association “LIG “Glavinitsa – Sitovo Kraydunavska Dobrudzha” is positioned mainly in quadrant I, which requires priority implementation of an aggressive strategy, which may be in direction of:

- Establishment of a “bank of local strategic projects” for financing through the Strategy for Community-led local development;

- Entering new markets, marketing advertising, the introduction of standards and technologies, including in human resources, assuming competitiveness;
- Capacity building of the LIG to influence the overall development.

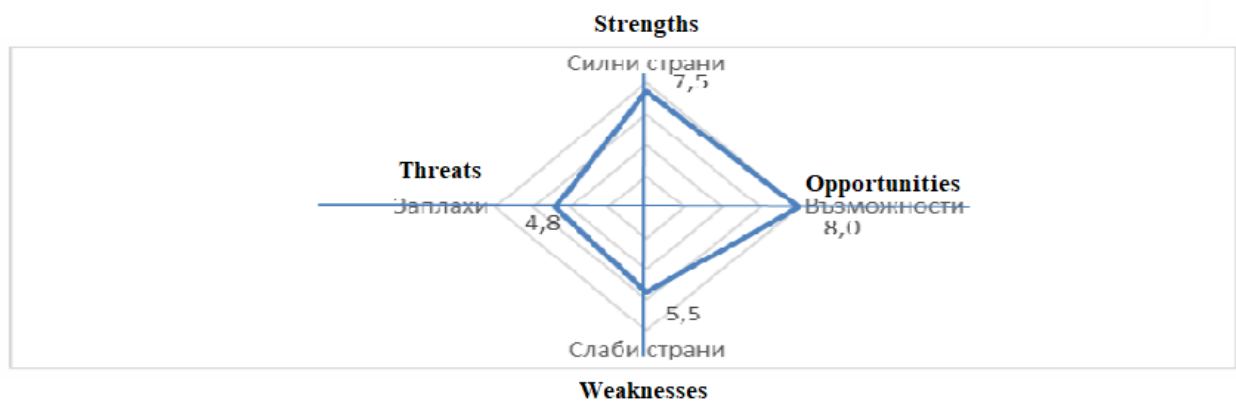
There is an opinion that actions are needed to use the opportunities and eliminate threats for future periods, which is also a priority for the LIG.

Two main approaches can be derived, with a predominant emphasis on the first:

- An investment approach in which stakeholders play a significant role in the implementation of strategically important local investment projects for the territory.
- Resource approach, built mainly on the use of existing natural resources, as well as the development of productions with higher benefit.

The investment approach imposes the need to provide external financing

The SWOT-analysis allows summarizing that the territory of the non-profit association LIG “Glavinitsa – Sitovo Kraydunavska Dobrudzha” has significant potential for **overcoming backwardness and achieving steadily growing living, business, social, educational, and**



labour realization through investment support for public and business significant projects based on local resources.

Quantified SWOT analysis (chart) and strategy guidelines:

The result of the analysis of the Strengths and weaknesses, opportunities and threats (SWOT) of LIG “LIG “Glavinitsa – Sitovo Kraydunavska Dobrudzha” is characterized by the following assessments: **strengths** (7.5), **weaknesses** (5.5), **opportunities** (8.0), and the size of **threats** is (4.8) as can be seen from the results of the quantified SWOT values of the analysis factors position the figure, with higher values of opportunities and strengths. Being in the first quadrant defines the possible strategy as aggressive, i.e. development policy is based on strengthening strengths and seizing opportunities. The pronounced quantitative dominance of some factors over others is a convincing argument for the advantages of an aggressive development strategy.

The main directions of the LIG’s strategy, resulting from the SWOT – analysis:

- ⇒ The strategy should focus on the use of strengths;
- ⇒ Opportunities for development create conditions for significant positive changes;
- ⇒ Strengthen strengths, to use the opportunities, and limit threats. (*Applications: Studies and analyses – Study 1 and Study 2*)

3.3. Needs of vulnerable and minority groups, if any:

The analysis of the socio-demographic and economic picture of the territory outlines the following most vulnerable groups in the territory: children at risk, people with disabilities, including children the elderly, and single people. Most of them are from a minority group of Roma, which, however, is a matter of self-determination so as not to violate the principle of non-discrimination.

Table “Vulnerable groups on the territory of Glavinitsa municipality and Sitovo municipality” up to December 31, 2016 (source of information: District administration – Glavinitsa, District administration – Sitovo)

Vulnerable groups in the territory	Glavinitsa municipality	Sitovo municipality	Total
Elderly and lonely people	95	17	112
People with disabilities, incl. children	1393	694	2087
<i>of them children with disabilities</i>	25	7	32
Children at risk	39	25	64
Total	1552	743	2295

Typical risks for these groups include living in isolated communities; anti-social acts; having many children; unequal position on the labour market; permanent lack of property and income. **Needs:** Based on these characteristics, most of which have socio-economic roots, vulnerable risk groups, and their needs are identified. The priority needs for social protection have been identified, as well as the need for the development of specific social health and educational services within the Strategy for Community-led-local development, take into account the existing plans and programs at the municipal or supra-municipal level. Vulnerable, marginalized, and minority groups are analysed in the context of their needs for social services:

Children at risk

- The offered alternative social services on the territory do not cover the real needs and do not cover all risk groups. Adequate social services are needed for marginalized risk groups, developed following the needs.
- The provision of social services is still a challenge for the territory. Regardless of the possibilities in the legislation, there is no provision of social services in partnership with Non-government organizations that carry out their activities on the territory.
- There is a lack of provided prevention services to support parents and children, for upbringing and education, such as a school for parents, school support, information about their rights and responsibilities, leisure services for children.
- There is a lack of services for children and young people with mental health problems and victims of violence and trafficking.
- There are no services for children with deviant behaviour or at risk of dropping out of school.
- There is a lack of services to prevent the early placement of children in an institution.

People with disabilities

- Institutionalized services predominate. To include new species in the Strategy for

Community led-local development.

Elderly and lonely people

- Services can be improved by expanding staff and activities.

Marginalized and minority groups

On the territory of the two municipalities, there are separate ghettos of Roma who are unemployed, without education and their children do not attend kindergarten and school, or have dropped out due to lack of funds for school supplies and clothes. Some of the dwellings inhabited by Roma families are in poor hygienic and living conditions, which hinders the increase of their socio-economic and health status and is one of the serious obstacles to the overall integration of the Roma community. Unemployment affects people in this group to varying degrees and depends on their education. There is a large number of unemployed Roma who are not registered with the Labour Office and are not looking for work. They mainly rely on social benefits, which leads to social isolation. The health culture is low and there is an increase in infectious diseases.

Taking into account the various factors – external and internal, which affect the social and demographic processes, the **negative trends** in the socio-economic development on the territory can be outlined, which reflect most strongly on **vulnerable and minority groups**: unemployed without specialty and with low education; Early birth; Increasing the number of children from troubled families who find themselves at potential risk at birth; Low health and hygiene culture.

To solve the problems and meet the identified needs of vulnerable marginalized, and minority groups it is necessary:

- To develop services that integrate children and young people from marginalized and minority groups in the educational process, to reduce the share of early school leavers, and to increase the educational status as a sustainable trend;
- To develop services for prevention and support of people and families at risk, to reduce the risk of abandonment of children due to poverty, unemployment, poor living conditions.
- To build a partnership between institutions and Non-government organizations to use their resources to support families in overcoming poverty and social exclusion.
- To identify children, victims of domestic violence, and families with aggressive parental behaviour through kindergartens, schools, and Non-government organizations.
- To use the resources of the educational system and the development of appropriate extracurricular activities for the prevention of aggressive behaviour and early school leaving.
- To support with additional qualification the schools themselves, especially in the small settlements, for extracurricular activities aimed at prevention of aggression.
- Support the development of the capacity of Non-government Organizations to participate in the development and implementation of local policies, through an improved partnership with local authorities.
- To diversify the provision of social services, corresponding to the general specific, but also the individual needs of the vulnerable and minority groups.

There is a significant need to provide services for educational and social integration, as the implementation of such activities, and active work with children from marginalized and minority groups, and with their families, would make a significant contribution to solving the

studied problems

and identified needs. When providing the services, it is necessary to involve teachers, classmates, to encourage the community for tolerance and change of negative stereotypes.

Another priority needs for the territory is **the social and labour integration of people from minority groups in active age by increasing the health and hygiene culture, motivation and work habits, access to health and social service.**

4. Objectives of the strategy:

4.1. Objectives of the strategy and priorities for the development of the territory:

The mission of non-profit association “Local initiative group Glavinitsa – Sitovo – Kraydunavska Dobrudzha”: “Involvement of the local community in the municipalities of Glavinitsa and Sitovo to the LEADER and Community led-local development approach and its activation as a key motor for achieving upward, balanced and sustainable socio-economic development based on local potential and the needs that are best known to local people”.

The vision of the local community: “Territory uniting two neighboring municipalities, overcoming backwardness through profitable and modern agriculture, utilized in primary processing local agricultural products, diverse and competitive economic activities, with a favourable environment for business, employment and income, good quality of life and access to basic public services that meet the modern needs of local people of all ages, ethnicities and social groups”.

To fulfil its mission, the LIG has carried out activities for the initial involvement of local people in the philosophy and principles of the approach, including through the very creation and development of the public-private partnership and the unification of two neighboring municipalities with similar characteristics into one homogeneous territory. TOGETHER they want to turn into a PROSPEROUS KRAYDUNAVSKA DOBRUDZHA. To prepare an applicable and well-founded strategy that meets the real needs and potential, the community is activated in activities that motivate the participants that namely the local people are those who can and should be the engine of development that positive changes are possible if purposeful and decisive actions are performed in the direction determined and desired by all. The local participants are united by the vision and understand that in order to achieve it, the following must be fulfilled:

Strategic objective: Overcoming long-term backwardness and achieving sustainably improving living, business, social, educational, and labour realization through integrated support for socially significant and nosiness projects on the territory for the action of the Local Initiative Group “Glavinitsa – Sitovo – Kraydunavska Dobrudzha“.

The LIG’s Community-led – local development Strategy includes two funds – the European agricultural fund for rural development and the European social fund, developed on the base of *three programs and three development priorities* identified by the local community:

Priority 1: Stimulating entrepreneurship and innovation, increasing the competitiveness of the local economy as a generator of employment and income;

Priority 2: Development of public infrastructure and effective utilization of natural and

cultural-historical resources;

Priority 3: Development of human resources and improvement of education, qualification, and social interactions in the multicultural community for a better quality of life.

The priorities of the territorial development strategy shall be summarized as three main “pillars” of local development in the following shorter way:

1. **The local economy** – a generator of products, services, income, and employment.
2. **Local infrastructure, nature, and culture** – living environment for people of all social and age groups, the environment for entrepreneurship and work.
3. **Local people** – engine and user of creation, developing as individuals, but also as a community in which vulnerable groups to be supported.

The Community led-local development Strategy cannot solve all the problems on the territory, so it is **focused on the three main priorities**, which correspond to the studied needs and potential. Achieving the specific goals of the priorities will be integrated with the policies and plans at local, regional, and national levels. Applying a multi-sectoral approach in coordination provides a chance to achieve a synergistic effect and sustainable results in the most efficient use of resources.

4.2. Specific objectives:

The specific objectives of the Strategy are subordinated to the priorities set by local participants and stakeholders. To achieve these objectives, separate measures are planned for financing project proposals, the implementation of which will contribute to them, and through the implementation of the specific objectives in their connection, the strategic objective is achieved. In the priority area “**LOCAL ECONOMY**”, formulated as **Priority 1: Stimulating entrepreneurship and innovation, increasing the competitiveness of the local economy as a generator of employment and income**, two specific objectives have been identified, corresponding to the characteristics and potential of the territory and the needs and attitudes stated by the participants and stakeholders: **Specific objective 1: Promoting the production and processing of quality local agricultural products; Specific objective 2: Development, technological modernization, and diversification of non-agricultural activities; improving the working environment.**

The two specific objectives correspond to the structure of the local economy – agricultural and non-agricultural activities. In the field of agricultural activities, which are traditional for the development of the region, the objective is related to the identified need for investments aimed at modernization of agricultural machinery and technologies, the introduction of environmentally friendly and organic production, adding market value by processing the extracted agricultural raw materials into quality local products.

The following measures are planned to achieve specific objective 1: **Measure 4.1. Investments in farms and Sub-measure 4.1.2. Investments in farms under Thematic sub-program for the development of small farms.** (*From measure 4 „Investments in tangible assets “of the Rural Development Program for the period 2014-2020*), as well as and **Measure 4.2.**

Investments in processing/marketing of agricultural products (from measure 4 “Investment in tangible assets” of the Rural Development Program for the period 2014-2020). The choice of measure 4.1 and sub-measure 4.1.2 in the Strategy for Community led-local development is determined by the presence of differences in size and economic volume of agricultural holdings in the territory some of which are small farms of most individuals, registered as agricultural producers, and another part –

cooperatives and agricultural producers registered under the Commercial Law, which develop agricultural activities on a larger scale and economic volumes of production. Outside agriculture, the local participants have expressed interest and are planning investments in non-agricultural activities – production and services to be modernized technologically, to expand and diversify, as well as innovative business projects.

To achieve a **specific objective 2 Development, technological modernization, and diversification of non-agricultural activities; improvement of the work environment** the following measures have been selected for Priority 1: **Measure 6.4. Investment support for non-agricultural activities** (from measure 6 „Development of farms and enterprises” of the Rural Development Program for the period 2014-2020); **Measure 1.7. Adapting workers and entrepreneurs to change, introducing social and non-technological innovations in enterprises.** (Measure from Operational Program Human Resources Development, Priority axis 1, Investment Priority 7). The measure is aimed at achieving Specific Objective 2 of Priority 1 but also contributes to Specific Objective 1 of Priority 1, as well as to the achievement of Specific Objective 1 of Priority 3 of the Strategy for Community-led local development. Measure 1.7 is planned as a horizontal measure, which is integrated into the achievement of the two specific objectives of Priority 1, but also the objectives of Priority 3, focused on human resources in the face of local people living and working in the territory.

The planned financial resource for achieving the specific objectives under Priority 1 is allocated for three measures of the Rural Development program (4.1., 4.1.2., 4.2) and one measure of Operational Program Human Resources Development (1.7).

Under **Priority 2. Development of the public infrastructure and effective utilization of the natural and cultural-historical resources**, derived from the second thematic “pillar” of the strategy – “**LOCAL INFRASTRUCTURE, NATURE, AND CULTURE**”, three specific objectives are formulated, which will be achieved through the implementation of projects under the relevant measures: **Specific objective 1: Creation, expansion, and improvement of small-scale public infrastructure.** The objective will be achieved through the implementation of **Measure 7.2 Investments in the creation, improvement, or expansion of all types of small-scale infrastructure** (from measure 7 “Basic services and renewal of villages in rural areas” of Rural Development Program for the period 2014-2020). In this thematic area is also **Specific Objective 2: Construction and creation of conditions for public use of infrastructure for recreation and tourism**, for the achievement of which projects under **Measure 7.5. Investments for public use in recreation infrastructure, tourist information, and small – scale tourist infrastructure** (from measure 7 “Basic services and renewal of villages in rural areas” of the Rural Development Program for the period 2014-2020) will be implemented. **Specific objective**

3: Effective utilization of natural resources, tangible and intangible cultural, historical and rural heritage, complements the other two objectives by including the unrealized potential of rural heritage and nature in the innovative **Measure 19.05.: Exploration, preservation, and utilization of natural resources and cultural heritage on the territory of the municipalities Glavinitsa and Sitovo** (*measure outside the Rural Development Program 2014-2020 and Regulation 1305, but meeting the objectives of the Rural Development Program and the Regulation*). Measure 19.05. of the

Strategy integrates and contributes to the achievement of Specific Objective 2 under the Priority 2, as well as to the achievement of Specific Objective 1 under Priority 3, as it will simultaneously fill with content the infrastructure for recreation and local tourism with content and will contribute to revitalization, a better quality of life and a new type of social interactions on the territory. The hierarchical connections and integrity between priorities, objectives, and measures are presented in item 4.5. **Priority 3** refers to the thematic “pillar”, called for short **“LOCAL PEOPLE“** and focuses on human resources in the territory, and under its three specific objectives and planned measures of

operational programs funded by the European Social Fund – Operational Program Human Resources Development and Operational Program Science and education for Smart Growth. **Priority 3: Development of human resources and improvement of education, qualifications, and social interactions in the multicultural community for a better quality of life.** To this priority are set 3 specific objectives, for the achievement of which one measure is planned, and as an accompanying sub-measure 19.4, because of opportunities, it provides to the LIG for active work with the community, local capacity building and partnership with institutions, organizations, and companies. **Specific objective 1: Educational and social integration of children and youth from marginalized groups.** One measure is planned for the achievement of Specific Objective 1: **Measure 3.9 “I’m learning to succeed“.** *The measure was selected by Operational Program Science and Education for Smart Growth, priority axis 3 “Educational environment for active social inclusion”, Investment priority 9.ii “Socio-economic integration of marginalized communities, such as the Roma”.* To achieve the synergistic effect is parallel with measure 3.9 under Specific Objective 1, has been formulated and **Specific Objective 2: Poverty reduction, support for social inclusion and a better quality of life for vulnerable and minority groups.** To implement Specific Objective 2, in compliance with the demarcation between Operational programs, the following will be applied: **Measure 2.1. Social – labour and health integration.** (*Under Operative Program Human Resources Development, Priority axis 2, investment priority 1, with a specific objective of Project 1: “Increasing the number of persons from vulnerable ethnic communities involved in employment, education, training, social and health services with a focus on Roma, migrants, participants with origin from other countries.”*). The focus of measure 2.1. is to target groups that are related to the target group of children and youth from marginalized (minority) groups in the territory, included in measure 3.9 but the potential users are different in terms of age - adults, representatives of vulnerable and minority groups, in active and/or working age. Services for the target groups under measure 2.1 differ both in type and in a location: they will be provided outside the environment of educational institutions – schools and kindergartens. *The demarcation between the two programs - Operational Program Science and education for*

Smart Growth and Operational Program Human Resource Development and the measures 3.9 and 2.1 is in line with the composition of the target groups, the activities, and the location for their implementation. Specific objective 3 “Activating the local community and increasing the capacity to implement projects and policies in partnership” is an additional, but not insignificant goal of Priority 3, which should achieve the unification of the efforts of local actors in socio-economic life in a continuous process of capacity building through new knowledge, skills, and partnerships. Measure 3.9 of the Operational program Science and education for Smart Growth and measure 2.1 from Operational Program Human Resources Development have a main contribution to this objective,

which are directly aimed at achieving Specific Objective 1 and Specific Objective 2 of Priority 3. For this purpose, *Sub-measure 19.4 “Current expenses and promotion of the strategy for Community-led local development” of Measure 19.* Community led-local development of the Rural Development Program 2014-2020, through its connection with sub-measure 19.2. In terms of strategy, the measure is complementary. The LIG implements it only under the conditions of an approved strategy for implementation and concluded Agreement with the Management Authority of the programs, from which measures have been selected for beneficiaries of Strategy for Community led-local development. The activities from sub-measure 19.4 provide the LIG with an opportunity, but also an obligation, to work to promote the strategy and to increase the capacity of the local community. It is in this context that the measure is taken into account when drawing up a strategy, although it is not an essential part of it. The LIG will play a leading role in achieving Specific Objective 3 of Priority 3. This objective is also related to the need to implement an aggressive strategy, leading to overcoming negative stereotypes and achieving the objectives.

4.3. Connection between the Community-led local development strategy and the characteristics of the specific territory, developed based on local needs and potential, following the policies at the national, regional, and local level, including the policies on desegregation and deinstitutionalization:

The development of the Community led-local Strategy attaches new importance to the opportunities for overcoming internal and inter-municipal differences by improving the territory, providing access to infrastructure, employment, and services, as well as for a positive impact on the target groups. Awareness, explanations, and training about the approach as an important tool for local development, led by the community, determine the compliance of the planned goals and measures in Strategy for Community led-local development with the characteristics of the LIG territory, the identified potential, and the studied needs. With the participation of stakeholders and community representatives, the priority needs to overcome backwardness and negative trends through investment support for the business sector, improving the living and working environment, renewal and development of infrastructure, increasing access to employment and services, support for the different target groups according to their specific needs, achieving activity and coordination for local initiatives. The collected and synthesized data from the survey among the local population on the involvement, attitudes, and readiness of stakeholders in the future implementation of the Community led-local development Strategy on the territory of the LIG, show **INVESTMENT AND ACTIVITY NEEDS** related to:

- development of non-agricultural activities, incl. new products and services;

- development and modernization of agricultural farms;
- creation, improvement, or expansion of small-scale infrastructure;
- processing and/or marketing of agricultural products;
- creation of tourist infrastructure for recreation and public use;
- improving the quality of jobs and working conditions;
- raising the entrepreneurial culture for work organization, processes, human resources management, including through non-technological innovation;
- social integration of people, children, and families at risk of poverty and social exclusion, especially representatives of marginalized Roma communities, etc. vulnerable groups.

THE POTENTIAL OF THE TERRITORY OF THE LIG, which is expressed in the traditional agriculture, ecological characteristics and areas of high natural value, underutilized rural heritage, high motivation of human resources for new economic and social activities to lead to a better quality of life, *compared with the REQUIRED NEEDS BY THE LOCAL PARTICIPANTS, and combined with the established ATTITUDES AND PROJECT INTENTIONS OF THE INTERESTED PARTIES, leads to the conclusion*, that:

- On the territory of LIG Glavinitsa-Sitovo Kraydunavska Dobrudja various local agricultural economic activities and the processing of agricultural products, development of productions in the agricultural holdings by traditional or ecological technology should be encouraged;
expansion and diversification of non-agricultural activities, improvement of employment conditions and social integration of human resources, with emphasis on vulnerable and minority groups. The data obtained in the studies and analyses also reveal the need for development, improvement, or expansion of the municipal infrastructure, which would lead to social inclusion, improvement of the living environment, more opportunities for public and environmentally friendly use of tourist infrastructure and infrastructure for recreation in nature, and realization of various activities on interests related to free time.
- Concerning vulnerable and minority groups in the territory, the most significant in the studies is the need to provide services for prevention against early school leaving, such as the implementation of such activities and active work with children from marginalized and minority groups, and with their families, would make a significant contribution to solving the problems and needs in other areas of local life. Another priority need is the social integration of people from minority groups who are of active age, incl. by increasing their health and hygiene culture, motivation and work habits, health, and social services.

Following **these needs**, in the development of the LIG's Strategy for Community led-local development, **social inclusion is introduced as a horizontal approach**, which, together with the positive impact in the social spheres identified as the highest priority, to ensure balance in development and integrity between the priorities of the LIG. Strategy for Community led-local development to achieve its strategic goal. The “social measures” included in the strategy from Operational Program Human Resources Development and Operational Program Science and education for Smart Growth are selected to diversify the activities at the local level by complementing the projects under priority axes and OPHRD operations at the national level, for which the municipalities and others. Eligible beneficiaries from the territory apply or implement

projects, meeting both the needs and the target groups, according to the declared interest.

Measures 3.9 from Operational Program Science and Education for Smart Growth and 2.1. from Operational Program Human Resources Development are also in line with the policies of desegregation and deinstitutionalization at the national level, such as the Framework Program for Roma Integration in Bulgarian Society (2010-2020); National Strategy for Poverty Reduction and Promotion of Social Inclusion 2020; Strategy for reducing the share of early school leavers (2013-2020). They are in accordance not only with the objectives of the respective operational programs that will finance them but also with the municipal plans and strategies of Glavinitsa and Sitovo: Municipal Action Plans for implementation of integration policies 2014-2020, as well as the

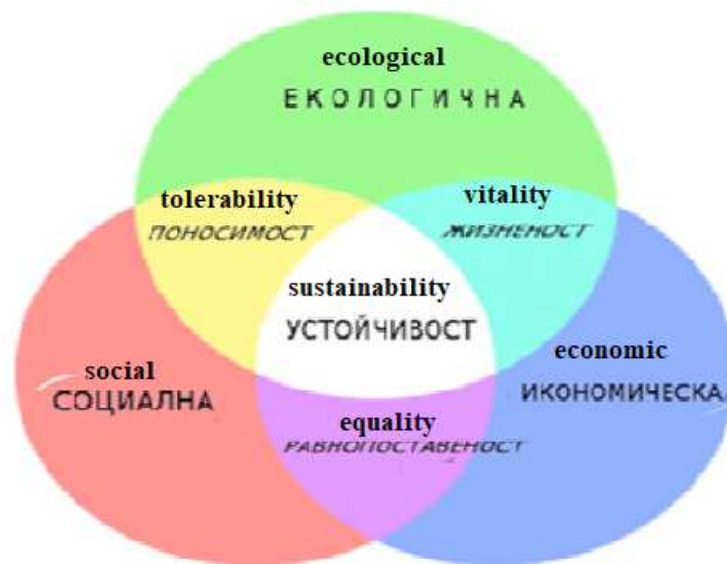
strategies of both municipalities for the development of social activities 2014-2020. **The chosen approach**, which meets the specific needs of the territory and the eligibility of the studied regulations, **is the preparation of a multi-fund strategy with funding from two European funds** – European Agricultural Fund for Rural Development, which finances the Rural Development Program 2014-2020 and the European Social Fund, supporting in the period 2014-2020 Operation Program Science and Education for Smart Growth and Operational Program Human Resources Development. The implementation of the measures will increase the satisfaction of the local community by providing quality and a wide range of services that meet the needs.

The coherence of the Community-Led Local Development Strategy with other strategies, plans, and programs:

The goals and priorities of the strategy, as well as the measures included in it, will contribute to achieving the goals of plans and programs at the national, regional, and municipal level, which implement the European goals and values for the period 2010-2020, such as "National Bulgaria 2020 Development Program aimed at ensuring balanced socio-economic development in Bulgaria while accelerating economic growth and rising living standards in the long run. Other programs with which Strategy for Community led-local development is in line with the goals and priorities are: National Reform Program in implementation of the Europe 2020 strategy; National Strategy for Promotion of Small and Medium Enterprises 2014-2020; Action Plan "Entrepreneurship 2020 - Bulgaria"; National Program for Sustainable Land Management and Combating Desertification "; Concept for better healthcare; The updated national strategy for demographic development of the population (2012-2030); Action Plan for the period 2015-2016 for implementation of the National Strategy for Poverty Reduction and Promotion of Social Inclusion 2020; The updated employment strategy 2013-2020; The strategy is in accordance with the thematic connection with local plans and programs for the same period, developed for the territory of Silistra District, as well as the specific plans for the territory of the LIG: Municipal Development Plan of Glavinitsa Municipality for the period 2014-2020, Municipal Plan for Development of the Municipality of Sitovo for the period 2014-2020. With one or more of the objectives of these program and planning documents, the Strategy of **“LIG Glavinitsa-Sitovo Kraydunavska Dobrudzha” achieves, while applying the horizontal principle of the EU for sustainable development, compliance with the line of:**

LOC
Competitiv New mark income

RCES
th and full



4.4. Description of the innovative features of the strategy:

The implementation of the Community Led Local Development approach and the planning of a multi-fund strategy is new for the territory, offering methods for an integrated solution of local problems of the community united by the LIG partnership, and including representatives of the public, private and civil sector. The innovation process as a form of government presupposes the existence of an innovation strategy in line with globalization and modern models for technology transfer and knowledge distribution. Strategy-Led Local Development is implemented at the local level and is an appropriate tool for perceiving the value of training and experience, comparing it with "best practices" and taking improvement actions to create "knowledge of innovation" and "innovation activity". In line with the "technology-knowledge" relationship, the strategy combines investments in tangible assets with the development of human resources in the territory.

The choice of "**INVESTMENT APPROACH**" gives a new direction of development of the territory. The survey of stakeholder attitudes revealed a high relative share (**34%**) of **stated needs of the business sector** and (**65%**) of **the non-profit sector** of self-employment, entrepreneurship, and **business creation, incl. innovative**, as well as the readiness of some of the respondents to create and develop their own **innovation culture**, gaining knowledge about it and "importing" external innovation experience.

The Community led-local development strategy is an **INNOVATIVE TARGETING TOOL FOR SOLVING LOCAL PROBLEMS AND OVERCOMING THE WEAKNESSES OF THE TERRITORY**. The inclusion in the strategy of goals and measures for utilization of unused or partially used potential of the territory from local resources – agricultural products, natural resources, and favourable climatic and ecological conditions, cultural and rural heritage, human potential, enriched with new knowledge and skills, provide opportunities for new forms of their use, as well as for the creation of new services and products. At the project level, the strategy sets prerequisites for the **introduction of major types of innovation: product, process, marketing, organizational**. In preparing the strategy **both top-down innovation approaches** have been applied – in the process of informing and providing expert assistance, and "**bottom-up**" in consulting the community.

TECHNOLOGICAL AND NON-TECHNOLOGICAL INNOVATIONS are promoted through the support for projects under the measures included in the Strategy for Community led-local development. The first are subject to investment measures of the Rural Development Program, aimed at agricultural activities, processing of agricultural products and economic activities outside agriculture and processing of its products - measures 4.1, 4.1., 2, 4.2, 6.4. The material expression of the technological innovations will be the acquired material assets - machines, machinery, and equipment in the agricultural holdings, enterprises, and companies, which have better energy and ecological indicators at a simultaneous lower consumption of resources, incl. time, human, labour, material, financial. Through Strategy for Community-led-local development priority will be given to support the economic sector, which is the bearer of economic development, and through the evaluation criteria priority is given to projects, including innovative equipment, technologies, processes, products. Innovations will also be introduced in the implementation of public projects. The stated aspiration of the community is to apply experience and good practices from other regions of the country and the EU in the expansion and diversification of the infrastructure for public use.

Non-technological innovations within Strategy for Community led-local development refer to new knowledge, a new type of organizational and social approaches and activities that have not been applied on the territory in the implemented mostly municipal projects funded by Operational Program Human Resources Development (for social services) and Rural Development Program (municipal infrastructure). The planned measures for activities on the territory of educational institutions (3.9) and in the community (2.1) are of a completely new type for the territory and aim not only to have a direct impact on the target groups involved in project activities, but also to achieve correct and sustainable social interactions between representatives of different social, ethnic, age, and other groups in the multicultural environment of the territory to improve the quality of life-based on new knowledge and skills. Non-technological innovations will be introduced through the new ways, methods, and forms for research, preservation, and promotion of rural heritage in its tangible and intangible forms, which implies expert assistance in the relevant field (new knowledge). The implementation of the Strategy for Community led-local development will activate the non-profit sector as a carrier of new ideas. This type of innovation within the strategy can be summarized in the thematic group **SOCIAL INNOVATION**. **Non-technological innovations in terms of local entrepreneurship and business** will play an important role in the implementation of the Strategy for Community led-local development. The projects will introduce new management and organizational approaches, systems for improving the structure and organization of labour, new models in production processes, better working conditions, and quality of jobs. Entrepreneurs will be introduced to successful marketing practices and innovative approaches such as “cluster approach”, “producer groups”, “short food supply chains”. Innovative projects will be monitored and reported through indicators.

The innovative features of the Strategy for Community led-local development are in line with the complementary priorities of the Europe 2020 Strategy: „Smart Growth based on knowledge and innovation; Sustainable growth, promoting a resource-efficient, green and competitive economy; Inclusive growth, promoting a high-employment economy, ensuring economic, social and territorial cohesion“.

4.5. The hierarchy of objectives – including objectives for end products or results:

Strategic objective:

Overcoming long-term backwardness and achieving sustainably improving living conditions, economic activity, social, educational and labor realization through integrated support for public and business projects on the territory of action of the LIG “Glavinitsa Sitovo Kraydunavska Dobrudzha”

МАЖА ПО

Priority 1:
Stimulating entrepreneurship, innovation, increasing the competitiveness of the local economy as a generator of employment and income

Priority 2:
Development of the public infrastructure and effective utilization of the natural and cultural – historical resources

Priority 3:
Development of human resources and improvement of education, qualification and social interactions in the multicultural environment

Specific Objective 1: Promoting the production and processing of quality, local, agricultural products

Specific Objectives 2: Development technological modernization and diversification of non-agricultural activities, improving the working environment

Specific Objective 1: Creation, expansion and improvement of small-scale public infrastructure

Specific Objective 2: Construction and creation of conditions for public use of infrastructure for recreation and tourism

Specific Objective 3: Effective utilization of natural resource, tangible and intangible cultural–historical and rural heritage

Specific target 1: Educational and social integration of children and young people from marginalized communities

Specific target 2: Poverty reduction, social inclusion and a better quality of life for vulnerable and minority groups

Specific target 3: Activated the local community and increase the capacity to implement projects and policies in partnership

Measure 4.1

Measure 4.2.

Measure 5.4

Measure 7.2

Measure 7.5

Measure 19.05

Measure 3.9

Measure 2.1

Measure 19.4

Measure 4.1.2.

Measure 1.7

Measure – code and description Targets for final products and results Summarized Distribution by measures	RDP Measure 4.1 Investments in farms	RDP Sub-measure 4.1.2 Investments in farms under the thematic sub-program for development of small farms	RDP Measure 4.2. Investments in processing/marketing of agricultural products	RDP Measure 5.4. Investment support for non-agriculture activities	RDP Measure 7.2 Investments in creating, improving, and expanding all types of small-scale structure	RDP Measure 7.5. Investments for public use and recreation infrastructure, tourist infrastructure	EAFRD Measure 19.05 Research, preservation, and utilization of natural resources and cultural heritage on the territory of the municipalities Glavinitsa and Sitovo	OPHRD Measure 1.7 Adaptation of workers and entrepreneurs to change, the introduction of social non-technological innovations in enterprises	OPHRD Measure 2.1. Social – labor and health integration	OPECSG 3.9 I learn to succeed
The targets for final products and results are derived from the indicators by measures and the general indicators for their visual presentation to the Hierarchy of objectives as distributed by measures and programs										
Total number of projects, supported under SCLLD - 55	6	12	2	6	8	2	8	4	3	4
Public aid in BGN – 3 442230	330 500	201 500	205 000	294 000	550 000	117 350	145 450	459 400	430 280	585 750
Number of innovative projects - 15	2		1	2		1	4	2	1	2
Projects for agriculture - 18	5	12								
Projects for social integration - 9								2	3	4
Number of jobs created	10	8	8	10					5	
Number of jobs with improved working conditions - 30								30		
Projects for technical and social infrastructure - 4					4					
Projects for public tourist infrastructure - 2						2				
Projects in	5	10	1	2	2	1	3		2	3

villages of the territory - 29										
Children and young people integrated into the education system - 85									80	
Integrated into the labor market inactive and unemployed - 70									70	
Project for utilization of natural – cultural heritage - 5							5			

5. Measures' description:

Measures and activities for each of the funds separately:

GENERAL CONDITIONS FOR ALL MEASURES AND DEMARCATION BETWEEN PROGRAMS

Following the Guidelines for determining the conditions for application and the conditions for the implementation of the approved strategies for community-led local development

ELIGIBLE RECIPIENTS / BENEFICIARIES OF THE STRATEGY FOR COMMUNITY-LED LOCAL DEVELOPMENT OF LIG:

(1) The applicant / beneficent of financial support has a permanent address – for individuals, and a registered office and address of management – for sole traders and legal entities, in the territory of the LIG and carries out project activities in the territory of the LIG. (*in this case – the entire territory of the municipalities of Glavinitsa and Sitovo*)

(2) A branch of legal entity or a sole trader shall not be an eligible recipient of financial support if the legal entity or the sole trader who opened the branch does not meet the requirements for registered office and implementation of the activities on the territory of the LIG.

(3) An eligible applicant/beneficiary and/or his / her legal or authorized representative who does not meet the conditions set out in:

1. paragraphs 1-18 of the section “Eligible applicants” of these guidelines, except for item 1 for individuals and municipalities (for projects financed by the EAFRD);
2. the instructions under § 3 of the final provisions of Decree of the Council of Ministers No. 161 for the general requirements to the strategies, which will be financed under the respective programs under Art. 2, para. 2, including the specific objectives of the program to which the measures will contribute the eligible beneficiaries, and the eligible activities, the categories of eligible costs.

ELIGIBLE COSTS:

Eligible project costs to Community-led local development strategies are:

1. Investment costs under Art. 45 of Regulation (EC) No. 1305/2013;
2. other eligible costs related to the implementation of operations under Regulation (EC) No. 1305/2013 and the priorities of the Community-Led Local Development strategy;
3. Defined in Decree No. 189 of the Council of Ministers of 2016 for determining national rules for eligibility of expenditures under the programs co-financed by the European Structural and Investment Funds for the programming period 2014 - 2020 (promulgated, SG No. 61). 2016), hereinafter "Decree of the Council of Ministers No. 189"
4. Defined as eligible costs in the instructions for the general requirements to the strategies, which will be financed under the respective programs, prepared following § 3 of Decree No. 161.

To be eligible for EAFRD assistance, investment operations shall be preceded by an assessment of the need to assess the expected environmental impact and, where necessary, of an assessment of the expected environmental impact. Simplified costs may apply where they are intended to be used by the relevant measures under the programs included in the Community-Led Local Development approach or in the project selection guidelines of the respective programs.

The maximum amount of eligible costs for a project to a Community-Led Local Development strategy financed by the EAFRD is up to the BGN equivalent of EUR

200,000.

The maximum amount of financial assistance and the intensity of support in percentages are following the financial parameters and conditions of each specific measure. The BGN equivalent for RDP/EAFRD projects is estimated at BGN – 1.9558 per EUR 1.00.

INELIGIBLE COSTS:

(1) Financing of expenses is not eligible:

1. determined as inadmissible in the Council of Ministers No. 189 of 2016;
2. for investment or activity, received financing from another European Structural and Investment Funds;
3. for the acquisition of trucks for land transport according to art. 3, items 2 and 3, as well as others for which restrictions are specified in Commission Regulation No. 1407/2013 of 18.12.2013 on the application of Articles 107 and 108 of the Treaty on the Functioning of the European Union to de minimis aid (OJ, L352 / 1 of 24.12.2013);
4. determined as inadmissible in the instructions under § 3 of the Final Provisions of the Council of Ministers No. 161 for the general requirements to the strategies, which will be financed under the respective programs.

(2) From the Community-Led Local Development strategy, expenditures are not eligible for EAFRD financing:

1. For interest on debts;
2. for the purchase of undeveloped and built-up lands with a market value over 10 percent of the total eligible costs for the respective operation;
3. (revoked - SG 69/17, in force from 25.08.2017);;
4. for simple replacement and maintenance;
5. or interest and commissions, the profit of the leasing company, interest expenses for refinancing, operating and insurance expenses under a leasing contract;
6. for a lease other than a financial lease, in which the recipient of the aid becomes the owner of the respective asset not later than the date of submission of a request for interim or final payment for the same asset;
7. for overheads;
8. for insurance;
9. for purchase of second-hand equipment;
10. committed before 1st January 2014;
11. for contribution in kind;
12. for investments in agriculture - purchase of production and payment rights, purchase of animals, purchase of annual plants and their planting;
13. for an investment for which it has been established that it will harm the environment;
14. made before the submission of the project proposal, regardless of whether all related payments have been made, except for the costs for feasibility studies, fees, remuneration of architects, engineers, and consulting services made after 1st January 2014;
15. for construction and installation works and creation of permanent plantations, carried out

before a site visit by the LIG;

16. exceeding the ones determined by the order of art. 41 of the Council of Ministers No. 189 reference costs;

17. defined in the measures of the RDP 2014 - 2020, other than those specified in items 1 - 15.

(3) No financial assistance shall be provided for a project financed in full or in part by the EAFRD for

the purchase of transport, including vehicles, except when they are eligible for financing following the regulations on implementation of the relevant measures/sub-measures of RDP 2014-2020 for investment purposes.

(4) No financial assistance shall be provided for construction and renovation of accommodation establishments with more than 20 accommodation premises and value of the financial assistance over BGN 50,000 including VAT under a project financed in whole or in part by the EAFRD or the requirements of art. 79, para. 2.

The financial assistance shall be paid after the implementation of the project activities.

Financial assistance is not paid for the costs of construction and renovation of accommodation, because of the project activities:

1. no website has been created and is not functioning for the site, which provides an opportunity for online reservations;
2. the website does not contain up-to-date information about the premises and the amenities in them, including photo material;
3. no price for accommodation for a respective period is indicated;
4. no link is available on the website under item 1 in the website of the LIG and on a specialized tourist site.

INTENSITY OF FINANCIAL AID FOR A MEASURE FUNDED FULLY OR PARTIALLY BY THE EAFRD:

1. which is included in the Rural Development Program 2014-2020 or is part of Regulation (EC) No. 1305/2013 of the European Parliament and of the Council of 17th December 2013 on support for rural development by the European Agricultural Fund for rural development (EAFRD) and repealing Council Regulation (EC) No. 1698/2005 (OB L 347/487 from 2013), hereinafter referred to as "Regulation (EU) No. 1305/2013", may not exceed the intensity specified for the relevant measure in the Regulation;

2. which is not included in the RDP 2014-2020 and is not part of Regulation (EC) No. 1305/2013, shall amount to:

a) up to 100 percent - when a recipient is a public person, community centre, or non-profit legal entity and the project does not generate revenue according to the Cost-Benefit Analysis (financial analysis), prepared following the rules set out in Delegated Regulation (EU) No. 480 / 2014 of the Commission of 3rd March 2014, and the guidelines of the European Commission of December 2014 for the preparation of a Cost-Benefit Analysis of investment projects;

b) up to 70% - when the recipient is a public entity and the project generates revenue according to the submitted 'Cost-benefit analysis (financial analysis), prepared following the

rules laid down in Commission Delegated Regulation (EU) (480/2014 of 3 March 2014, and the guidelines of the European Commission from December 2014 for the preparation of a Cost-Benefit Analysis of investment projects;

c) up to 60 percent – when a recipient is a private person;

d) up to 70 percent – when a recipient is a private person and the project is for public benefit.

THE INTENSITY OF THE AID FOR A PROJECT FINANCED BY A FUND OTHER THAN THE EAFRD IS DETERMINED IN THE INSTRUCTIONS UNDER § 3 OF THE FINAL

PROVISIONS OF THE DECISION OF THE COUNCIL No.161 FOR THE GENERAL REQUIREMENTS FOR THE COMMUNITY-LED LOCAL DEVELOPMENT STRATEGIES OF THE RELEVANT PROGRAM.

DEMARCATIION AND ADDITIONALITY BETWEEN THE CERTAIN MEASURES OF STRATEGY FOR COMMUNITY-LED LOCAL DEVELOPMENT

Demarcation and complementarity between OPHRD and OPSESG:

Under Operational Program Human Resources Development, only training for economically inactive, unemployed, and employed persons carried out outside the system of formal education will be supported, while under Operational Program Science and education for Smart Growth – within formal education. Adult literacy, as part of formal education, is within the scope of OPSESG but is not included in the Community-Led Local Development approach.

The Human Resources Development Operational Program will support the provision of services for an easier transition from education to employment of young people, when they are provided by organizations outside the system of secondary and higher education.

Operational Program Science and education for Smart Growth will support project activities of eligible applicants, carried out within the educational process and the accompanying additional activities in educational institutions. The HRD OP supports activities that provide a “social package” for marginalized target groups and beyond, which are outside the scope of the educational process and the accompanying additional activities in the education system. The demarcation of the activities is necessary for each beneficiary and each project according to the requirements of both programs.

In the strategy, under OPHRD through measure 2.1. “Social-health and labour integration” will support activities in three areas “Improving access to employment”, “Access to social and health services” and “Development of local communities and overcoming negative stereotypes”, without the direction “Improving access to education”.

Demarcation and complementarity between RDP and HRD OP: Under measure 7.2. from the RDP are eligible investments for construction, reconstruction, repair, equipment of social municipal infrastructure for services outside the process of deinstitutionalization of children or adults. Such activities are not financed through OPSESG. OPHRD can finance the provision of services in the renewed social infrastructure.

For the measures of RDP 4.1., 4.1.2, 4.2, and 6.4, which are included in the Strategy for Community-led local development and aimed at the economic sector of the territory, the costs for investments in tangible assets in agricultural holdings, processing enterprises, and micro-enterprises in the field of non-agricultural activities are eligible, production and services. These

are the costs for buildings, machinery, equipment, agricultural machinery, and attachments. Measure 1.7. The HRD OP is also intended to be implemented on the territory of enterprises but is aimed at the organization, processes, and structure of work, to increase the entrepreneurial culture, improve working conditions of workers and the quality of jobs, the adaptability of human resources to the changes. The measures from the RDP and the HRD OP have a different scope of activities and costs, they do not overlap but complement and integrate to achieve a more comprehensive result for the local economy.

Training under the RDP can be provided only for persons engaged in the agriculture and forestry sector, but such a measure is not included in the strategy. The following can be financed under the HRD

OP: (1) vocational training in these areas for unemployed persons; (2) other types of professional training, as well as training for acquisition of key competencies of persons employed in the indicated sectors.

Employment and support for enterprises - under the HRD OP are eligible for financing support measures, incl. subsidizing wages related to encouraging employers to hire people. RDP measures do not include such activities.

Demarcation and complementarity between Operational Program Science and education for Smart Growth and RDP: Under measure 7.2. of the RDP are eligible investments for reconstruction, repair, equipment, and/or furnishing of the municipal educational infrastructure of local importance in rural areas.

Services that are part of the educational process in kindergartens and schools, incl. prevention of dropping out of school, etc., will be supported under OP SESG, through measure 3.9. "I'm learning to succeed". The demarcation between the two programs OP SESG and OP HRD, which finance measures 3.9 and 2.1., is in line with the composition of the target groups, the type of activities, and the location for their implementation. The application of the two measures on the territory achieves a synergistic effect of impact through complementarity.

*In the strategy, the measures are presented with their goals and scope, the eligible recipients of financial aid; eligible applicants, activities, and costs; the minimum and maximum size of the projects as a value; the intensity of the grant in percentages; the criteria for evaluation and selection of project proposals. Due to the dynamics of amendment and supplementation of the indicated normative documents, when preparing a project proposal, the applicants fully comply with the Guidelines for application of the respective measure and the annexes that the LIG prepares in the Information System for Management and Monitoring for the specific procedure for accepting project proposals under the Community-Led Local Development Strategy. **The planned deadline for implementation of project activities to the strategy for Community-Led Local Development is up to 30th June 2023***

RDP 2014 - 2020 (EAFRD)

MEASURE 4.1. "INVESTMENT IN FARMS"/RDP (EAFRD) Measure code: 4.1 Name of the measure: "Investment in farms"

Description of the objectives and scope of the measure: Measure 4.1 of the Strategy for Community-led local development aims to support local projects that lead to: improving the

overall activity of the agricultural holding, increasing the competitiveness of agriculture as a traditional industry on the territory of the LIG; better utilization of the natural-geographical potential, improvement of the efficiency and conditions for agricultural activity through:

- supporting new productions related to innovation;
- support for agricultural holdings in sensitive sectors - "dairy farming", "fruits and vegetables", "essential oils and medicinal crops", and providing employment;

Eligible recipients of financial assistance under the measure are:

1. Farmers for investments in their holdings, directly related to one or several of the activities for primary agricultural production and storage of only their agricultural products*, as well as preparation of the production for sale; recognized groups or producer organizations for investments which benefit the whole group or producer organization and are related to the main agricultural activity of production and/or storage of agricultural products produced by their members, as well as to the preparation of products for sale.

**Agricultural products may only be products covered by Annex No. I under Article 38 of the Treaty on the Functioning of the European Union and cotton, except for tobacco, fish, and aquaculture. Financial assistance shall be granted only if the product is cotton or agricultural products falling within the scope of Annex No. I under Article 38 of the Treaty on the Functioning of the European Union, except for tobacco, fish, and aquaculture.*

Eligible applicants for the measure are:

1. Farmers; 2. Recognized producer groups and recognized organizations of producers of agricultural products or those approved for financial assistance under Measure 9 "Establishment of groups and producer organizations" of the RDP 2014-2020. For support (only for collective investment projects) can apply legally persons registered under the Commercial Law and/or the Cooperatives Act, which include at least 6 persons, other than those specified in paragraph 1, who meet the conditions:

– Applicants must have a **registered office** or **permanent address** for individuals in **the municipality of Glavinitsa or Sitovo**;

– Applicants should submit a business plan (according to a sample, appendix to the Guidelines for applying for the measure), proving the improvement of the activity of the Insurance Act by applying the planned investments and activities. The Business Plan contains a detailed description of the planned investments and activities for 5 years and in the case of investments for the creation of permanent crops or construction and installation works – for 10 years.

– The eligibility criteria for a minimum standard production volume of EUR 8000 and proof of income from the agricultural activity for legal entities do not apply to applicants with projects in rural areas established up to 1 year before applying for projects with investments in: livestock sector, the sector "fruits and vegetables", production of "essential oil and medicinal crops" and production of technical crops.

– Farmers under item 1 as of the date of submission of the application for support must meet the following conditions:

1. to be registered as farmers according to art. 7, para. 1 of the Law for support of the agricultural producers ON THE TERRITORY OF THE LIG;

2. the minimum standard production volume (SPV) of their agricultural holding is not less than

the BGN equivalent of 8000 euro;

3. If they are legal entities, they must have: a) received for the previous or current financial year income from agricultural activities or participation and support under the single area payment scheme, including income from received public financial aid directly related to the implementation of these activities, or income from the processing of agricultural products or services directly related to agricultural activities, or public financial assistance received; b) registered under the Commercial Law, the Cooperatives Act.

Applicants who meet the following conditions are supported:

1. have no due and liquid liabilities to the State Fund "Agriculture";
2. have no other required public obligations to the state;
3. are not in open bankruptcy proceedings or are not declared bankrupt;
4. are not in liquidation procedure.

The requirements under items 3 and 4 do not apply to applicants natural persons and candidates registered under the Religions Act, and under item 4 – to applicants sole traders.

Eligible activities and costs:

Eligible are projects with activities included in them, which lead to the improvement of the overall activity of the agricultural holding through:

1. Implementation of new products, processes, and technologies and renewal of the available production tangible and/or intangible assets; and/or
2. promotion of the cooperation with the producers and processors of agricultural products; and/or
3. protection of the components of the environment, including by reduction of the harmful emissions and waste; and/or
4. increase of the energy efficiency in the agricultural holdings; and/or
5. improvement of the working conditions, improvement of the hygienic, veterinary, phytosanitary, ecological and other conditions of production; and/or
6. improving the quality of the produced agricultural products; and/or
7. providing opportunities for the production of organic agricultural products.

Eligible costs within the agricultural farm are: 1. construction or renovation of buildings and other real estate used for agricultural production, including one used for protection of the components of the environment; 2. purchase, including through financial leasing, and/or installation of new machines, facilities and equipment, necessary for the improvement of the agricultural production process, including for the protection of the components of the environment, receipt of heat and/or electricity, necessary for the agricultural activities of economy and improvement of energy efficiency, storage and preparation for a sale of agricultural products; 3. creation and/or replanting of perennial plantations, incl. dessert vines, honey tree species for honey production, other fast-growing shrubs and tree species used for bioenergy production; 4. costs for achieving compliance with the newly introduced EU standards according to Annex / to the Guidelines for application under the measure /, incl. through financial leasing; 5. purchase of: facilities, attached inventory for beekeeping and respective equipment, necessary for the production of honey and other bee products, as well as for the breeding of queen bees, incl. through financial leasing; 6. costs for achieving compliance with existing EU standards - for young farmers receiving financial assistance under sub-measure 6.1 "Start-up aid for young

farmers; 7. purchase of land necessary for the implementation of the project in connection with the construction and/or modernization of buildings, premises and other immovable tangible assets, intended for the agricultural production activities and/or for the creation and/or replanting of permanent plantations; 8. purchase of buildings, premises and other real estates, necessary for the implementation of the project, intended for the agricultural production activities on the territory according to Annex to the Guidelines for application under the measure; 9. purchase, incl. through financial leasing, of specialized agricultural vehicles, such as: trucks, milk collection tanks, refrigerated vehicles for transporting products, vehicles for transporting live animals and birds; 10. costs for rehabilitation of existing and construction of new irrigation systems and equipment, including the construction of new and improvement of existing networks in the farms, water intake facilities, incl. wells and water storage facilities, as well as the purchase of technical equipment for their operation, incl. new pipe lines, drip irrigation systems, sprinkler systems, pumping stations, water storage/protection techniques/facilities, etc.; 11. costs for achieving compliance with internationally recognized standards, related to the introduction of quality management systems in the agricultural holdings, the introduction of good production practices, certification preparation; 12. purchase of software, incl. through financial leasing; 13. for know-how, acquisition of patents, rights, and licenses, for registration of trademarks and processes, necessary for preparation and implementation of the project; 14. costs related to the project, incl. costs for feasibility studies, fees, fees for architects, engineers and consultants, consultations on the environmental and economic sustainability of projects, studies on the technical feasibility of the project, carried out both in the process of project preparation before submitting the application for support and during of its implementation, which may not exceed 12 percent of the total amount of eligible project costs included in items 1-13, as the eligible design costs are calculated on the eligible costs for the designed site.

Additional conditions:

– The eligible costs for consulting services related to the preparation and management of the project and the costs for legal services, as part of the costs under para. 1 may not exceed: 1. one percent of the eligible costs - for projects with investments only for agricultural machinery and/or costs under para. 1, item 10-13; 2. five percent of the eligible costs under para. 1, items 1-13 – for projects with included investments for the creation of permanent plantations and/or construction and installation activities and/or equipment and/or machines;

– The costs for the purchase of land, buildings, and other real estates under para. 1, items 7 and 8, may not exceed 10 percent of the total amount of the eligible expenses under para. 1, items 1-6 and items 9-13.

– The expenses under item 14 are eligible if they are made no earlier than January 1, 2014, regardless of whether all related payments have been made

– The activities and the costs under the project, except for the costs under para. 1, item 14, shall be admissible if they have been made after submission of the application for support. -For an applicant receiving financial assistance under sub-measure 6.1 of the RDP 2014-2020 and if the achievement of the relevant standard is included in his approved business plan under this measure, the period is up to 24 months from the date of establishment of his farm, but no later than the date of submission of the application for final payment under measure 4.1.

– The costs for the purchase of land, buildings, and other real estate are eligible for

financing up to the amount of their tax assessment valid on the date of submission of the application for support, and in case the tax assessment is lower at the date of acquisition - up to this size.

– Purchase through financial leasing of the assets is eligible, provided that the user becomes the owner of the respective asset no later than the date of the application for interim or final payment for the same asset.

Financial assistance is not provided:

– for projects involving investments that do not comply with environmental legislation;
 – if for the same investment costs, the applicant has received public financial assistance from the state budget or the EU budget.

Ineligible costs: Described above, in the General Conditions for all measures.

Financial parameters for the projects: Minimum amount of the eligible costs - the BGN equivalent of **EUR 5000**. **The maximum amount** of the eligible costs – the BGN equivalent of EUR 200 000.

The intensity of the financial assistance: From 50% to 70% of the eligible costs depending on the applicant and the project.

Amount of financial assistance: Up to the BGN equivalent of **EUR 50 000**

Criteria for the selection of projects and their weight:

No.	Selection criteria	Points
1	The project provides support to sensitive sectors in agriculture - dairy farming, fruit and vegetable production, essential oils, and medicinal plants	25
2	The project is for organic agricultural production	20
3	The implementation of the project leads to the provision of additional employment on the farms	10
4	The project is for a young farmer who received support for the establishment of young farmers' farms and semi-market farms (small farms) in the period 2007-2013 and the period 2014-2020 and did not receive support under the Investment Activities Program under measures 121 and 4.1, to ensure continuity in agriculture.	10
5	The project increases the energy efficiency of the farm.	5
6	The project introduces innovations in agriculture.	15
7	The project has an integrated approach and contributes to the promotion of cooperation between producers, including activities related to environmental protection and achieving EU standards.	15
	Total	100

SUB-MEASURE 4.1.2. “INVESTMENT IN FARMS UNDER THEMATIC SUB-PROGRAM FOR THE DEVELOPMENT OF SMALL FARMS” RDP 2014-2020 (EAFRD)

Sub-measure code 4.1.2.

Title of the sub-measure: “Investments in farms under the thematic sub-program for development of small farms”

Description of the objectives and scope of the sub-measure

Objectives of the sub-measure:

Increasing the viability, efficiency, and stability of small farms on the territory of the LIG by:

- ✓ tangible and intangible long-term investments that lead to improved economic sustainability and productivity of farms;
- ✓ restructuring and development of the available material capacities;
- ✓ the introduction of new technologies in production and modernization and physical assets on farms;
- ✓ promoting the good organization of the "food chain" and "short supply chains", incl. activities for preservation of the quality of the production and the pre-market preparation.

Scope of the sub-measure:

1. Geographical scope - the entire territory of the LIG, including all settlements of the municipalities of Glavinitsa and Sitovo and their lands.
2. Scope of investments – tangible assets and intangible investments that:
 - a) Comply with Community standards relating to the investment concerned;
 - b) Improve the overall activity of the agricultural holding;
 - c) Correspond to the scope of the measure under the RDP and the Thematic sub-program for the development of small farms.

Eligible applicants and recipients of financial assistance:

Farmers registered and operating as Farmers on the territory of the LIG, who have an economic size of the holding of EUR 6,000 to EUR 7,999, measured in standard production volumes, their production is in one of the "fruit and vegetables" sectors, and/or "Essential oil and medicinal crops" (Clarification: the territory does not fall under the definition of "disadvantaged area" and therefore does not include the sector "livestock").

Applicants must have received at least 33% of the total income for the transitional year from agricultural activities. Important: Beneficiaries approved under measure 112 Establishment of young farmers from the RDP 2007-2013 are not supported.

Only applicants with a registered office for legal entities and a permanent address for individuals on the territory of the LIG are eligible.

Applicants should submit a business plan (BP) (*according to a template to the Guidelines for Applicants*), proving the improvement of the activity of the Insurance Act by applying the planned investments and activities described in detail in the submitted BP.

Eligible activities:

According to sub-measure 4.1.2. The LIG Strategy of the Community-led local development will support tangible and intangible long-term investments, leading to improved economic

sustainability and farm performance. The following activities will be supported:

- Investments for modernization and mechanization/investments in physical assets / directly related to reducing production costs and increasing labour productivity;
- Investments in construction, reconstruction/rehabilitation of irrigation/drainage facilities and equipment, including the construction of new and improvement of existing networks in the farms;
- Investments directly related to improving the energy efficiency of farms;
- Investments for storage and processing of agricultural products to preserve the quality of products;
- Investments in machinery and equipment for environmental protection, including manure storage;
- Investments in real estate related to the activity of farms;
- Investments to improve the pre-market preparation or storage of products (equipment for cleaning, sorting, packaging of products and buildings for specialized storage and processing; providing ventilation, insulation, and cooling);
- Investments for the creation and/or replanting of perennials, dessert vineyards, honey tree species for honey production, and fast-growing shrubs and tree species for bioenergy production;
- Investments for bioenergy production for the needs of farms;
- Investments to comply with newly introduced Community standards applicable to the relevant.

Priority under this sub-measure will be given to farms in the following sectors:

- Fruits and vegetables;
- Organic production
- Investments in energy efficiency, environmental protection, and innovation.

Eligible costs for material investments:

1. Construction, acquisition, and improvement of real estate, including through leasing;
2. Purchase of new machinery, equipment, and facilities, including computer software up to the market value of the assets, including through leasing;
3. Purchase of mowers, purchase of crushers (attachments), purchase of portable dryers, etc.;

Eligible intangible costs:

4. General costs related to the respective project for feasibility studies, fees, and honorariums for architects, engineers, and consulting services, consultations for the environmental and economic sustainability of projects, studies for the technical feasibility of the project. The total project costs may not exceed 12% of the total eligible investments of the project;
5. Costs for know-how, acquisition of patents, rights, and licenses, costs for registration of trademarks and processes necessary for the preparation and implementation of the project ”;
6. The cost of complying with internationally recognized standards.

Financial parameters of the projects

The minimum amount of the total eligible costs for a project - BGN 2,445, or the BGN equivalent of EUR 1,250.

The maximum amount of the total eligible costs for a project - BGN 48,895, or the BGN equivalent of EUR 25,000.

The intensity of the financial assistance is up to 60 % of the total amount of eligible costs;

The amount of the financial assistance shall be increased by 10%, the maximum combined support not exceeding 80%, in the following cases:

- For projects submitted by young farmers – 10% ;
- For collective investments or integrated projects that include support under more than one measure – 10%;
- For projects with activities supported by the EMI for agricultural productivity – 10%;
- Projects integrating horizontal priorities for innovation, protection, and restoration of the environment, including organic production, resource-saving, and adaptation to climate change – 10%;

Criteria for evaluation of projects and their significance

No.	Selection criteria	Points
1	The project provides support to sensitive sectors in agriculture - fruits and vegetables, essential oils, and medicinal plants	25
2	The project is for the organic production of agricultural products	20
3	The project provides additional employment	15
4	The project increases the energy efficiency of the farm	10
5	The project introduces innovations in farm	15
6	The project has an integrated approach and contributes to the promotion of cooperation between producers, including activities related to environmental protection and achieving EU standards.	15
	TOTAL	100

MEASURE: 4.2. “INVESTMENTS IN PROCESSING/MARKETING OF AGRICULTURAL PRODUCTS” RDP 2014-2020 (EAFRD)

Measure code: 4.2 Title of the measure: Investments in processing/marketing of agricultural products

Description of the measure’s objectives and scope

Objective: Modernization of processing enterprises to produce quality local food and products, create jobs, and stimulate enterprises to improve their efficiency and competitiveness; Promotion market interactions between agricultural producers and processors of agricultural products on the territory of the LIG;

The support is aimed at modernizing the physical assets of enterprises and farmers processing agricultural products to produce quality products, including those related to short supply chains. The processing of agricultural products creates added value to the production of raw materials from traditionally developed agriculture on the territory of the LIG. Quality foods are increasingly in demand on the market. By implementing the measure, entrepreneurship and the production of quality products will be encouraged. Investment support aimed at the processing of agricultural products encourages and employs in the territory.

Measure 4.2. "Investments in processing/marketing of agricultural products" aims to improve the overall activity, economic efficiency, and competitiveness of food processing enterprises by:

1. More efficient use of factors of production;
2. Introduction of new products, processes, and technologies, incl. short supply chains;
3. Improving the quality and safety of food and their traceability;
4. Achieving compliance with European Union (EU) standards;
5. Introduction of innovative processes and technologies aimed at environmental protection, as well as orientation towards the processing of biological products.

The geographical scope of the measure: the whole territory of the LIG, including all settlements of the municipalities of Glavinitsa and Sitovo and their lands.

Scope of the activities under the measure: Under measure 4.2. "Investments in processing/marketing of agricultural products" are supported projects that lead to the improvement of the overall activity of the enterprise through:

1. introduction of new and/or modernization of the existing capacities and improvement of their use, and/or
2. introduction of new products, processes, and technologies, and/or
3. reduction of the prime cost of the produced production, and/or
4. achieving compliance with newly introduced EU standards, and/or
5. improving cooperation with producers of raw materials, and/or
6. protection of the environment, including reduction of harmful emissions and waste, and/or
7. improving energy efficiency in enterprises, and/or
8. improvement of the safety and hygienic conditions of production and work, and/or
9. improving the quality and safety of food and their traceability, and/or
10. improvement of the possibilities for the production of organic food by the processing of primary agricultural organic products.

Eligible applicants and recipients of financial assistance.

1. Registered farmers, according to Ordinance No.3 of 1999, whose minimum standard production volume of their agricultural holding is greater than the BGN equivalent of EUR 8000;
2. Recognized producer groups, organizations, or those approved for financial assistance under measure 9. "Establishment of producer groups and organizations" of the RDP 2014 - 2020;
3. Sole traders and legal entities, other than the candidates under items 1 and 2.
4. The candidates must be registered under the Commercial Law or the Law on Cooperatives and have **headquarters** on the territory of **Glavinitsa Municipality or Sitovo Municipality**.
5. Farmers under item 1 as of the date of submission of the application for support must meet the following conditions:
 - 5.1. to be registered as farmers by the order of Ordinance No.3 of 1999 for establishment and maintenance of a register of farmers (SG, issue 10 of 1999);
 - 5.2. the minimum standard production volume of their agricultural holding is not less than the BGN equivalent of 8,000 euros.
6. The minimum standard production volume of the farm under item 5.2 shall be proved by

a declaration according to a sample for calculation of the minimum standard production volume of the holding during the current economic year at the moment of application and:

- 6.1. registration of the land cultivated by the applicant and the animals kept in the Integrated Administration and Control System (IACS); or
 - 6.2. document for ownership or use of the land or orders under Art. 37 c, para 4, 10 and 12 of the Law for the ownership and use of the agricultural lands, which participates in its calculation; or
 - 6.3. the questionnaire forms from the questionnaire/questionnaires of the farmer, for creating and maintaining a register of the farmers;
 7. The land cultivated by the applicant, which participates in the calculation of the minimum standard production volume of the agricultural holding, shall not contradict the provision of art. 33b of the Law for support of the agricultural producers;
 8. For sole traders who are not registered or are registered in the year preceding the year of application, the circumstances under item 5.1, item 5.2, and item 6 shall be recognized as farmers;
 9. Applicants for investment projects to promote integration between farmers and processing undertakings may only be persons who have been registered as farmers for at least two years before the date of application, except for recognized producer groups/organizations.
1. Applicants/beneficiaries shall be assisted provided that:
 - 1.1 have no due and liquid liabilities to the State Fund "Agriculture";
 - 1.2 have no obligations for taxes and compulsory social security contributions within the meaning of Art. 162, para. 2, item 1 of the Tax-Insurance Procedure Code and the interests thereon to the state or a municipality, or similar obligations, unless rescheduling, deferral, or security of the obligations is allowed or the obligation is under an act which has not entered into force; the type and amount of the obligations should be established by an act of a competent authority that has entered into force;
 - 1.3 . are not in open bankruptcy proceedings or have not been declared bankrupt;
 - 1.4 . are not in liquidation proceedings.
 2. The requirement under item 1.4 shall not apply to candidates that are sole traders.
 3. No financial aid shall be granted if the applicant/beneficiary's representative is a sole trader, company or legal entity and member (s) of their management body, as well as temporarily holding such a position, including procurator or commercial agent, and persons with decision-making or control powers concerning the applicant/beneficiary of the aid falls into any of the categories defined in Art. 106, Para 1, art. 107, Para 1 and art. 109 (2) (a) of Regulation (EU, Euratom) No.966/2012 of the European Parliament and of the Council of 25 October 2012 on the financial rules applicable to the general budget of the Union and repealing Regulation (EC, Euratom)) No.1605 / 2002 of the Council (OJ L 298, 268.2012), hereinafter referred to as "Regulation (EU, Euratom)" No.966/2012."
 4. No financial assistance shall be granted to applicants/beneficiaries of assistance:

- 4.1. in which the sole trader, company, or legal entity representing the applicant/beneficiary of the aid and a member/members of their management body, as well as temporarily holding such a position, including procurator or commercial agent, is a related person within the meaning of § 1, item 15 from the additional provisions of the Anti-Corruption and Confiscation of Illegally Acquired Property Holding a Public Position in the Managing Authority or the Paying Agency (PA) Act, which participated in the approval of the application for assistance;
- 4.2. which fall in the cases under Art.68 or 69 of the Anti-Corruption and Confiscation of illegally Acquired Property Act.
5. The fulfilment of the requirements under items 3 and 4 shall be proved by the applicant/beneficiary of the aid and by the persons, participating in the legal entity, for collective investments with:
 - 5.1. Declaration at the time of application;
 - 5.2. Official documents issued by the relevant competent authorities for the circumstances for which such documents are issued, and with a declaration for all other circumstances, including the circumstances under Art. 23 of the Commercial Register Act and the register of non-profit legal entities.
6. No financial assistance shall be provided to applicants/beneficiaries of assistance who are included in the Central database of the suspensions under Art. 108 of Regulation (EU, Euratom) No.966/2012.
7. No financial assistance shall be granted for projects involving investments for the processing of agricultural products into non-agricultural products outside Annex No.I of the Treaty or cotton for applicants falling into any of the categories set out in Art. 1 (5) and (6) of Regulation (EU) No.702/2014 of 25 June 2014, declaring certain categories of aid in the agriculture, forestry and rural sectors compatible with the internal market according to Articles 107 and 108 of the Treaty on the Functioning of the European Union and repealing Commission Regulation (EU) No.1857/2006 (OJ L 193, 1 July 2014), hereinafter “Regulation (EU) No.702/2014”.

Eligible activities and costs:

- (1) Financial aid shall be provided for investments in the following selected production sectors, related to the processing/marketing of agricultural products:
1. milk and milk products, including poultry eggs, except for the production, processing, and/or marketing of products resembling/replacing milk and milk products;
 2. Meat and meat products;
 3. Fruits and vegetables, including mushrooms;
 4. honey and bee products except for production, processing, and/or marketing of products resembling/replacing honey and bee products;
 5. cereals, milling, and starch products except for production, processing, and/or marketing of bread and pasta;
 6. vegetable and animal oils and fats except for production, processing, and/or marketing of olive oil;
 7. Technical and medical cultures, including oil-bearing rose, herbs, and cotton, except for Production, procession, and/or marketing of tobacco and tobacco products, sugar and

confectionery products;

8. Ready meals for farm animals (fodders);

9. Grape must, wine, and vinegar.

(2) Financial assistance is provided for performing investments and for production of energy through processing primary and secondary biomass from plant and animal products excluding biomass from fishery products in compliance with the requirements of Article.26 in case that, the energy will be used for own consumption, connected with the activities, falling in some of the sectors referred to in paragraph 1.

(3) Products from eligible for financial assistance sectors under paragraph. 1, for whose processing and/or marketing is applying, must be described in Annex 1 to Article.38 from the contract for the functioning of the European Union hereinafter referred to as “Annex 1 from the contract” and an annex to the application guidelines for the measure.

(4) The compliance of the projects with the sectors under paragraph. 1 shall be determined based on agricultural products for which processing and/or marketing is applied, the technology of the production, and the final products obtained.

Financial assistance is not provided for activity:

1. including in operation programs of the applicants – fruit and vegetable producer organizations according to regulation 11 from 2007 on the terms and conditions for recognition of fruit and vegetable producer organizations and their associations and terms and conditions of approval and amendment of approved operation programs (updated in SG, issue 42 of 2007);

2. Eligible for support under the article. 1 of Regulation # 2 from 2014 for the terms and conditions for terms and conditions of providing financial assistance under the national program for support the wine sector for the period of the year 2014 – 2018 (updated in SG, issue 34 of 2014.; as amended, issue 60 and 89 of 2014) for making of wine products referred to in Annex 1 from the Law on Wine and Spirits;

3. Connected with the production and the storage of olive oil and table olives;

4. Assisted under Article 6 of the Regulation (EC) No.1952/2005 of the council from 23rd of November 2005 on the common organization of the market of hops and repealing regulations (EEC) No.1696/71, (EEC) No.1037/72, (EEC) No.879/73 and (EEC) 1981/82 (OB L 314, 30th November 2005);

5. Connected with processing and/or marketing of fish and fish products.

Ineligible costs:

– Simple replacement and maintenance costs;

– Costs incurred in the performance of leasing contracts, insurance costs, interest costs, costs of penalties and fees, other costs, connected with the contract for leasing, running costs, and costs for insurance;

– VAT costs, which are recoverable following national VAT legislation;

– Purchase of second-hand equipment’

– Contribution in kind

– For investments in agriculture – purchase rights for production and payment, purchase of animals, purchase of annual plans and their planting;

– Investments, for which is established, that will harm the environment;

– Costs incurred before the submission of an application for funding by the beneficiary, whether or not all related payments have been made, except for the costs for the feasibility studies, fees, fees for architects, engineers and consulting services, consultations on the environmental and economic sustainability of projects, researches for the technical feasibility of the project, performed after 1 January 2014.

Financial parameters for the projects: Minimal size for eligible costs – BGN 9779 or BGN equivalent of 5000 euro. **Maximal size of eligible costs** – the BGN equivalent of 200,000 euros – BGN 391 160.

The intensity of financial assistance: Up to 50% of eligible costs following the applicant and the project.

Size of the financial support: Not more than BGN 117 348, or BGN equality of 60 000 euro.

- (1) Financial help for processing of products from Application No.1 from the contract in products outside Application No.1 from the contract or cotton is provided following the requirements of Regulation (EN) No.702/2014. (2) The applicants for financial help whose investments fall within the scope of paragraph 1 represent a declaration for the amount of the received state aid according to a model, according to Annex/to the guidelines for application under the measure.

Criteria for the selection of projects and their weight

No.	Selection Criteria	Points
1	The project promotes cooperation and integration between farmers and enterprises from the Food processing industry on the territory of the Local Initiative Group (LIG)	30
2	The project is for investments in assets for storage, processing, packaging, cooling, freezing, and drying of products, produced on the territory of the Local Initiative Group (LIG)	15
3	The project is connected with the implementation of innovations	10
4	The project is for the processing of biological products	5
5	With this project are introduced new processes and technologies, aiming conservation of the environment	10
	The project encourages employment through disclosure of a minimum 1 new workplace and the preservation of new working places	30
	IN TOTAL	100

Measure: 6.4 **“Investments in support of non-agricultural activities”**

Rural Development program 2014-2020 (European Agricultural Fund for Rural Development)

Measure code: 6.4

Name of the measure: “Investments in support of non-agricultural activities”:

Description of objectives and scope of the measure: Promoting the diversity of Non-Agricultural economic activities, creating and development of microenterprises on the territory of the Local Initiative Group (LIG), and disclosure of working places.

Development of entrepreneurship in rural areas is of significant importance for keeping the residents, especially the young people, and for diversification of the economy of rural areas with new activities, products, and services for the population and external markets for the territory.

Business development has a favourable effect on achieving recovery, higher and quality employment, and poverty reduction in these areas. Data of the enterprises and employment on the territory of Local Initiative Group (LIG), which is argued by the performed in the preparation of Community-Led Local Development Strategy (CLLDS) researches and analysis. Projects under the measure for which interest has been expressed will contribute to the achievement of crosscutting objectives in the scope of innovations and environmental. Supporting investments in non-agricultural areas will provide the resource for increased competitiveness of productions and

services of the territory, including by creating of new enterprises and the introduction of new services, products, more efficient or innovative technologies. Investment activities are directly related to the creation of quality employment. Diversification of non-agricultural activities and the restructuring of the local economy will be accelerated. The measure will encourage projects in the area of “Innovations”, “Green economic”, including energy from Renewable Energy Sources (RES) for own consumption. Through financial support, part of the potential for tourism development can be utilized, combining natural and cultural values.

The geographic scope of the measure: The whole territory of Local Initiative Group (LIG), including all settlements from municipalities Glavinitsa and Sitovo in their administrative-territorial borders.

Eligible recipients of financial assistance:

1. Agricultural producers or microenterprises, registered as sole traders, or legal entities under the Commercial Law, The Law of Cooperatives, as well as individuals registered under the Crafts Act;

2. Applicants must have a **registered office** or a **permanent address** for natural persons under the territory of the **municipality of Glavinitsa or municipality of Sitovo**;

3. In designating an enterprise as a micro-enterprise follows the definition of a Recommendation 2003/361/EC of the Commission.

4. The applicant must present a developed business plan, which shows the economic viability of the investment for 5 years, and construction and installation works for 10 years.

Eligible activities and costs

Support is provided for investments in non-agricultural activities aimed at:

1. Development of tourism (construction and renovation of tourist sites and development of tourist services, connected with accommodation, food, active recreation, and entertainment);

2. Manufacture or sale of products, not included in Annex 1 of the Treaty on the Functioning of the European Union (regardless of the products and materials used);

3. Development of services in all sectors (for example: child care, elderly care, disabled people, health care (only outside the public), accounting and other, connected with the business services, vet activities, services based on IT, etc.;

4. Production of energy from renewable energy sources for own consumption;

5. Craft development (including providing of services, connected with participation of visitors in crafting activities) and other non-agricultural activities.

Eligible activities and costs under the measure will be indicated in the application guidelines of the Local Initiative Group (LIG).

No activities are financed under the measure that leads to agricultural activity or the result of the activity is a product listed in Annex 1 of the Contract for creating of European Community.

No financial assistance is provided for energy production from renewable energy sources (RES), excluding the production of energy from secondary products, waste, and residues.

Financial parameters for the projects: Minimum amount of the total eligible costs – the BGN equivalent of 5000 euro or BGN 9779. The maximum amount of total eligible costs – BGN equivalent of 200 000 euro or BGN 391 160.

The intensity of financial assistance and rules for “minimum support”: The intensity of the financial support is up to 75% from eligible costs following the applicant and the project, subject to the rules on “minimum support” according to the terms of the regulation (EU) No. 1407/2013 of EC from 18.12.2013 concerning the application of Articles 107 and 108 from the contract for the functioning of EU with the support of “de minimis”. The intensity of support for a tourism development project (construction and renovation of tourist sites and development of touristic

services, connected with accommodation, active rest and entertainment) may not exceed 5 percent of the total eligible costs”.

Amount of the financial assistance: The amount of the financial assistance for one project under the strategy cannot exceed the BGN equivalent of 50 000 euro – BGN 97 790, and when the project envisages investments in accommodation, the value of the financial assistance for one project is not more than BGN equivalent of BGN 50 000 with VAT included (*General conditions to measures*).

Criteria for the selection of projects and their weight

No.	Criteria for selection	Points
1	The project is for young entrepreneurs for up to 40 years, incl.	15
2	The project is in the field of social or health services	10
3	The project is for production activities	20
4	The project includes technological innovations	15
5	The project creates 1 working place – 10 points, 2 – working places 15 points, more than 2 – working places 25 points	25
6	The applicant has carried out an activity on the territory at least 2 years before the date of application	5
7	The project includes innovations	10
	In total	100

Measure 7.2. “Investments in CREATING, IMPROVEMENT OR EXPANSION OF ALL KINDS SMALL IN SCALE INFRASTRUCTURE”

Code of the measure: 7.2 name of the measure: “Investments in creating, improvement or expansion of all kinds small in scale infrastructure”

Description of the purposes and scale of the measure:

Purpose: This measure aims to contribute to overcoming, backwardness, and territorial imbalance, to promote social inclusion, poverty, reduction, and the improvement of the conditions and environment for economic development in the territory of the Local Initiative Group (LIG).

Measure 7.2 from Community-led local development strategy responds to stated needs of the local community from creating, developing, improving the condition of the local infrastructure as a living environment, labour and economic activities of the population. Public investments under the measure are planned to improve the appearance and physical side in some of the settlements, limiting the depopulation of the territory, reducing the risk of social exclusion, and improving the quality of life. The sub-measure provides support for investments in public buildings with educational, historical, cultural, and social purpose, as well as the adjacent spaces, green areas for public use, streets, sidewalks, squares, and street lighting in the settlements on the territory of Local Initiative Group (LIG).

Through investment in educational infrastructure access and quality of the provided education is facilitated and the number of early schools leaving is decreasing. Through investments in the cultural infrastructure, new opportunities are created for the revitalization of the villages and the territory. Support for investment in small infrastructure creates main services for the population in the rural area.

Scope of the measure:

The geographical scope of the measure: The whole territory of Local Initiative Group (LIG) including all settlements from municipalities Glavinitsa and Sitovo in their administrative-territorial boundaries.

Scope of the investments: The measure supports investments in the creation, improvement, or expansion of all types of small-scale infrastructure in 35 settlements on the territory of Local Initiative Group (LIG) “Glavinitsa – Sitovo Kraydunavska Dobrudzha”, including investments in energy from renewable sources and energy saving.

Eligible applicants and recipients of financial assistance

1. Municipality of Glavinitsa and municipality of Sitovo;
2. Non-profit legal entities for activities related to social infrastructure and cultural life;
3. Community centers for activities related to cultural life;
4. The applicants must have **headquarters** on the territory of the **Municipality of Glavinitsa or Municipality of Sitovo**.

Applicants/Beneficiaries of the support shall not be assisted in the presence of any of the circumstances for removal when:

1.1. Have been declared bankrupt or are in an insolvency proceeding, are in liquidation proceedings, or have entered into an out-of-court settlement with creditors within the meaning of Article 740 of the commercial register or have ceased their activity;

1.2. Do not meet the requirements of Article 12 paragraph 3 point 2 under Ordinance No.22 of 18.12.2015;

1.3. Are deprived of the right to practice a certain profession or activity, established by an act of the competent authorities that has entered into force following the law of the State in which the offense was committed;

1.4. By fraud or negligence have provided false information, necessary to establish the absence of grounds for refusal of funding, the criteria for selection or performance of a contract, established by an act of the competent authorities which has entered into force, following the legislation of the state in which the breach was committed;

1.5. Have agreed with other persons to distort competition, when the distortion is established by an act that has entered into force from the competent authorities, following the law of the country, in which the breach was committed;

1.6. Have infringed intellectual property rights, when the infringement is established by an effective act of the competent authorities, according to the legislation of the state in which the breach was committed.

1.7 Have tried, when the breach is found with an act that has entered into force of the competent authorities, according to the legislation of the state in which the breach was committed:

- a) To influence the persons with decision making or control powers by the paying agency (PA) and/or the managing authority
- b) To receive information from persons with decision-making or control from Paying agency (PA) or/and or Managing authority (MA) which may give them an unjustified advantage, related to the fertilizer for receiving or paying financial support;

1.8. It has been established that it is their fault that they have not fulfilled their obligations under a contract for the provision of financial assistance from European structural and

Investment funds, contract for public procurement contract, construction concession contract of service, led to its early termination, payment of benefits or other contractual penalties, except in cases where the default affects less than 50 percent of the value or volume of the contractual activities of the contract;

1.9. Were found during inspections, audits or investigations, carried out by the administrators with the budget, the European Anti-Fraud Office or The European court of auditors significant shortcomings

1.10 Has been established by an effective penal decree or court decision, that in the performance of a contract for the provision of a contract for financial assistance from the European Structural and Investment Funds, public procurement contract, construction concession contract or for service have violated Art.118, 128, 245, 301, 302, 303, 304 or 305 from Labour Code;

1.11. Have committed an irregularity, which has been established by an act that has entered into force from competent authorities, according to the legislation of the state in which the order was made;

1.12 Have due and liquid liabilities to a paying agency (PA) unless rescheduling, deferral, or security of the liabilities is allowed;

1.13. Are included in the early detection and removal system under Art. 108 of Regulation (EU, Euratom) No. 966/2012 of the European Parliament and of the Council of 25th of October 2012.

On the financial rules applicable to the general budget of the union and repealing a regulation (EU, Euratom) No.1605/2002 of the council (OB L, issues 298 from 26th of October 2012) hereinafter referred to as the “Regulation (EU, Euratom No.966/2012”;

1.14 Representing applicant/user his legal or authorized representative, member (s) of his/her management body, as well as temporarily holding such a position, as well as the persons with decision-making or control powers concerning the applicant/user of the support:

a) Are subject to a conflict of interests within the meaning of Art. 57 of the Regulation (EU, Euratom) No. 966/2012;

b) Is a connected person within the meaning of Art. 1, paragraph 15 of the additional provisions of the anti-corruption law and Illegally Acquired Property Act with a manager paying agency (PA), MA or with executives in a paying agency or Management authority;

c) Is a person who is in an employment or official legal relationship in Paying agency or Management authority up to one year from the termination of the legal relationship;

d) Has been convicted with an effective sentence, unless rehabilitated for: participation in an organized criminal group under Art. 321 and Art. 321a of the Criminal Code; Bribery under Art. 301, 302, 302a, 303, 304, 304a, 304b, 304c, 305, 305a, 306 or 307 from the Penal Code; A crime against the financial, tax or social security system, including money laundering under Art. 253, 253a, 253b, 254, 254a, 254b, 255, 255a, 255b, 256, 258, 259, 259a or 260 from the Penal Code; Crime against the economy under Art. 219, 220, 221a, 223, 224, 225, 225b, 225c, 226, 227, 227b, 227c, 227d, 227f, 228, 229, 230, 231, 232, 233, 234, 234a, 234b, 234c, 235, 236, 237, 238, 239, 240, 242, 242a, 243, 244, 244a, 245, 246, 247, 248, 248a, 249, 250, 251, or 252 from Penal code; Crime against property under Art. 194, 195, 196, 196a, 197, 198, 199, 200, 201, 202, 203, 204, 205, 206, 207, 208, 209, 210, 211, 212, 212a, 212b, 213, 213a,

214, 214a, 215, 216, 216a or 217 from the Penal Code; Crimes against public health and against property under the Art. 352, 352a, 353, 353a, 353b, 353c, 353d, 353e, 353f; Crime under Art. 108a from the penal code; Crime under Art. 159a, 159b, 159c or 159d from the penal code; crime under Art. 172 from Penal Code; Crime under Art. 192a from Penal Code;

e) Is a person for whom any of the circumstances is present under items 1.3, 1.4, 1.5, 1.6, 1.7, 1.8, 1.9 item 1.11, 1.12, and 1.13;

2. In the cases of candidate municipalities the requirements of item 1.1, 1.2 and 1.11

No advantage is given, and the given advantage is taken away when the Paying Agency (PA) or another competent authority finds that the applicant/user has artificially created the conditions necessary to obtain that advantage, contrary to the objectives of European Law and the Bulgarian legislation in the field of eligible activities;

Eligible activities and costs

Under measure 7.2 “Investment in creation, improvement, or expansion of all types of small-scale infrastructure” financial assistance is provided for the following eligible activities:

1. Construction, Reconstruction, and/or rehabilitation of new and existing streets and sidewalks and facilities and accessories to them;

2. Construction, Reconstruction, and/or rehabilitation of new and existing municipal roads and facilities and accessories to them;

3. Construction, reconstruction, and/or rehabilitation of water supply systems and facilities in agglomerations with less than 2000 equivalent inhabitants in the plural area; IS EXCLUDED FROM

Community-led local development strategy.

4. Construction or renovation of areas for wide public use, intended for permanent satisfaction of the public needs of municipal importance;

5. Construction, reconstruction, repair, equipment, and/or furnishing of social infrastructure for the provision of services that are not part of the process of deinstitutionalization of children and adults, including the transport vehicles;

6. Reconstruction or repair of municipal buildings in which public services are provided to improve their energy efficiency;

7. Construction, reconstruction, repair, restoration, purchase of equipment and/or furnishing of sites related to cultural life, including mobile ones, including activities for vertical planning and improvement of adjacent spaces;

8. Reconstruction, repair, equipment, and/or furnishing of the municipal educational infrastructure of local importance in the rural area.

No grant is awarded:

1. For activities eligible for support under measure 4.1 “Investment in agricultural holdings” of measure 4 “Investing in tangible assets” from the program for development of rural areas for the period 2014-2020; 4.2. “Investments in processing/marketing of agricultural products” from measure 4. “Investments in tangible assets” from the program for development of rural areas for the period 2014 – 2020; under measure 4.1.2 “Non-productive investments under the thematic sub-thematic sub-program for development of small farms” Sub-measure 4.2.2 “Investment in processing/marketing of agricultural products under the thematic sub-program for development of small farms” sub-measure 4.4 “Non-Productive investments”; sub-measure 4.4.2 “Non-

productive investments under the thematic sub-program for development of small farms" from measure 4 "Investments in tangible assets"; sub-measure 6.3 "Start-up support for development of small farms" from measure 6 "Development of farms and enterprises from the rural development program for the period 2014-2020" Sub-measure 6.4.1 "Investments in support of non-agricultural activities"; Sub-measure 6.4.2. "Investments in support of non-agricultural activities under the thematic sub-program for development of small farms" of measure 6 "Development of farms and enterprises"; Sub-measure 7.6 "Research and investment, connected with maintenance, recovery, and improvement of the cultural and natural heritage of the villages" from measure 7 "Main services and village renewal in rural areas" from the program for the development of the rural areas for the period 2014 – 2020., Sub-measure 7.5 "Investments for public use in recreation infrastructure, tourist infrastructure" of measure 7 "Main services and renewing of the villages in rural areas" or under the measure 16 "Cooperation";

2. for activities, eligible for support under the demarcation line with the operational program "Growing regions";

3. for activities in healthcare buildings throughout the country;

4. for activities, for construction, reconstruction, repair, equipment and/or furnishing of social infrastructure for providing services, which are part of the process for deinstitutionalization of children and adults, including transport vehicles, or which are funded under the operation "Independence life" from the operational program "Development of Human resources" 2014-2020;

5. for activities for sites with the status of the immovable cultural value of national importance granted by Minister of Culture or "Global significance"; Construction, reconstruction, repair, restoration, purchase of equipment and/or furnishing of objects related to the cultural life, including mobile ones, including activities for vertical planning and improvement of the adjacent spaces;

6. for activities, for reconstruction, repair, equipment and/or furnishing of the educational infrastructure of regional and national importance and in particular vocational, sport schools, art and culture schools, and universities;

7. for activities, for reconstruction, repair, equipment and/or furnishing of municipal educational infrastructure, "Science and education for smart growth";

8. for activities for the creation of information and communication technologies in educational infrastructure.

Ineligible costs: Financial assistance is not provided for

1. Purchase or leasing of land and buildings; 2. Purchase of second-hand equipment, furniture, and vehicles; 3. Value-added tax (VAT) except for non-refundable (VAT), where it is actual and final by applicants, other than tax-exempt persons according to Act.3 paragraph 5 of the Law on value-added tax; 4. Leasing except financial leasing; 5. Operating expenses, including maintenance, rent, insurance, maintenance; 6. bank and administrative fees, border costs, payment and refinancing of interest, insurance; 7. Compensation for the expropriation of property; 8. Contribution in kind; 9. Purchase of new vehicles and equipment, including computer software above their market value; 10. Annual plants; 11. Cash payments; 12. Interests and commissions, the profit of the leasing company, interest expenses for refinancing, Operating, and insurance costs under an insurance contract in cases of financial leasing; 13. Investments for

which paying agency (PA) or other competent authority established artificially created conditions receiving the support to achieve an advantage contrary to the objectives of the measure; 14. Investments that are a simple replacement; 15. Investments that have been found to harm the environment; 16. Penalties for non-performance under contracts with selected suppliers/contractors; 17. Accrued interest on paid advance payments; 18. Investments in their part that exceeds the reference number.

Financial parameters for the projects: Minimum amount of eligible costs – The BGN equivalent of 5000 euro – BGN 9779. **The maximum amount** of eligible costs the BGN equivalent of 200 000 Euro – BGN 391 160.

Paragraph. (1) Financial support for the eligible values under item 5 of the list of eligible activities, shall be provided after a decision of the European Commission has ruled on a submitted notification for individual investment support following the requirements of the guidelines of the European Union guidelines on state support in the sector of agriculture and forestry and in rural areas for the period 2014-2020 (OJC 1.07.2014.).

Paragraph. (2) Applicants for financial support, whose investments fall within the scope of the paragraph. 1, shall submit a declaration for the amount of the received state support according to the annex to the guidelines for application under the measure.

Paragraph. (3) Financial support for the eligible activities under item 7 of the list of eligible activities shall be provided in compliance with the requirements of Regulation (EU) No. 1407/2013 of the commission from 18th of December 2013 on the application of Articles 107 and 108 of the Treaty on the Functioning of the European Union to *de minimis* support (OB L 352 from 24th of December 2013) hereinafter referred to as the Regulation (EU) No. 1407/2013.

Paragraph. (4) The financial support for one applicant/user for activities under item 7 of the list of eligible activities together with the other received minimum support may not exceed the BGN equivalent of 200,000 euro for a period of three consecutive budget years including the current one.

Paragraph. (5) Applicants for financial assistance, whose investments fall within the scope of para.3, submit a declaration for minimum support according to an appendix to the guidelines for application under the measure.

The intensity of financial assistance: Up to 100 percent of eligible costs.

✓ The financial support amounts to 100 percent of the total amount of eligible costs for projects, which after investing do not generate net income;

✓ The amount of financial support for projects that will generate net revenue after the investment is determined based on a cost-benefit analysis (financial analysis), except in the case of projects for which the amount of eligible costs for the project does not exceed the BGN equivalent of 50,000 euro and for projects under the item.7;

✓ The financial support amounts to 100 percent of the total amount of eligible costs for projects, which after investing do not generate net income, established based on a “cost-benefit” analysis (financial analysis), but the total amount of eligible costs for the project does not exceed the BGN amount of 100,000 euro;

✓ The difference between the total amount of eligible costs and the amount of financial assistance determined based on a cost-benefit analysis shall be provided by the applicant, as the

applicant participation can only be in cash form.

Amount of financial support:

Not more than the BGN equivalent of 100 000 euro for one project – BGN 195 580.

Criteria for the selection of projects and their weight

No.	Criteria for selection	Points
1	The project is implemented in a settlement outside the municipal register	15
2	The project is implemented in the town/village centre of the municipality	5
3	The project has a scope of activities more than one settlement	10
4	The project envisages the implementation of energy efficiency measures	15
5	The project includes the improvement of social or educational infrastructure on the territory	15
6	The project is focused on creating new services for the population	15
7	The project includes more than one type of eligible activities	15
8	The project includes creating an accessible environment for people with disabilities	10
	Total	100

Measure 7.5 “**INVESTMENTS FOR PUBLIC USE IN RECREATION INFRASTRUCTURE, TOURIST INFRASTRUCTURE**” *RURAL DEVELOPMENT PROGRAM 2014-2020 (EUROPEAN AGRICULTURAL FUND FOR RURAL DEVELOPMENT)*

Code of the measure: 7.5

Name of the measure: “Investments for public use in recreation infrastructure, tourist infrastructure”

Description of the objectives and scope of the measure:

Purpose: Utilization of tourist resources on the territory of Local Initiative Group (LIG), through support for leisure infrastructure, local tourism, tourist information, and small-scale tourist infrastructure for public use.

Scope of the measure:

The geographical scope of the measure: The whole territory of Local Initiative Group (LIG), including all settlements of the municipalities Glavinitsa and Sitovo in his administrative-territorial borders.

Scope of investment: The measure supports investments in the creation, improvement, or expansion of all types of small-scale tourist infrastructure for public use in the 35 settlements on the territory of Local Initiative Group (LIG) “Glavinitsa – Sitovo Kraydunavska Dobrudzha”, including tourist and visitor centers, arts and crafts centers, hiking trails, bike lanes, tourist information system such as signs and signposts; safety equipment.

Eligible recipients of financial assistance

1. Glavinitsa Municipality
2. Sitovo Municipality
3. Non-profit legal entities
4. The candidates must have a seat on the territory of the municipality of Glavinitsa or the municipality of Sitovo.

Eligible activities and costs:

1. Construction, reconstruction, repair, purchase of equipment, and/or furnishing of tourist information centers.

2. Construction, reconstruction, repair, purchase of equipment, and/or furnishing of the visitor centers for presentation and exhibition of the local natural and cultural heritage.

3. Construction, reconstruction, repair, purchase of equipment, and/or furnishing of the centers for art and classes for tourist purposes.

4. Construction, reconstruction, repair, and purchase of facilities for tourist attractions that are related to the local natural, cultural, and/or historical heritage and provide services for cognitive or educational purposes.

5. Construction, reconstruction, repair, and purchase of tourist infrastructure facilities (information boards and signposts for tourist places and routes, safety facilities, bike lanes, and tourist trails.

Ineligible costs: No financial assistance is provided for:

1. Purchase or lease of land and buildings; 2. Purchase of second-hand equipment, furniture, and vehicles; 3. Value-added tax (VAT) is an exception to non-refundable VAT when it is actually and definitively borne by applicants other than the persons exempt from tax according to the article.3, paragraph 5 of the Law on value-added tax (VAT); 4. Leasing except financial leasing; 5. Operating expenses, including maintenance, rent, insurance, maintenance; 6. Bank and administrative fees, guarantee costs, repayment, and refinancing of interest and insurance; 7. Compensation for the expropriation of property; 8. Contribution in kind; 9. Purchase of new vehicles and equipment, including computer software above their market value; 10. Annual plants; 11. Cash payments; 12. Interest and commissions, the profit of the leasing company, interest expenses for refinancing, operating, and insurance costs under the lease contract in cases of financial leasing; 13. Investments for which the Paying agency or another competent authority has established artificially created conditions for receiving support to achieve an advantage contrary to the objectives of the measure; 14. Investments that are a simple replacement; 15. Investments that have been found to harm the environment; 16. Penalties for non-performing the contracts with the selected suppliers/contractors; 17. Accrued interest on advance payments; 18. Investments in their part that exceeds the reference costs.

State/ Minimum aid regime:

The measure will be subject to the State support conditions set out in the guidelines of the Ministry of Agriculture, Food and Forestry for the applicable state support regime under measures financed under the Rural Development Program 2014-2020 in the strategies for community-led local development and conditions arising from it. In the implementation of a project financed in whole or in part by European Agricultural Fund for Rural Development, including only non-profit activities and implemented by a person registered under the law on non-profit legal entities or the law on community centers, shall not apply Art. 107 and 108 of the treaty on the Functioning of the European Union.

Financial parameters for the projects:

The minimum amount of eligible costs is the BGN equivalent of 10 000 Euro – BGN 19 558.

The maximum amount of the eligible costs BGN equivalent of 200 000 euro – BGN 391 160.

The intensity of financial assistance

Up to 100 % of the eligible costs following the applicant and the project

✓ The financial support amounts to 100 percent of the total amount of the eligible costs for projects that do not generate net income after the investment.

✓ The amount of financial assistance for projects that will generate net income after the investment is determined based on a cost-benefit analysis (financial analysis) except in the case of projects, for which the amount of eligible costs for the project does not exceed the BGN equivalent of 50,000 euro.

✓ The financial support amounts to 100 percent of 100 of the total amount of eligible costs for projects which, after the investment, will generate net revenues established based on a “cost-benefit” analysis (financial analysis), but the total amount of eligible costs for the project does not exceed the BGN equivalent of 100,000 Euro.

✓ The difference between the total amount of eligible costs and the amount of financial assistance determined based on “cost-benefit” analysis is provided by the applicant as the participation of the candidate can only be in cash form.

Amount of financial support: Up to the BGN equivalent of 50 000 euro – BGN 97 790.

Criteria for the selection of projects and their weight

	Criteria for selection	Points
1	The project has an innovative character for the territory of Local Initiative Group (LIG)	20
2	The project encourages the promotion of local natural landmarks	15
3	The project encourages the promotion of local cultural and historical heritage	15
4	The project involves creating an accessible environment for people with disabilities	15
5	The project includes the creation of user safety facilities	10
	The project improves the information security of tourism on the territory of Local Initiative Group (LIG)	10
	The project ensures the improvement of the environment and achieves an ecological effect and impact	20
	Total	100

MEASURE OUTSIDE THE RURAL DEVELOPMENT PROGRAM 2014-2020 AND REGULATION No.1305/2013, BUT IN LINE WITH THE OBJECTIVES OF THE RURAL DEVELOPMENT PROGRAM AND THE REGULATION (FINANCED BY THE EUROPEAN AGRICULTURAL FUND FOR RURAL DEVELOPMENT)

MEASURE 19.05: “RESEARCH, PRESERVATION, AND UTILIZATION OF NATURAL RESOURCES AND CULTURAL HERITAGE ON THE TERRITORY OF THE MUNICIPALITIES GLAVINITSA AND SITOVO” *THE RURAL DEVELOPMENT PROGRAM/EUROPEAN AGRICULTURAL FUND FOR RURAL DEVELOPMENT*

Measure code 19.05: Name of the measure: “Research, preservation, and utilization of natural resources and cultural heritage on the territory of the municipalities Glavinitsa and Sitovo”

Description of the objectives and scope of the measure

Objectives of the measure aimed at the development and promotion of natural resources and cultural and historical heritage on the territory of municipalities of Glavinitsa and Sitovo. The establishment of partnerships and the achievement of cooperation between local organizations

for the implementation of activities in the field of protection and restoration of natural resources, conservation, continuity and popularization of samples of the tangible and intangible cultural heritage, organizing thematic actions and events aimed at activating the local community and promoting projects. Within **the scope of the measure**, provides a grant for tangible and intangible investments and activities for the restoration, preservation, and promotion of cultural traditions and identity of the rural area and preservation and popularization of the natural resources and the wealth of the territory of Local Initiative Group (LIG). Projects that contribute to conservation and development of rural natural and cultural heritage are supported and the strengthening of rural communities as a unique social natural and cultural asset in the settlements on the territory of Local Initiative Group (LIG).

Nature, cultural and historical heritage are among the most pronounced comparative advantages of rural areas. Preserving the spiritual and cultural life of the population, especially adolescents and young people is important for the development of the territory. The cultural and natural heritage is preserved and developed in the local cultural centers, such as community centers, schools, museums, some of the non-governmental organizations. Investment in the development and enrichment of cultural identity and traditions leads to an increase in the quality of life of people in a given territory. The protection and promotion of cultural and natural heritage have a favourable sustainable impact in terms of environmental protection.

Eligible recipients of financial assistance:

1. Municipality of Glavinitsa;
2. Municipality of Sitovo;
3. Non-profit legal entities registered under the law on non-profit legal entities;
4. Community centers registered under the law on people's community centers;
5. Legal entities registered under the Commercial Law, the Law on Cooperatives or the Law on crafts;
6. The applicants must have a seat on the territory of Glavinitsa municipality or Sitovo municipality.

Eligible activities:

1. Preparation of studies and plans for protection, restoration, rehabilitation, protection, and management of NATURA 2000 sites, or other sites of high natural value (landscape, ecological, geological, and geomorphological), as well as of cultural, archaeological, and architectural value.

2. Preparation and implementation of information programs on environmental issues and sustainable development

3. Investments related to the maintenance, restoration, and improvement of the natural heritage:

- a) Implementation of activities from approved plans for management of protected areas, announced under the law on protected areas;
- b) Implementation of activities in protected areas that do not have approved management plans following their notification orders, after coordination with competent authorities.
- c) Activities related to the protection and restoration of the populations of species included in the law on biological diversity;

- d) Activities related to the protection and restoration of the habitats included in the law on biological diversity;
- e) Activities related to the protection of ancient trees;
- f) Activities related to the protection of territories, animals, plants, natural formations, which are not protected by law but are of particular importance to the local community related to rural folklore and customs, or are part of the rural landscape
- 4. Activities for protection and restoration of the traditional rural landscape
- 5. Development of interpretation programs and preparation of guides and animators for their implementation.
- 6. Activities for preservation, identification, restoration, and renewal of the natural and cultural heritage of the territory.
- 7. Investments in intangible cultural heritage: research, documentation, and preservation of elements of intangible cultural heritage, including local folklore, protection of natural spaces and memorial; promoting, transmitting, and reviving various aspects of cultural heritage.
- 8. Activities related to the promotion and popularization of the projects.

Eligible costs are:

- 1) Costs for field inventory/study of physical blocks in areas of high natural value.
- 2) Costs, related to research, archaeological excavations, conservation, and/or restoration of cultural monuments of local significance.
- 3) Costs for development and development of the infrastructure of tourist areas.
- 4) Costs for training and preparation of guides and animators.
- 5) Costs for cleaning the territories from Municipal waste tax.
- 6) Costs for the establishment of tourist and cultural infrastructure, other than those eligible under measure 7.5 of the strategy of Local Initiative Group (LIG)
- 7) Reconstruction on the existing characteristic elements on the territory of Local Initiative Group (LIG), restoration, and conservation.
 - Expenses related to the direct implementation of the restoration, construction and repair and construction and assembly activities;
 - Unexpected costs of up to 5% of the value of the approved costs.
- 8) Expenses for creation, storage, and enrichment of collections (natural, historical, ethnographic, etc.)
- 9) Costs for cleaning, preservation, restoration, and maintenance of significant natural and cultural-historical sites, including archeological, as well as the terrains around them.
- 10) Costs for preparation of information materials – posters, articles, radio and television broadcasts, atlases and maps of the territory, signs, and others.
- 11) Purchas of equipment and furnishing of buildings that are part of the cultural heritage.
- 12) Costs for research and development of materials for identification, documentation research, and/or preservation of the intangible cultural heritage.
- 13) Expenses for holding festivals, fairs, organizing exhibitions, seminars
- 14) Costs for building partnerships and networking between different cultural institutions/ museums, museum collections, community centers, municipalities, non-governmental organizations, and individuals.

15) General expenses related to consultations, research, strategies, fees for legal services, architects, engineers, product development, development and implementation of management systems, development and distribution of advertising and information materials, acquisition of patent rights and licenses, fees and costs necessary for the preparation and implementation of project activities in the total amount of 12 % of the eligible costs.

16) Consultations before the project studies, preparation and completion of the package of application documents and consulting services related to the implementation and reporting of the project activities until the payment of aid, may not exceed 5% of the eligible costs.

Financial assistance for preliminary costs related to the preparation of a draft proposal shall be provided only in cases where they have been incurred not earlier than one year before the date of application.

Financial parameters for the projects:

The minimum amount for eligible costs – The BGN equivalent of 3000 euro – BGN 5867.40.

The maximum amount for eligible costs – The BGN equivalent of 200 000 euro.

The intensity of financial assistance:

The intensity is determined following the terms of the guidelines for Strategy for Community-led-local development:

- Up to 100 percent – when a recipient is a public person, community centre, or non-profit legal entity and the project does not generate income according to “Cost-benefit analysis (financial analysis)”, prepared according to a model approved by the executive director of the Agriculture Fund;

- Up to 70 percent – when a recipient is a public person and the project generates income according to the presented “Cost-benefit analysis (financial analysis)”, prepared according to a model approved by the executive director of the Agriculture Fund;

- Up to 60 percent – when a recipient is a private person;

- Up to 70 percent – when a recipient is a private person and the project is in the public interest.

Amount of financial support:

Up to the BGN equivalent of 35,000 euro for one project – 68, 453 BGN.

Criteria for the selection of projects and their weight

No.	Criteria for selection	Points
1	The project leads to the establishment of the territorial identity by creating a local tangible and/or intangible tourist product/or local event	10
2	The project aims to study, preserve, restore and renew the cultural and/or natural heritage on the territory of the Local Initiative Group (LIG)	10
3	The project is implemented in settlements of the two municipalities	25
4	The project includes restoration, protection, and strengthening of biological diversity in areas of high nature, including in areas of the European nature network 2000	20
5	The project includes the development of tourist and/or interpretation programs and training of guides and animators for their implementation	10

6	The project includes activities carried out through innovative, integrated, and interactive approaches	15
7	The project promotes social and cultural interactions in a multicultural environment and includes activities with the participation of representatives of all ethnic groups in the territory	10
	TOTAL	100

The operational program “Science and education for smart Growth” 2014-2020 (European Social Fund)

MEASURE 3.9. “I’M LEARNING TO SUCCEED”

Compliance of the measure with investment priority and contribution to a specific objective:

The measure is within the scope of an operation entitled “Ensuring access to quality education in small settlements and hard-to-reach areas, on which “Operational program “Science and Education for Smart Growth” support strategies for Community-led local development. The operation is on priority axis 3 “Educational environment for active social inclusion”, Investment priority 9.ii Social-economic integration of marginalized communities, such as the Roma ethnic group. The specific objective under the Investment priority IP9.ii is: Increasing the number of children and students from marginalized communities including the Roma ethnic group. The main goal of the operation is: to support the social inclusion of children and students from marginalized groups by improving their access to quality education.

Specific objectives: Improving the quality of pre-school and school education, including vocational education, in small settlements; reducing the number of those not covered by the education system, school dropouts, and early school leavers.

Purpose of measure 3.9 from Community-led local development: To improve access to quality education and promote the social and educational integration of children and young people from marginalized groups. To reduce the share of early school leavers and to increase the educational status as a sustainable trend on the territory of the Local Initiative Group (LIG).

Target groups and identification of their problems, which the measure addresses:

- **Children and students from marginalized groups, including the Roma ethnic group;**
- **Guardian parents from marginalized groups, including the Roma ethnic group.**

Determination: According to methodology (system of criteria) for determining affiliation to marginalized groups, developed by the Ministry of Education and Science following the definition of marginalized groups, given in the partnership agreement of the Republic of Bulgaria for the

programming period 2014-2020. To achieve the integration effect of the project activities are eligible costs for children and their parents/guardians who are not representatives of the marginalized groups.

Identified problems targeted by the measure:

In the performed researches and analysis on the territory of the **following problems and needs of the target groups** have been identified, which the measure addresses:

- To develop services that integrate children and young people from marginalized minority group into the educational process, to reduce the share of early school leavers, and to increase the

educational status as a sustainable trend;

- To develop prevention measures and support services for families at risk to reduce the risk of abandonment of children due to poverty, unemployment, poor living conditions.

- To identify children, victims of domestic violence, and families with aggressive behaviour of parents through kindergartens, schools, and NGOs.

- To use the resources of the educational system and the tendency of the development of extracurricular activities for the prevention of aggressive behaviour.

- To support with additional qualification the schools themselves, especially in the small settlements for extracurricular activities, such as prevention of aggression. The most important is the need to provide services for prevention against early school leaving, as the implementation of such projects and active work with children from marginalized and minority groups and their families would make a significant contribution to solving the problems and the needs described above. It is necessary to include representatives of the environment – teachers, classmates, and residents for tolerance and support instead of social exclusion.

Eligible applicants/beneficiaries: Kindergartens; Schools (including vocational schools) from the territory of LIG; Municipalities from the territory of LIG. Eligible applicants apply with only one project proposal under this measure.

Eligible Partners: Non-profit legal entities for public benefit, according to the law on non-profit legal entities, registered and operating in the territory of LIG at least 12 months before the deadline for submission by LIG of strategy for community-led local development with multi-fund financing.

In their role as partners, non-profit legal entities can only spend money on non-profit activities. The lead organization and the partners (including non-profit legal entities) must sign a partnership agreement in which they describe in detail the role and responsibilities of the lead organization and the partners, as well as the method of selection of each project partner. All projects must be implemented following the municipal plans for integration of Roma ethnic group on the territory of the municipality and other strategies, plans, and programs, implemented on the territory of the respective municipality in the scope of the strategies for community-led local development of the LIG.

The partnership is mandatory for eligible beneficiaries.

Eligible activities:

- 1) The activities of the operation must be performed in educational institutions on the territory of LIG, in which there are children and students from marginalized groups.**

- 2) Eligible activities should be implemented for the first time or have a complementary and/ or upgrading effect, compared to similar activities funded by the national budget, the EU budget, and other donor programs.**

Under measure 3.9 “I’m learning to succeed”, operation program, Science and education for the intelligent growth will support project activities for eligible applicants, carried out within the educational process itself and the accompanying additional activities in educational institutions:

- Activities to improve the educational environment-furniture and equipment for schools in need, provision of consumables, materials, entertainment equipment, entertainment sports,

library and information, and communication technologies;

- Activities facilitating access to education for marginalized communities, such as transport and food where applicable;
- Activities to encourage parents as direct participants in the educational process of adolescents;
- Activities supporting overcoming negative public attitudes towards marginalized groups;
- Activities for joint initiatives for different ethnic groups to prevent dropping out of pre-school, school, and vocational education.

Financial framework and duration of projects:

The budget of the measure: The total budget under the measure is BGN 586 750

Financial parameters of the projects:

The maximum amount of eligible costs for one project is 200 000 euro or BGN 391 166.

The minimum amount of eligible costs for one project is BGN 50 000.

The intensity of the financial assistance: The intensity of the assistance is 100 % – No co-financing by the beneficiaries is required.

Amount of financial assistance: The maximum eligible amount of the grant for one project is BGN 100 000.

Minimum assistance scheme: The grant under the measure does not constitute state assistance within the meaning of Article 107 of the Treaty on the Functioning of the European Union according to the case-law of the European Court of justice and Communication from the European Commission of July 2016 on the concept of state assistance referred to in Art 107 para.1 from Treaty on the functioning of the European Union, public education organized within the national education system, financed and controlled by the state, Is considered a non-economic activity.

Duration of projects: Duration of projects funded by strategies for Community-led local development from operational program Science and education for smart growth is no more than three years for each project.

Project implement strategies for community-led local development with measures from operational program Science and education for smart growth: 2017-2023. The envisaged deadline for implementation of the project activities to strategy for community-led local development is until 30th of June 2023 when such a deadline is provided.

Categories of eligible costs:

I. Staff costs/participants in the implementation of the activities

1. Remuneration costs (including additional material incentives), as well as social security and health insurance contributions at the expense of the insurer following national law.

2. Expenses for business trips/travel, daily, accommodation of the staff included in point 1, according to the ordinance for business trips in the country.

3. Travel expenses for persons from the eligible target groups (except in cases where organized transport is provided).

II. Material costs

1. Expenses for stationery and office supplies

2. Costs for didactic materials (textbooks, aids, teaching, and sports aids, etc.)

3. Equipment and furniture costs (assets below the materiality threshold).
4. Fuel costs (for official transport of the organization –beneficiary for the implementation of project activities).

III. Costs for services

1. Costs for organized transport in the implementation of project activities, where applicable.
2. Overheads for the premises where the project activities will be implemented (costs for electricity, cold water, heating, cleaning, etc.).
3. Costs for building an educational Information and communication environment (cabling, of rooms/ offices connection of a server with computers in a network, etc.). In schools and kindergartens.
4. Insurance costs for persons from the eligible target groups, where applicable.
5. Expenses for meals in kindergartens and schools.
6. Information and communication costs.

IV. Expenses for conducting and participating in events

1. Expenses for organizing and conducting events for the persons from the target groups.
2. Expenses for participation in events of the persons from the target group.

V. Indirect costs

1. Remuneration costs of the project organization and management team, including social security and health insurance contributions at the expense of the insurer following national law.
2. Expenses for business trips of the team for the organization and management of the project, according to the ordinance for business trips in the country.
3. Expenses for stationery and office supplies.
4. Overhead costs when using an office for project administration (costs for electricity, cold water, heating, etc.).
5. Costs for renting an office for project administration.

The supplier of goods and services necessary for the implementation of the activities under the measure will be selected under the Public Procurement Act of Chapter Four of the management activities under the law on the management of European Union funds and the relevant by-laws, based on open transparent and non-discriminatory procedures.

After approval of national methodologies for determining the amount in the forms referred to in Article 55, paragraph 1, point 2-4 of the Law for management of the funds from the European Structural and Investment Funds – Simplified reporting of costs in the application conditions will be described for which of the eligible categories of costs the simplified reporting will be applied.

Ineligible costs: are described in the general conditions for all measures.

The demarcation between programs and measures: Described in general terms for all measures.

Project selection criteria:

Criteria for a methodology for the technical and financial evaluation of a project proposal under a project selection procedure from LIG, when implementing measures from an operational program Science and education for intelligent growth in strategy for Community-led local development. The total number of points according to the criteria is 100, and to be ranked, the project must have received

at least 60 points, distributed according to the instructions of the operational program Science and education for smart growth to the methodology. In connection with the objectives and priorities of the strategy, the projects will be evaluated according to criteria prepared by LIG:

Specific criteria – a total of 30 points:

- The project includes activities to encourage parents as direct participants in the educational process of adolescents – **10 points**
- The project includes activities supporting overcoming negative public attitudes towards marginalized groups -**10 points**
- The project includes activities for joint initiatives for different ethnic groups to prevent dropping out of pre-school, school, and vocational education – **10 points.**

OPERATIONAL PROGRAM “HUMAN RESOURCES DEVELOPMENT (EUROPEAN SOCIAL FUND)

MEASURE 1.7. “ADAPTING WORKERS AND ENTREPRENEURS TO CHANGE, INTRODUCING SOCIAL AND NON-TECHNOLOGICAL INNOVATIONS IN ENTERPRISES”

Compliance of the measure with the investment priority of the program and the contribution and with a specific objective of an operational program for human resources development:

The measure is developed within priority axis 1 “Improving access to employment and quality of jobs” from the operational program for the development of human resources for the period 2014-2020 following investment priority 7 “Adapting workers, enterprises, and entrepreneurs to change”. Measure 1.7 contributes to the strategic goal: “Increasing the number of employees in enterprises with new systems, practices, and tools for human resources development and improving the organization and working conditions”.

Purpose of the specific measure from the strategy for community-led local development:

Goals: Improving the organization and working conditions in local enterprises by introducing new models and systems, knowledge transfer to introduce good practices that improve resource efficiency, productivity, and competitiveness. Raising the entrepreneurial culture and the level of knowledge and skills of employers and workers, employees, and self-employed persons, for the organization of labour and work processes, including through Nano-technological innovations. Implementation of social innovations in enterprises aimed at safe and healthy working conditions, as well as improvement of systems in the field of human resources management. Building skills for adaptability to the changing conditions of the economic and market environment.

Justification: This measure is “horizontal” for the strategy for community-led local development, integrating with investment measures under priority 3. Stimulating entrepreneurship and innovation, increasing the competitiveness of the local economy as a generator of employment and income, but will also contribute to achieving the objectives of priority 3. Development of human resources and improvement of education, qualification, and social interactions in the multicultural community. In this way, complementarity and synergy are coordinated between the measures funded by Rural Development program, /European Agricultural Fund for Rural Development/, and Operational Program for Development of Human resources / European Social fund/.

Target group/s and their identified problems that the measure addresses:

- **Employed persons, including employed and self-employed persons from the territory of LIG;**
- **Employers from the territory of LIG.**

These are the target groups that have been identified as being affected by this measure.

The problems and needs that the measure addresses are related to: the need to improve employment conditions in enterprises, including the organization of work and the state of the workplace, to make them more attractive to workers and young people looking for alternative solutions in larger cities.

The measure will counteract migration processes and depopulation of the territory. Flexible forms of employment can contribute to the longer stay of older people with experience, which is very much needed. The alternative to high unemployment in the territory is promoting entrepreneurship and self-employment. Another problem that the measure addresses are the low management and entrepreneurial culture, another problem that the measure addresses is the low management and entrepreneurial culture, the lack of knowledge and skills regarding the effective forms of labour organization and work processes in enterprises, as well as non-compliance with legal rights of employees and non-compliance with regulatory requirements regarding work and rest regimes, safe and healthy working conditions. The measure will seek new approaches to overcoming the informal economy and promoting occupational and geographical mobility.

Unfair competition, because of the informal economy, impairs the adaptability of enterprises to change. Working in the grey sector also harms workers by limiting their employment and insurance rights and their ability to find better quality work. Surveys of the territory show that some of the economic activities are still in the so-called “shadow economy” and some of the workers find themselves in a situation of undeclared employment in one form or another.

It is not permissible for the same representatives of target groups to be involved in the same activities or to receive the same services financed from different sources – another project, program, or any other financial scheme deriving from the national budget, the budget community, or another donor program.

Eligible beneficiaries of the measure. Why these types of beneficiaries were selected?:

Organizations providing mediation services on the labour market; Employers; Training organizations; Information and career guidance centers, NGO’s. The selection of eligible beneficiaries of the measure was made based on studies and analyses of the situation, the identified needs of the target groups and the attitudes of the stakeholders, as well as the stated intentions of local actors, including target groups and potential beneficiaries of the measure. Applicants must:

- Meet the requirements for granting minimum aid following the applicable legislation – Regulation 1407/2013;
- Have financial capacity, which is assessed according to the methodology for the assessment of the financial capacity provided by the managing authority of the operational program for human resources development.

Eligible partners: Partnerships are possible but not mandatory. The partners as a type of organization coincide with the ones indicated as eligible candidates.

Eligible activities, required for the implementation of the measure:

Types of eligible activities are selected from item 2.A.6.1 “Description of the types and examples of actions” of priority 1 in the text of operational program Development of human resources 2014-2020. For the projects, activities are selected that are directly necessary to achieve the goals and results.

Exemplary eligible activities: Providing training for managers of local enterprises and entrepreneurs to improve their management and entrepreneurial skills; Providing on-the-job training; Support for practices and provision of services to employees and employers in order to prevent or mitigate the effects of economic restructuring; Support for promoting the professional and geographical mobility of employees; Support for practices for the introduction of flexible forms of employment; Support for practices to improve human resources management systems in enterprises, with a focus on practices for sustainable integration of young people in the workplace, easier reconciliation of work, family and private life, as well as prolonging the working life of older employees; Support for practices for introduction of innovative productive and “Green” models for labour organization in enterprises; Including the provision of safe and healthy working conditions the improvement the occupational and health status of employees and the improvement of the social climate; Support for practices aimed at promoting the protection of labour, social security and social rights of employees, equality and equal treatment in the workplace; Support for practices aimed at developing corporate social responsibility; Support for practices aimed at combating gray and undeclared employment.

When preparing a project to take into account the following specifics:

The funds allocated must be spent in compliance with the principles of economy, efficiency, and effectiveness. Investments to contribute to the achievement of the indicators of the community-led local development strategy and the human resources development operational program.

The activities should be aimed at acquiring knowledge and creating appropriate skills for the target groups, oriented to the specific demand of the labour market and the needs of employers for a labour force with certain characteristics. To substantiate the connection between the goals set in the project, the activities planned for implementation, and the expected results, as well as the connection between the result and the costs necessary for its achievement. To ensure sustainability for the achieved results and after the completion of the project.

The budget of the measure: The total budget planned for the measure is **BGN 469 400**.

Financial aid intensity: The maximum aid intensity: The maximum aid intensity is up to 100% of the total eligible costs.

Financial parameters of the projects:

The minimum amount of the project, for which an application is submitted cannot be in the amount of the grant, lower than BGN 30 000.

The maximum amount, of the total eligible costs for each project, is within BGN 391 166 if it includes co-financing by the applicant for the difference over the eligible amount of the grant.

Amount of financial assistance: The maximum allowable amount of the grant for one project is **BGN 100 000**.

Eligible costs: Are determined based on the requirements of Chapter 5, section 1 of the law on Management of the funds from the European structural and investment funds and decree of the

council of Ministers 189/28.07.2016. for adopting the national rules on eligibility of expenditure under operational programs, co-financing by the European Regional Development Fund, the European Social Fund, the Cohesion Fund of the European Union and the European maritime and fisheries fund, the provisions of Regulation No.1303/2013, regulation No.1304/2013, regulation No.966/2012 and the applicable national legislation for the financial framework 2014-2020. To be eligible, costs must simultaneously meet the conditions of Chapter 5, section 1 of the European Structural and Investment Funds Management Act.

Types of eligible costs are presented in the following non-exhaustive list:

Equipment and furniture costs; for software; for labour, etc. remuneration, scholarships and other income of individuals for activities directly related to the implementation of the financing agreement, including social security contributions accrued on behalf of the insurer on the agreed remuneration, *according to national law*; for business trips/according to the ordinance for business trips in the country/; Expenses for materials and consumables necessary for the implementation of the activities under the financing agreement; the costs for scholarship and other income paid by third parties for the benefit of participants in an activity; Costs related with the participation of people with disabilities. Project management, information, and publicity activities are eligible, in compliance with the requirements of the operational program for human resources development.

Ineligible costs: Expenditure financed by another operation program or any other financial scheme, deriving from the national budget, the community budget, or any other donor program; Fines, financial sanctions and dispute resolution costs; Commissions and foreign exchange losses on foreign exchange; Value added tax, except where it is not recoverable; Purchase of tangible fixed assets – second hand; The cost of guarantees provided by a bank or other financial institution, excluding the cost of financial instruments; Interests on debts other than grants awarded in the form of interest rate subsidies or guarantee fee subsidies; Interest rate subsidies under approved state aid schemes and financial transaction costs; Costs for the purchase of infrastructure, land and real estate; Expenses for consulting services related to the preparation and/or completion of the application documents for applying for financial support. On the grounds of Art.57 para.2 of the Law on Management of Funds from the European Structural and Investment funds, project costs are not eligible, regardless of whether all related payments are made by him.

Project selection criteria:

Basic criteria – up to 100 points

The criteria for technical and financial evaluation, approved by the monitoring committee of the operational program for Human Resources Development 2014-2020, will be applied for project evaluation. Projects will receive additional points from evaluation according to

Specific criteria – up to 30 points

- The project introduces social or non-technological innovations – **10 points**
- The project covers target groups from both municipalities – **10 points**
- The project introduces “greener” models for a labour organization in enterprises; including for ensuring safe and healthy working conditions – **10 points**

Minimum aid scheme:

The measures under the operational program for Developing of Human Resources will be

implemented following the rule of (de minimis) within the meaning of Commission Regulation (EU) No. 1407/2013 of 18th December 2013 following the implementation of Art.107 and Art.108 from the Contract for the functioning of European Union to the (minimal support), published in the Official Journal of EU L 352 from 24th of December 2013.

In this regard, it should be borne in mind that applicants and/or partners are not eligible to receive minimum aid if they fall under the prohibitive aid regimes following Regulation (EU) No. 1407/2013.

OPERATIONAL PROGRAM FOR DEVELOPING OF HUMAN RESOURCES (EUROPEAN SOCIAL FUND) MEASURE 2.1. “SOCIAL-LABOR AND HEALTH INTEGRATION”

Compliance of the measure with the investment priority of the program and the contribution and to a specific goal of the operational program for Human Resources Development:

The measure was developed under Priority Axis 2 “Poverty Reduction and Promotion of Social Inclusion” of the Operational Program for Human Resources Development for the period 2014-2020 following investment priority 1 “Social-Economic integration of marginalized communities such as the Roma ethnic group”. The measure contributes to thematic objective 9, priority axis 2: “Promoting social inclusion and reducing poverty”, to achieve a specific goal: Specific goal, Increasing the number of people from vulnerable ethnic communities, involved in employment, education, training, social and health services with a focus on Roma ethnic group, migrants, participants with originating in other countries”.

Purpose of the specific measure of the strategy for community-led local development:

Improving access to employment, social, and health services for the social inclusion of representatives of vulnerable, ethnic, and marginalized groups and creating conditions for overcoming negative stereotypes in the community.

The purpose of measure 2.1. “Social labor and health integration” is linked to specific objective 2 of the strategy for community-led local development: “Poverty reduction, support for social inclusion and better quality of life for vulnerable and minority groups” under priority 3: “Development of Human Resources and improvement of education, qualification and social interactions in the multicultural community”. The measure also achieves the strategic goal in the part “**improving living conditions, social and labour realization**”.

Target group/s and identification of their problems that the measure addresses:

1. Representatives of Roma ethnic group community in the municipalities of Glavinitsa and Sitovo, and other ethnic groups in a situation of vulnerability and marginalization; 2. People at risk and/or victims of discrimination; 3. People inhabiting areas, including low population density, rural and isolated areas, parts of settlements where is a concentration of problems creating a risk of poverty, social exclusion, and marginalization (high unemployment, low income, limited access to public services, territorial segregation, spatial isolation, etc.).

It is not permissible for the same representatives of the target groups to be involved in the same activities or to receive the same services financed from different sources – another project, program, or any other financial scheme deriving from the national budget, the community budget, or another donor program.

The measure addresses the studied needs, of representatives of vulnerable marginalized and

minority groups from the territory of LIG, which is among the poorest and most backward in the country and with mixed ethnic composition. It is necessary to support the most vulnerable groups, through adequate action, for integration, including in the work environment, access to health and social services. In measure 2.1. the “individual” is in focus, including his needs for social or motivational support, for work or commercial self-expression.

Eligible beneficiaries of the measure and why these types of beneficiaries were selected:

Social and Health care providers; Employers; Training organizations; Municipalities; Community centers; NGOs; Social enterprises and cooperatives for people with disabilities.

Selection of eligible beneficiaries under the measure was made based on studies and analyses of the situation and the environment, the needs of target groups, and the attitudes expressed by the participants, including potential candidates.

Applicants must meet the following mandatory criteria:*

To meet the requirements for granting minimum aid, following the applicable legislation – Regulation 1407/2013; *To have the financial capacity, which is assessed according to the methodology for the assessment of the financial capacity provided by the managing authority of the operational program for human resources development;

*When the applicant is a municipality and it is applying with a partner(s) or a project partner is a municipality, the project proposal shall submit a decision of the municipal council for submission of a project proposal and a decision of the municipal council for approval of a municipal cooperation agreement with the application partner, project according to Art. 59 from the Law of Local Self Government and Local Administration.

Eligible partners: Partnerships are possible but not mandatory. Partners as a type of organization coincide with those listed as eligible candidates.

Eligible activities required for the implementation of the measure:

Types of eligible activities are selected from item 2.A.6.1 “Description of the types and examples of actions” from priority 2 in the text of operational program for Developing of Human Resources 2014 – 2020. For the projects, activities are selected that are directly necessary to achieve the goals and results.

Direction “Improving access to employment”

- Encouraging employment of economically inactive people;
- Professional information and consulting;
- Motivational training and/or psychological support;
- Providing training for professional suitability;
- Involvement in internships apprenticeships, employment;
- Support for self-employment.

Direction “Access to social and health services”

- Improving access to and quality social and health services, including integrated and cross-sectoral;
- Social health, mediation, information, and counselling;
- Motivational training and/or psychological support;
- Support for family planning and responsible parenting;
- Increasing the health culture and access to health services;
- Support for self-employment.

Direction “Development of local communities and overcoming negative stereotypes”

- Planning, management, monitoring, and evaluation of initiatives for socio-economic integration of socially excluded people, groups, and marginalized communities;
- Community activities to change practices that harm social inclusion;
- Support for inclusion of the target groups in the processes of formation and implementation of national and local policies;
- Initiatives to promote the cultural identity of ethnic communities, including crafts and arts;
- Initiatives to overcome stereotypes.

When preparing a project to take into account the following specifics:

- ✓ The planned implementation of services should focus on the needs of those who will use the service and, not on institutions or organizations that will provide it and their current practices.
- ✓ Services should be seen as activities that can be combined according to the individual needs of people.
- ✓ It is obligatory to include activities from the direction Access to social and health services, and at least one of the other directions above;
- ✓ The project must contribute to the achievement of the indicators of the operational program for human resources development and the objectives of: National Strategy of the Republic of Bulgaria for the integration of Roma ethnic group 2012-2020. The district strategy of the District of Silistra and the municipal plans for integration of the Roma ethnic group; National Strategy for Poverty Reduction and Promotion of Social Inclusion 2020 and the municipal strategies for the development of the social services of the municipalities of Glavinitsa and Sitovo. At the project level, a link will be sought between objectives, planned activities, and expected results, as well as between the result and the costs of achieving it.
- ✓ When planning the opening of new services for social inclusion, provision must be made to ensure the sustainable provision of the service.

Brand budget: The total budget planned for the measure is **BGN 430 280**.

The intensity of financial assistance:

The maximum aid intensity is up to 100% of the total eligible costs.

Financial parameters of the project:

The minimum amount of the project, to be applied for may not be a grant amount lower than **BGN 30 000**. **The maximum amount of the total eligible costs**, for each project, is within BGN 391 166 if it includes co-financing by the applicant for the difference over the eligible amount of the grant.

Amount of financial assistance: The maximum allowable grant for one project is **BGN 150 000**.

Eligible costs:

Determined based on the requirements of Chapter 5, Section 1 of the Law on the management of European Structural and Investment funds and a decree of the Council of Ministers 189/28.07.2016. Adopting national rules on eligibility of expenditure under operational programs

co-financed by the European Regional Development Fund, the European Social Fund, and the European Union Cohesion Fund and European Maritime and Fisheries Fund, the provisions of a regulation No.1303/2013, regulation No. 1304/2013, regulation No.966/2012 and the applicable national legislation for 2014-2020 financial framework. To be eligible, the costs must meet the conditions of Chapter 5, Section 1 of the Law on the Management of European Structural and Investment Funds.

The types of eligible costs are presented in the following non-exhaustive list:

- For equipment and furniture; Software costs
- For labour and other remunerations, scholarships and other incomes of individuals for activities directly related to the implementation of the financing contract, including social security contributions accrued at the expense of the insurer on the agreed remuneration, *according to the national legislation*;
- For business trips */according to the ordinance for business trips in the country/*;
- Costs for materials and consumables necessary for the implementation of the activities under the financing agreement; Expenses for scholarships and other income paid by third parties for the benefit of participants in a given activity;
- Costs related to the participation of people with disabilities;
- Costs for managing the projects

Ineligible costs:

Expenditure financed by another operation, program or any other financial scheme deriving from the national budget, the budget of the community or other donor program; Fines, financial sanctions and dispute resolution costs; Commissions and foreign exchange losses on foreign exchange; value-added tax, except where it is not recoverable; Purchase of tangible fixed assets – second hand; The cost of guarantees provided by a bank or other financial institution excluding the cost of financial instruments; Interest on debts other than grants awarded in the form of interest rate subsidies or guarantee fee subsidies; Subsidizing interest on approved state aid schemes and financial transaction costs; Costs for the purchase of infrastructure, land and real estate; Costs for consulting services related to the preparation and/or completion of the documents for applying for financial support.

Based on Art.57, paragraph 2 of the Law on Management of European Structural and Investment Funds, no costs are eligible for projects or activities that have been physically completed or fully implemented before the submission of the application form by the beneficiary, regardless of whether all related payments have been made by the beneficiary.

Project selection criteria:

Basic criteria – up to 100 points

The technical and financial evaluation criteria approved by the Monitoring Committee of Operational Program for Human Resources Development 2014-2020 will be applied for project evaluation.

The projects will receive additional points from the evaluation of the following

Specific Criteria – up to 30 points

- The project includes activities in all 3 areas – **10 points**
- The project covers target groups from both municipalities - **10 points**

- The project has an innovative approach and/or is for integrated cross-sectoral social and/or health services and employment – **10 points**

Minimum aid scheme:

The measure is implemented following the rules on minimum aid (de minimis rule) within the meaning of Regulation (EU) No. 1407/2013 of the EC of 18.12.2013 on the application of Art.107 and Art.108 of the treaty on the functioning of the EU (Contract for the functioning of the EU) to the minimum aid, published in the official journal EU L 352 from 24.12.2013

6. Finance Plan:

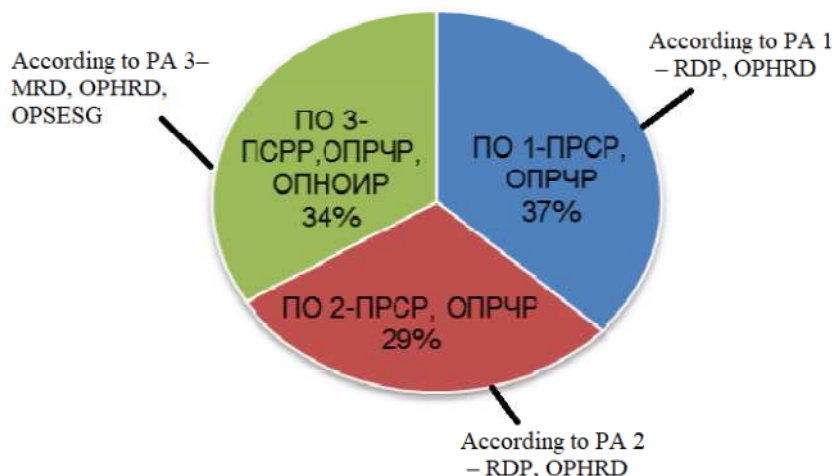
6.1. Indicative distribution of funds by programs/funds and by measures:

(no more than two pages)

Code of the measure	Name of the measure	Total for the strategy period	
		BGN	%
Measures financed by the Rural Development Program 2014-2020 (European Agricultural Fund for Rural Development)		1 955 800.00	56.82%
4.1	Investments in agricultural holdings	330 500.00	9.60%
4.1.2	Investments in agricultural holdings under the thematic sub-program for development of small farms	5920	0.17%
4.2.	Investments in processing/marketing of agricultural products	206 000.00	5.98%
6.4.	Investments in support of non-agricultural activities	294 000.00	8.54%
7.2.	Investments in the creation, improvement, or expansion of all types of small-scale infrastructure	855 580	24.85%
7.5.	Investments for public use in recreation infrastructure, tourist infrastructure	117 350.00	3.41%
Measures that are not part of the rural development program 2014-2020, but are included in regulation (EU) No.1305/2013 funded by the European Agricultural Fund for Rural Development			
	<i>Measures are not included</i>	0.00	0.00%
Measures, outside the scope of the Regulation of (EU) No.1305/2013, but in line with the objectives of the Regulation (financed by the European Agricultural Fund for Rural Development)			
19.05.	Research, preservation, and utilization of natural resources and cultural heritage on the territory of the municipalities of Glavinitsa and Sitovo	146 450.00	4.25%
Measures financed by the Operational Program Environment 2014-2020 (European Regional Development Fund)		0.00	0.00%
	<i>Measures are not included</i>		
Measures financed by the Operational Program “Science and Education for Smart Growth” 2014-2020 (European Social Fund)		586 750,00	17.05%
3.9	I study to connect	586 750.00	17.05%
Measures, financed by the operational program for Human		899 680.00	26.14%

Resources Development			
1.7	Adaptation of workers and entrepreneurs to change, the introduction of social and non-technological innovations in enterprises	469 400.00	13.64%
2.1	Social-labour and health integration	430 280.00	12.50%
Measures financed by the Operational program for innovation and competitiveness (European Fund of Regional Development)		0.00	0.00%
	<i>Measures are not included</i>		
Measures, financed by Maritime and Fisheries Program (European Maritime and Fisheries Fund)		0.00	0.00%
	<i>Measures are not included</i>		
Total for projects to the Strategy for Community led-local development strategy		3 442 230.00	100.00%

Distribution by programs/funds – sources of funding of the Community-Led Local Development Strategy (CVDM)		value in BGN	Share in%
EAFRD		1 9554 800.00	56.82%
RDP		1 809 350.00	48,31%
outside the RDP		146 450.00	4.25%
ESF		1 486 430.00	43.18%
OPSESG		586 750.00	17.05%
OPHRD		899 680.00	26.14%
Total		3 442 230.00	100%
Financial breakdown by priority areas targeted by the measures		amount in BGN	Share in%
PA 1: Local economy - measures 4.1, 4.1.2, 4.2, 6.4, partially 1.7, and 2.1.		1 266 700.00	36.80%
PA 2: Local infrastructure, environment, living and working environment – measures 7.2, 7.5, 12 of 2.1.		1 012 050.00	29.40%
PA 3: Local people – education, integration, and social life - measures: 19.05, 3.9, 12 of 2.1.		1 163 480.00	33.80%
		3 442 230.00	100%



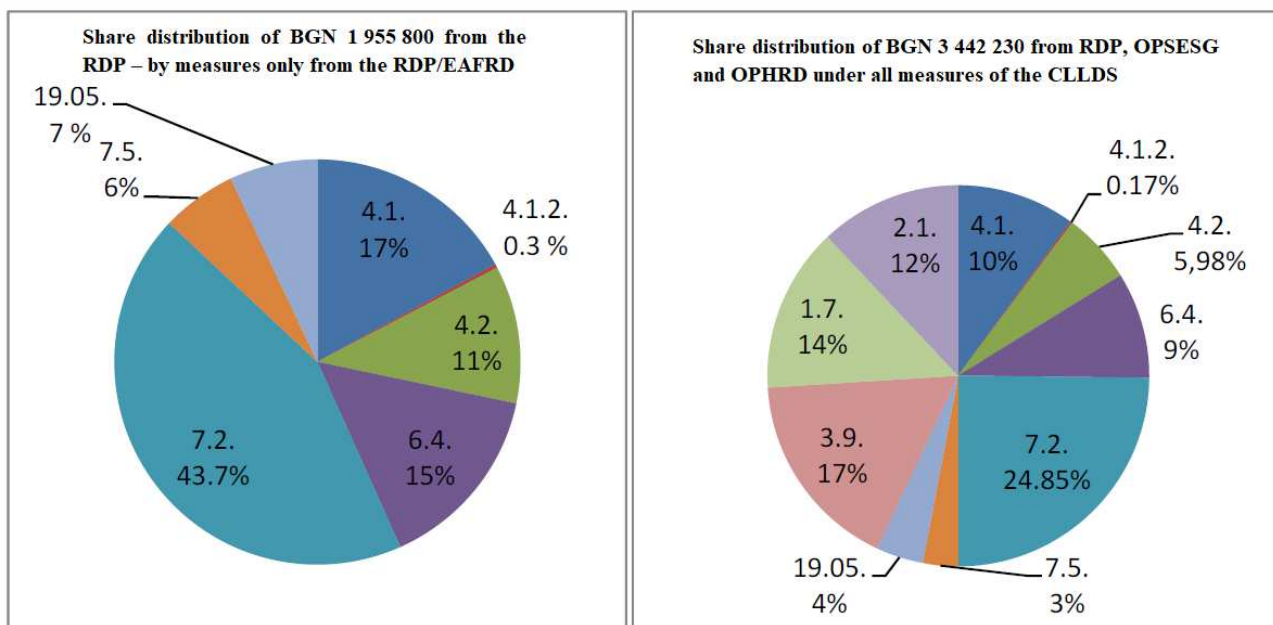
6.2. Financial justification of the budget and the distribution of funds by programs and measures

The financial table expresses the estimated distribution of the total public contribution to support future projects under the strategy in the integrated implementation of measures with different sources of funding. The total budget of the strategy is BGN 3 442 230.00, divided between three programs (Rural Development Program, Operational Program Human Resources Development, and Operational Program Science and Education for Intellectual Growth) and 10 included measures. The total public contribution for the implementation of projects from Rural Development Program 2014-2020 amounts to EUR 1 000 000, or BGN 1 955 800.00. Although as of 31st December 2016, the territory of the LIG covers a population of over 15 000 inhabitants, demographic trends show the probability that the population will decrease below this number, which is the reason for choosing a realistic option, the maximum amount of funding requested through the EAFRD should not exceed EUR 1 000 000. This financial resource represents 56.82% of the total amount for projects under the strategy and is distributed in a balanced way between 7 measures, selected following the established needs for investments and financing in the different spheres of the socio-economic life of the territory. Of these 7 measures, 6 were selected from the eligible ones of the **RDP 2014-2020**, and 1 was developed following the objectives of **Regulation (EC) No. 1305/2013**. 16.45% of the financial resources under the Strategy are directed to the needs of agriculture, which is the predominant branch of the territory, which compared to the total amount of funds under the RDP represents 27.20% of EUR 1 000 000. These funds are allocated in a way that corresponds to the type of holdings and the interest expressed by potential applicants: for measure 4.1. "Investments in agricultural holdings", under which the eligible applicants are agricultural producers with larger holdings, BGN 330 500 or 9.60% of the Strategy for Community-led local development are provided, and for the sub-measure 4.1.2. "Investments in agricultural holdings under the Thematic sub-program for development of small farms", addressed to the smaller agricultural producers – 0.17% or BGN 5920 of the total planned amount under the Strategy for Community-led local development. To the enterprises for the processing of agricultural products under measure 4.2. "Investments in processing/marketing of agricultural products" are directed at 5.58% of the total funds, representing 10.50% only of the planned amount under the RDP. According to the stated, lower interest in investments in non-agricultural activities but to promote the diversification of the local economy and modernization of existing micro-enterprises for measure 6.4. "Investments in support of non-agricultural activities" are planned BGN 294 000, which as a share represent 8.54% of the total financial resource under the strategy, and only from the funds under the RDP – 15%. For public infrastructure under measures 7.2 "Investments in the creation, improvement or expansion of all types of small-scale infrastructure" and 7.5 "Investments for public use in recreation infrastructure, tourist infrastructure" are planned respectively BGN 855 580 and BGN 117 350, which together are 28.26% of the total value of the Strategy for Community led-local development, and compared to the financial resource only from the RDP are 49.75%. The planned funds for projects under these measures meet the needs for improving the infrastructural environment in almost all 35 settlements of the territory.

Funds amounting to BGN 146 450 or 3.41% of the entire strategy (representing only 6% of the RDP funds) have been determined for the measure outside the RDP, corresponding to the objectives of Regulation No.1305 and directed to the local natural and cultural heritage. These

funds are directed to projects of community centers and non-governmental organizations on the territory, through which to bring revival to the cultural and public life.

The strategy envisages funds under two operational programs funded by the European Social Fund – OP "Human Resources Development" 2014-2020 and OP "Science and Education for Smart Growth". The total value of the planned financing from the ESF through the two operational programs is BGN 1 486 430 and represents 43.18% of the total value of the Strategy for Community-led local development. The public contribution under OPHRD amounts to BGN 899 680 (EUR 460 006.14), provided for two measures: for projects under measure 1.7. "Adaptation of workers and entrepreneurs to change" – BGN 469 400, which is 13.64% of the



total strategy and for measure 2.1. "Social-labour and health integration" – BGN 430 280, or 12.50% of the whole strategy. The funds from OP SESG are for one measure for which a need has been identified and there is interest – 3.9. "I'm learning to succeed", which is aimed at educational integration of children and youth from vulnerable, marginalized, and minority groups - BGN 586,750, or 17.5% of the total value of the Strategy for Community-led local development.

The figures present the share distribution of the planned financial resources:

The objectives of the Strategy for Community-led local development will be achieved by combining different financial sources - public funding from the EAFRD and the ESF, as well as the own participation of the applicants under the RDP measures. The intensity of support under the measures is different and varies from 50 to 100 percent if the maximum value of the subsidy is not exceeded.

Adequate financial planning is a prerequisite for successful and efficient implementation. The financial plan is developed according to a model of an indicative financial table, in which in the process of information and consultation are stated all stated intentions of potential

beneficiaries with values, and the distribution is specified in consultations and discussions with stakeholders.

The obtained financial model with the estimated monetary distribution of all applied projects is transferred as a percentage of the eligible financial resource for which the strategy is applied. The declared values of the projects were used to determine the minimum and maximum amount of financial assistance under the measures in compliance with the conditions of Community-Led Local Development. The active participation of stakeholders in planning and discussing the financial plan of the Community-led local development Strategy gives confidence in its accuracy and feasibility.

7. Action plan showing how objectives are converted into actions:

The Community-Led Local Development strategy has been developed for implementation on the territory of LIG “Glavinitsa - Sitovo Kraydunavska Dobrudzha” in compliance with the Guidelines for determining the conditions for application and the conditions for the implementation of the approved strategies for community-led local development for admission in 2017 and Ordinance No.22/14.12.2015 for implementation of sub-measure 19.2 "Implementation of operations within the strategies for Community-led local development" of measure 19 "CLLD" of the RDP for the period 2014 - 2020.

Strategy for Community-led local development has a period of validity 31.12.2020, as the final implementation of the activities of the LIG related to the implementation of SCLLD under sub-measure 19.2 and the activities for management and promotion of the Strategy under sub-measure 19.4, shall be completed not later than 30.09.2023.

The indicative period of the action plan has an initial term depending on the date of concluding the Agreement and will last less than 6 years, in indicative time limits from **01.01.2018 to 30.09.2023** (69 months), as the acceptance and negotiation of project proposals within the Strategy for Community-led local development must be completed by **31.12.2020**. *The implementation of the Strategy for Community-led local development may be completed earlier, in case the objectives and indicators for the absorption of the funds under it are met, the projects under measures are agreed upon, and the projects of the beneficiaries are implemented and reported earlier than the deadline.*

The LIG's CLLD strategy is a program and financial tool to support projects, based on a researched and justified local need. The implementation of the Strategy for Community-led local development begins after its approval and conclusion of an agreement with the Managing Authorities of the financing programs RDP, OPHRD, and OPSESG.

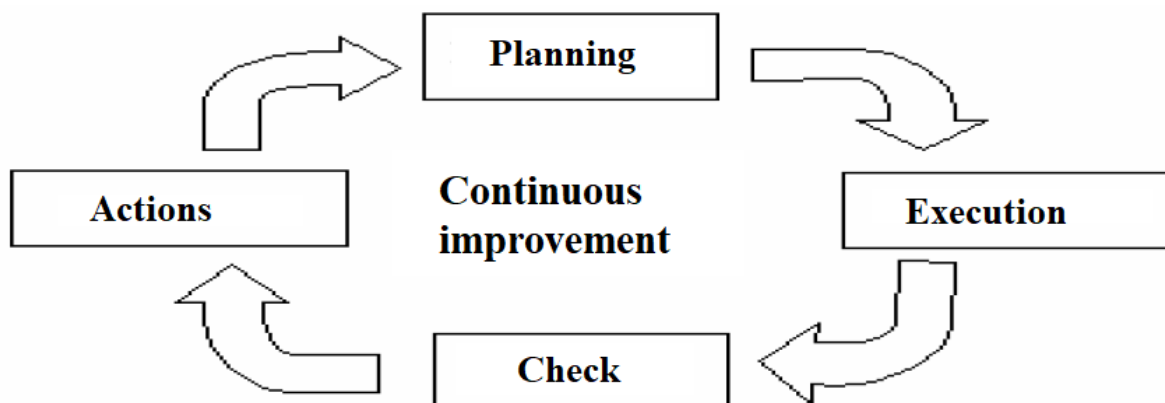
The action plan is the most important mechanism for managing the strategy implementation process. It is described in the Strategy for CLLD but must be **prepared** in the highest **degree of completeness and detail**, be **systematically implemented**, and **periodically updated** taking into account the multilateral aspects, requirements, and conditions of the environment.

Concerning the chronological aspect-time horizon of planning, there is a need to take initial, process, corrective and final actions, as well as compliance with the characteristics of “sequence” and “parallelism” of certain activities that are related, interdependent or periodic repeating.

According to their purpose, the plans /and the reports on them/ are addressed simultaneously to:

- the internal organizational environment of the LIG;
- external environment for the organization LIG.

In the internal organizational environment, the planning is performed by the Team under the leadership of the Executive Director, and the approval of the long-term action plan, annual plans, including their updates or changes, as well as the reports on their implementation, is two-stage and according to the statutes of the LIG is carried out by the Collective Management Body



- the Management Board and the Collective Supreme Body - the General Assembly.

The interaction in the external environment for the LIG is carried out through:

- Public announcement of the plans and reports on their implementation;
- Actions for submission of planning and reporting documents of the LIG in the respective Managing Authorities or institutions for notification, coordination, approval, publication on a specialized site or for verification / external monitoring, audit, etc./.:
- Initial planning for the entire period of implementation of the Strategy for CLLD.
 - Detailed planning and programming for shorter periods - Annual plan.
 - Updating/changes / of the plans to improve, either based on conclusions from the evaluation of the implementation and risk assessment in the implementation of the System for evaluation and monitoring of Strategy for CLLD, or in cases of changes in the applicable legislation.

When undertaking each planning, according to the period to which it refers, all necessary **activities for the implementation** of the strategy are included, with **identification of the necessary resources**: human, technical, informational, financial. An important source of

information for the annual planning will be the reports for the previous period, in which the degree of achievement of the goals and the indicators for implementation and result are monitored. In the implementation of the plans for implementation of Strategy for CLLD, which have a different time horizon - for the period or the year, the LIG develops and publishes **schedules, work programs, and thematic plans**, of which it is mandatory:

- 1) **Indicative annual work programs (IAWP)** for the planned project acceptances.
- 2) **Communication plan for information, publicity**, and annual programs to it.
- 3) **Schedule** of activities related to information, consulting, and training on Strategy for CLLD and its measures, with indicative dates, venue, topic (s), the target group of participants, channels for obtaining detailed information.

The LIG complies with all the requirements of Chapter II "Obligations of the parties to the agreement to implement the CLLD strategy in connection with the implementation of the CLLD strategy", Art. 62, Art. 63 et seq. of Ordinance 22/2015, including its amendments and additions.

CLLD is a method for involving partners at the local level, including civil society and local economic actors, in the development and implementation of local integrated strategies that help move towards a more sustainable future. The bottom-up direct participation process will also involve local actors in planning.

The strategic framework is structured around one main goal, based on three priorities, from which the specific goals and measures are derived. The implementation of the objectives must lead to the satisfaction of the stated needs, for which the stakeholders and local actors should be kept informed and their participation in the approach should be encouraged. The achievement of the objectives in the strategy is carried out through 10 measures, each of which is planned financial resources to support projects within the scope of the eligible activities under the measure. The Strategy for CLLD of LIG "Glavinitsa-Sitovo Kraydunavska Dobrudzha" plans co-financing from the EAFRD and ESF under 3 programs. The conditions for providing funding correspond to:

- Ordinance No.22 on the application of sub-measure 19.2. "Implementation of operations within the strategies for Community-led local development" of measure 19 "Community-led local development" of the RDP for the period 2014-2020, Chapter IV "Conditions and procedure for providing financial assistance from the CLLD Strategies“;

- DECREE No.161 of the Council of Ministers of 4th July 2016 laying down rules for coordination between the managing authorities of the programs and the local action groups, and the local fishing initiative groups in connection with the implementation of the Community Led Local Development Approach for the period 2014 – 2020.

- **THE MOST IMPORTANT STEPS IN THE LIG ACTION PLAN TO TURN THE OBJECTIVES INTO RESULTS ARE RELATED TO PROVIDING RESOURCES, CONDITIONS, AND PREREQUISITES.** This determines the need for planning targeted actions to implement:

➤ **Preparation of Indicative annual work program – for 2018, 2019, 2020;** According to the provisions of Ordinance 22/2015, the LIG prepares and publishes the IAWP for the planned admissions by 30th November of the previous year. Following the Minimum Requirements, developed based on Decree of the Council of Ministers 161/2016, the deadline for

announcing, discussing, and coordinating with the Managing Authority of the IAWP OP for the multi-fund strategies is 30th August of the previous year. The LIG will comply with the requirements and conditions applicable to the specific strategy following the agreement with the Managing Authority and the current legislation.

➤ **Organizing receptions and evaluation of project proposals under the Strategy;** From the beginning of 2018 to the end of 2020, following the IAWP, will be organized the acceptance of project proposals with which the local beneficiaries will apply for funding, following the announced Guidelines for applications and the models to them in the Information System for management and monitoring of EU 2020 funds, within the available budget for measures set out in the financial plan.

This activity requires the LIG to take the following actions:

- To develop, coordinate, approve and disclose a Procedure for selection of project proposals financed by the EAFRD to the CLLD Strategy for the LIG, which is being implemented

under the terms and conditions of Section I "Selection of projects to the CLLD strategy" of Chapter Five of the Council of Ministers Decree No. 161, following the provisions of Article 45 of Ordinance 22/2015;

- To announce the acceptance of projects under the measures in strict compliance with the requirements of Article 46 of Ordinance 22/2015 and to implement the actions related to the adoption to develop Guidelines for application for each of the measures, as well as the relevant sample documents to them; preparation in the Information System for Management and Monitoring of the project of a procedure for acceptance of projects following the approved announcement under Art. 46, para. 1 of Ordinance 22/2015 and the Guidelines for application, including the relevant documents under Annex No. 11, in compliance with the deadline for informing by letter the Managing Authority of the RDP 2014 - 2020.

- On the base of the approved Strategy for CLLD, the included in it measures for financing by OP / European Structural and Investment Funds / and the approved IAWP, the functions delegated to the LIG under Art. 42 of Decree of the Council of Ministers 161/04.07.2015 on approval of guidelines and/or other documents by the order of art. 26, Para. 1 of the Law for management of the funds from the European Structural and Investment Funds, in compliance with the instructions of the Managing Authority of the financing programs, to prepare draft Guidelines for application according to approved standard form, which includes conditions for application and conditions for the implementation of approved projects. the appendices to them and with indicated criteria and methodology for evaluation of the project proposals. Depending on the specifics of the specific procedure, the LAG also prepares all relevant additional annexes, which must be submitted to the project proposal or must be submitted by the applicants.

- To plan, announce, and organize the process of informing, consulting, and supporting the preparation of projects. To maintain a record-keeping system and archive, from which to be traced the acts of the bodies of the LIG, to inform, consult and support the preparation of projects of potential candidates and perform all other activities specified in Art. 62, Section II of

Ordinance No. 22 / 2015.

- To select external expert evaluators and to conclude contracts with them;
- To appoint with an internal administrative act a Commission for selection of projects / Commission for selection of project proposals for each acceptance of projects and to organize its activity;
- To conduct each procedure for acceptance and selection of project proposals following the provisions of Article 46 et seq. To Article 60 of Ordinance 22/2015;
- **Maintenance of a record-keeping system and archive, from which the acts of the bodies of the LIG can be traced, incl. electronic archive and information on the site;**
- **Assisting the beneficiaries in the implementation and reporting of projects;**
- **The current implementation of the System for monitoring and control of the implementation by planning and documenting in detail the activities for the respective period;**
- **Preparation of annual progress reports on the implementation of the Strategy, monitoring reports, and final implementation report;**
- **Ensuring monitoring and control of the sustainability of supported projects up to 5 years after the completion of activities and payments.**

In implementing the action plan, the LIG will respect the horizontal principles of equal opportunities, equality, non-discrimination. The procedures and objective criteria for selection of projects to the CLLD strategy to be applied by the LIG are non-discriminatory and transparent (as required in Section I "Procedure for selection of projects to the strategy for CLLD of the LIG"). The selection of projects will be carried out through the selection criteria defined for each measure and following a transparent and previously announced to all potential beneficiaries procedure.

When planning the activities, the LIG determines responsibilities and deadlines, which are subject to update in case of normatively justified necessity:

Project acceptances are planned and implemented before the deadline of 31st December.2012, and the implementation of the agreed projects under the rule for the programming period n + 3 years, but not later than 30.06.2023 at a project level, and not later from 30.09.2023 for the strategy.

The admission period is determined by a decision of the Board of the LIG but is not shorter than 1 month.

EAFRD-approved projects are implemented within 24 months of:

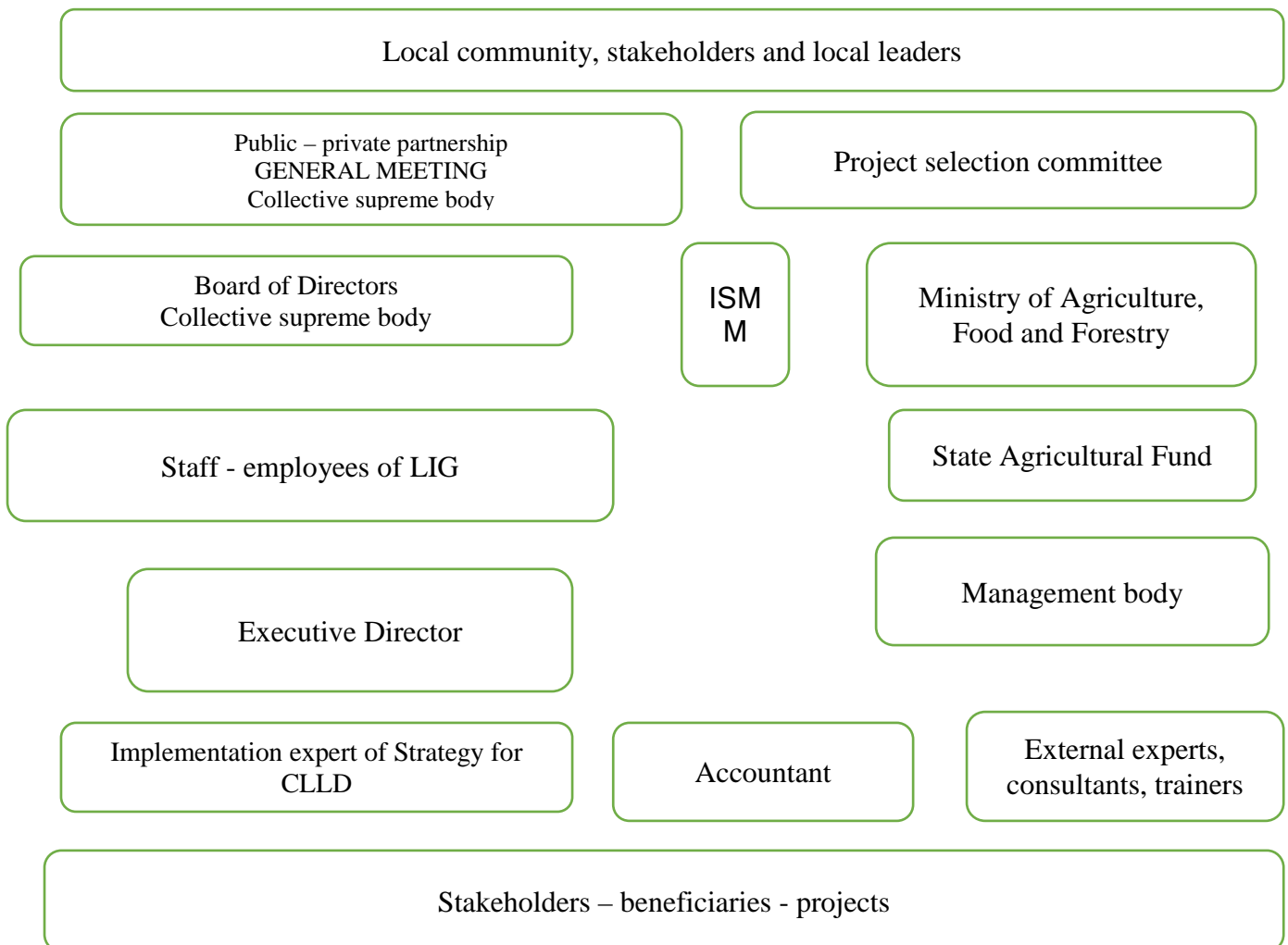
- the date of signing the contract for providing financial assistance with the State Fund of Agriculture - for candidates who are not contracting authorities within the meaning of the Public Procurement Act;

-the date of notification of the recipient of financial aid for the decision for coordination/refusal for coordination of the last during the procedure for selection of a contractor under the project, when the recipient is a contracting authority under the Public Procurement Act. LIG Glavinitsa-Sitovo Kraydunavska Dobrudzha and the recipients of financial assistance in the implementation of the CLLD strategy **will ensure information and publicity of their activities and sources of funding following the requirements set out in the Unified Manual of the Beneficiary for Implementation of Information and Communication Rules 2014 -2020,**

according to Annex No.2 of the National Communication Strategy for the programming period 2014-2020 and in compliance with Article 86 of Ordinance No. 22/2015.

8. A description of the strategic management and monitoring framework, which shows the capacity of the local action group to implement the strategy, and a description of the specific evaluation framework:

8.1. Organization structure of the LIG:



8.2. Management of LIG:

<p><i>Management and control bodies</i></p>	<p>The governing bodies of the LAG, according to the Statute of the Association are: Supreme Collective Body - The General Assembly of the Non-profit association LIG "Glavinitsa-Sitovo Kraydunavska Dobrudzha" in which natural and legal persons are members. The members meet the conditions for the natural persons to have a permanent address or to work on the territory of the municipalities of Glavinitsa and Sitovo, and the legal entities to have a seat and address of management on the territory of the LAG, coinciding with the administrative-territorial borders of the municipalities of Glavinitsa and Sitovo from Silistra district.</p> <p>The members of the General Assembly are representatives of the public, commercial and non-profit sectors of the territory, as part of the public-private partnership on which the LIG is based.</p> <p>At the time of preparation and application with the strategy and at the last court registration of Non-profit association LIG "Glavinitsa-Sitovo Kraydunavska Dobrudzha", the General Assembly consists of 35 members, of which 3 are representatives of the public sector, 16 - the business sector and 16 - to the non-profit sector. The number of representatives of any of the sectors does not exceed 49% of the total number of members. The ratio between the three sectors in the General Assembly of the LIG is as follows: Public sector - 8.6%; Non-profit sector -45.7%; Business sector -45.7%.</p> <p>In the General Assembly of the Association LAG "Glavinitsa-Sitovo Kraydunavska Dobrudzha", there are members from 23 settlements, which represent 65.7% of the total 35 settlements included in the administrative-territorial boundaries of the two municipalities.</p> <p>In the composition of the collective supreme body of the LIG are represented with one or more representatives 13 of a total 14 identifies in the surveys stakeholders of the Strategy for CLLD, including from the Public Sector – the two municipalities of the territory, an educational institution; Non-profit sector – 3 Non-government organizations, 7 community centers, 5 active citizens and 1 citizen – a representative of vulnerable Roma minority group; Business sector – 2 enterprises for primary processing of agricultural products; 1 production microenterprise; 5 companies in the field of trade and services, including 1 in the field of communication technologies and internet services; 7 agricultural producers, including 2 are companies with larger farms and 5 agricultural producers individuals with smaller farms.</p> <p>The General Assembly adopts all important decisions related to the</p>
---	---

	<p>activities of the Association, described in the Articles of Association. The Management Board (MB) manages the current activities of the LIG between two general meetings.</p> <p>The supreme governing body of the non-profit association "LIG Glavinitsa-Sitovo Kraydunavska Dobrudzha" is the Management Board. The Management Board has 7 members (seven members), and its members are elected by a decision of the collective supreme body - the General Assembly among the members of the Association and meet the same conditions for individuals and legal entities as all members of the General Assembly.</p> <p>The distribution of the Management Board of the Association by sectors is as follows: One representative of the Public Sector / PS /; three representatives of the business sector / BS / and three representatives of the non-profit sector / NPS /. None of the sectors represented in the Management Board exceeds 49% of the total number, as the ratio is as follows: a total of 7 members of the Management Board, of which representatives of the Board of Directors 1 member - 14.28%; representatives of BS 3 members - 42.85%; NPS 3 members - 42.85%.</p> <p>The Chairman of the Management Board, elected by the General Meeting from among its members, represents the Association under the Statute and the court decision and manages its activities. The Chairman of the Board is the representative of the Municipality of Sitovo in the General Assembly and the Board of the Association.</p> <p><i>/ Annexes: Statute of the LAG, List of the members of the collective supreme body and the collective managing body of the LAG; documents proving the affiliation of the members to the respective sector and interested party.</i></p>
<p><i>Description of the positions and requirements to the executive director and staff</i></p>	<p>Executive team - employees of positions approved by the Management Board and selected following the pre-announced requirements, which with secured funding are appointed on an employment contract. For the implementation of the strategy, three working positions for the LIG Team have been approved: executive director, strategy implementation expert, and accountant.</p> <p>Position in the Team: Executive Director</p> <p>The Executive Director manages and organizes the overall activities of the Team and the office of the Association following the statutes, regulations, and internal order in compliance with all applicable regulations. It has obligations to implement the decisions of the Management Board and the General Assembly, as well as the orders issued by the Chairman of the Management Board. It has powers and responsibilities according to the statute and the decisions of the General Assembly and the Management Board, described in the court</p>

decision. His main responsibilities are related to the management of human, financial, and material resources of the Association. The main responsibilities of the ED are related to the consistent implementation of the activities for the implementation of the CLLD strategy and the organization of the procedures for the acceptance, evaluation, and monitoring of the project proposals. Responsible for achieving the goals and performance indicators. Organizes the activities for the functioning of the office and awarding public contracts in the implementation of the budget, allocates tasks to staff, maintains communication with the Managing Authority of the programs financing the Strategy for CLLD, with SFA and institutions, is responsible for compliance with information and publicity requirements, works to create partnerships and collaborations inside and outside the community. Together with the Team prepares periodic and annual reports. Performs his / her duties, described in detail in the job description.

Requirements for the position:

1. Completed higher education, at least a bachelor's degree;
2. Professional experience of at least 5 years;
3. Management experience of at least two years;
4. Experience in implementing a project, program, or strategy worth over BGN 100 000, funded by the EU or other international donors, and having at least 1 year of experience in implementing the Leader approach.

Additional requirements:

- Work with MS Office, Word, Excel, e-mail, and Internet;
- The applicant should know the municipal development plans;
- To be able to work on flexible working hours;
- To have the opportunity and motivation to participate in training and workshops within non-standard working hours;
- To be well acquainted with the requirements of the RDP 2014-2020, the Leader and CLLD approach, the operational programs, EU regulations, practices and procedures of the State Fund "Agriculture";
- Ability to plan and organize the activities of non-governmental organizations;
- Experience in the field of public procurement.

Position in the Team: Expert on implementation of the CLLD Strategy.

The main functions and responsibilities of the Expert are related to the implementation of the approved CLLD Strategy. During the implementation period, its responsibilities are: to consult potential beneficiaries by preparing written documents for each consultation, to participate in the preparation of guidelines and procedures for accepting project proposals in ISMMF, to work with external experts

and evaluators; to support the work of the Commission. Another part of the obligations is related to expert assistance and consulting of the beneficiaries in the implementation and reporting of projects, as well as to monitoring visits to the place of implementation, recording, and preparation of protocols and reports from the visits; summarizing the information in periodic and annual monitoring reports. Participates in the overall activities of the organization, incl. in the work with the target groups, including vulnerable and minority groups from the territory of implementation of the Strategy for CLLD. The duties and responsibilities of the Expert are described in detail in the job description.

Requirements for the position:

1. completed higher education, at least a bachelor's degree;
2. professional experience of at least two years;
3. experience in implementation of projects/contracts, financed by EU or other international donors, and at least 1-year experience in the implementation of the Leader approach.

Additional requirements:

- Work with MS Office, Word, Excel, e-mail, and Internet;
- To be well acquainted with the requirements of the RDP 2014-2020, the CLLD and OP approach, EU regulations, SFA practices, and procedures;
- To be able to work on flexible working hours;
- To be able to participate in training and workshops within non-standard working hours;
- Ability to analyse information, synthesize it, and present the results;
- A driver's license is an advantage.

Position in the Team: Accountant:

Organizes the accounting and document flow related to the financial activities of the Association and the implementation of the approved budgets in the application of the approach "Community-led local development" of the RDP for the period 2014-2020. Keeps a complete archive of accounting documentation. Processes primary expenditures supporting documents and keeps computer accounting with the relevant accounting programs and software products. Participates in the planning of annual budgets and the preparation of payment requests. Monitors the legality of the documents drawn up and the costs incurred. Prepares the annual financial statements and submits the relevant declarations, forms, etc. documents in the institutions, according to the Law on Accounting, Non-Profit Legal Entities, and the applicable legal framework for non-profit organizations and in particular for LIGs. Performs all duties detailed in the job description.

	<p>Requirements for the position:</p> <ol style="list-style-type: none"> 1. To have obtained a mandatory minimum degree "Bachelor" of completed higher economic education; 2. and corresponding actual professional experience in the specialty, as follows: <ol style="list-style-type: none"> (a) higher accounting and economic education and experience in the field of accounting, external and internal audit and financial inspection, tax audits, or as a lecturer in accounting and control, respectively: <ul style="list-style-type: none"> - for a master's degree - two years; - for a bachelor's degree - three years; (b) other higher economic education and 5 years of experience in the field of accounting, external and internal audit and financial inspection, tax audits, or as a lecturer in accounting and control; 3. Not to have been convicted of a crime of a general nature under Chapter Five and Chapter Six, Section I of the Special Part of the Penal Code. <p><i>To meet the requirements of Art. 18 of the Accounting Act.</i></p> <ul style="list-style-type: none"> - Having experience in implementing projects/contracts funded by the EU or other international donors is an advantage; <p><i>Additional requirements:</i></p> <ul style="list-style-type: none"> - Work with MS Office, Word, Excel, e-mail, and Internet; - To know the normative acts in the field of financial activity, accounting, and internal financial control; the normative acts related to the tax and insurance legislation; - Work with computer systems/accounting programs; - To know the RDP and the normative acts related to its implementation / in their part financial conditions /; The rules for work and the internal instructions of the LIG "Glavinitsa-Sitovo Kraydunavska Dobrudja"; - To be able to participate in training and workshops within non-standard working hours; - Ability to analyse financial and accounting information, synthesize it, and present the results. <p><i>(Annexes: Agreements for concluding an employment contract with the persons approved for employees, Job descriptions)</i></p>
--	--

8.3 The capacity of the Local initiative group to implement the CLLD strategy:

Association Local Initiative Group Glavinitsa-Sitovo Kraydunavska Dobrudja was established and registered during the implementation of a **project under sub-measure 431-2 "Acquisition of skills and achievement of public activity in the respective territories for potential local initiative groups in rural areas"** of the Program for Development of rural areas for the period 2007-2013. **The implemented contract under sub-measure 431-2** is with a term of 20 months and **amounting to BGN 148 323.00** without VAT. The main results of the implementation are **the establishment and registration of the LIG as a public-private partnership and preparation of a Local Development Strategy**, which has not been approved for funding. In the period from the registration in 2011 until August 2017, operating independently, the LIG has made efforts to fulfil its goals and mission, despite the lack of external project funding. A series of actions have been implemented to mobilize the local community and achieve civic activism. In the form of informational and informal meetings, forums, and pieces of training, local leaders, sector representatives, and stakeholders were identified, with the expectation that the LEADER approach would be applied on the territory, and later the CLLD. The LIG has applied for the announced admissions, but twice the LIG and the Strategies have not been approved for funding.

Conclusions were made about the reasons that hindered the approval and decisions were made to conduct a new comprehensive preparatory process to develop an up-to-date and consistent with the Guidelines announced in 2017. Admission Strategy.

The scope of the LIG coincides with the administrative boundaries of Glavinitsa Municipality and Sitovo Municipality, including their entire territory, which is homogeneous, with continuous boundaries and similar characteristics of development, which lags behind other parts of the district and the country. The civic potential of the territory has been maintained in the last few years with the efforts of the Management Boards, the assistance of the municipalities, and the key local leaders interested in the sustainable development of the rural area.

The local government of both municipalities during the past programming period has implemented a series of projects under the Rural Development Program 2007-2013 and OP "Human Resources Development". There are also implemented projects by the non-governmental organizations that are members of the LIG. This is a good prerequisite for successful implementation of the strategy with the participation not only of the Team and the Management Board but also with the inclusion of the capacity already owned by some of the members of the General Assembly. / *Annex Contract under sub-measure 431-2 of the RDP 2007-2013 /*

Independent office of the LIG: By decision of the Municipal Council, Glavinitsa Municipality has provided the LIG for free use for 10 years a detached one-story building with an area of 108 sq.m, for which a contract has been concluded between the mayor of Glavinitsa and the Chairman of the Board of LIG / attached contract /. In the building, provided entirely for the office of the LIG, are organized a **working room for the team, a separate meeting room for meetings and meetings, a separate room for the archive**. The premises are united by a corridor - with places for and visitors, there is also a bathroom. Meetings and events with more participants will be held in the **halls of the municipal councils** of the municipalities within the LIG, for which decisions have been made by the Municipality. **Conditions are provided for an accessible environment to the**

office for people with disabilities, for which an Opinion has been issued by the chief architect of Glavinitsa Municipality / *Annexes - Decision of the Municipality - Glavinitsa, Contract for free use for 10 years, with an attached deed of ownership and sketch of the premises, Opinion of the Chief Architect of the Municipality of Glavinitsa for the accessible environment; Order from the Chairman of the LAG for organizing the office/.*

Part of the furniture and equipment that will be used initially in the implementation of the Strategy was acquired with grants under a contract for the implementation of a preparatory measure under the LEADER approach from the period 2007-2013. Part of the equipment is provided by the LIG without the use of external funding.

The furnishing of the workroom for the three employees of the LAG includes 3 fully equipped workplaces with 3 desks, 3 work chairs, and office cabinets. The meeting room is furnished with a conference table and 10 chairs; a flipchart and an office cabinet. The archive room is furnished with 1 office cabinet, 1 desk with a container, and 1 work chair. The available **equipment** consists of 2 stationary computer configurations, 1 laptop, 1 multifunction device-printer, / copy / scan, 1 separate printer. If necessary, the laptop can also be used in the archive room. /*Annexes - documents proving the presence of furniture and equipment /.*

LIG Team: Personnel with appropriate qualifications and experience have been provided and for this purpose, a procedure has been conducted for the selection of suitable employees for the positions of executive director, expert, and accountant. Preliminary agreements have been concluded with the approved candidates for these positions. The persons approved by the Management Board of the LIG for the positions of “Executive Director” and “Expert in the implementation of Strategy for CLLD” meet all the requirements for education/qualification and experience. They have higher education and have experience working on projects funded by EU funds, incl. over 1-year of experience as a LEADER. Both future employees were in the team for implementation of a preparatory measure under the LEADER approach from the RDP 2007-2013 in the positions of coordinator and technical assistant. The executive director has a long professional experience and over 5 years of managerial experience as a director of an educational institution and deputy-mayor of Glavinitsa Municipality. He has experience as a project manager under the operational programs, mostly OP HRD. His experience in the LEADER approach is more than one year, as evidenced by the contract for a project coordinator with an implementation period of 20 months. The managerial experience of the Executive Director also includes the non-governmental sector: Chairman of the Management Board of LIG "Glavinitsa-Sitovo KD" in the period May 2016 - August 2017; Member of the Management Board of Local Initiative Fisheries Group "Glavinitsa-Tutrakan-Slivo Pole", Chairman of the Management Board of Non-profit Association. Meets the requirement for experience in implementing a project, program, or strategy worth over BGN 100,000, as only the LEADER project is worth BGN 148,323.

The person approved by the Management Board of the LIG for the position of "Expert in the implementation of Strategy for CLLD" has a master's degree in "Public Administration". Has over 1 year of experience in the Leader approach for the period 2007-2013 as a technical assistant assigned to an employment contract for 18 months, in the implementation of a project in the preparatory phase, when established and registered LIG "Glavinitsa - Sitovo" and is prepared the first strategy

for local development of the territory. The expert also has experience in implementing projects in the field of cultural heritage and folklore, as well as managerial and organizational experience in the non-profit sector as Chairman of the Community Center Board and head of folklore groups. He has professional experience in the social sphere as a social worker in the Municipality of Glavinitsa, which will be valuable in implementing the measures of the HRD OP and the SESG OP.

The person approved for the position of Accountant of the LIG has higher education in the specialty "Accounting and Control", has a long professional experience and experience as an accountant in budget organizations and as a chief accountant of the Municipality of Glavinitsa. Meets the requirements of the Accounting Act for the position of "accountant". He also has additional experience in financial and accounting management and the implementation of projects and project budgets. (*Attachments: CVs; Documents proving education, qualification, professional experience, managerial experience, and experience in project implementation, according to the requirements for the position*).

With adopted decisions of the Municipal Councils of Glavinitsa and Sitovo from meetings held in July 2017, a long-term local **financial resource of BGN 35 000** has been provided, with which the LIG will be able to start work immediately after the possible approval of the strategy for community-

led local development. **The provided local financial resources represent 5.37% of the funds for management and promotion of Strategy for CLLD**, for which the LAG will apply under sub-measure -651932.68 BGN / 333 333 EUR./*Attachments: Decisions of the Municipal Councils / 3.2% of the population - 494 inhabitants of 15,353, supports the Strategy for CLLD / Attachment: List /*

8.4. Description of the monitoring and evaluation system:

– **The process of monitoring and evaluating** the implementation of the Community-led Local Development Strategy is based on the overall framework of the Rural Development Program and the rules established by the LIG. Strategy monitoring is a process of purposeful and continuous generation, structuring, and processing of information related to the implementation; analysing this information and using the analyses to:

- establishing the progress of the implementation of the Strategy and ensuring an objective basis for the management decisions;
- in case of identified problems and necessity - application of corrective measures for achieving the goals set in advance in the Strategy;
- assessment of the ratio of resources - results and assessment of the processes;
- filling in up-to-date data in the reporting system;
- transparency in the community and awareness of stakeholders.

The LIG will report on the progress in the implementation of the Strategy through a **system for current monitoring and evaluation, to monitor and control the implementation of the qualitative, time, quantitative, and financial parameters**. The monitoring will also be a tool for monitoring and control of the funded projects, through which information can be obtained on the degree of implementation of the Strategy for CLLD measures given objectives and indicators. According to the Framework for Monitoring and Evaluation of the Common Agricultural Policy for the period 2014-2020, the evaluation is a systematic tool that examines the results and impacts of Strategy for CLLD, assessing the effectiveness, efficiency, and usefulness of measures and providing information on the decision-making process.

The evaluation relies mainly on the data and information collected through monitoring.

The purpose of the monitoring is related to the successful implementation and reporting of the implementation of the Strategy for CLLD, but also with making the right decisions regarding the activities of the LIG and the potential need to update the strategy. The two processes - implementation and monitoring of Strategy for CLLD, run in parallel, and the feedback received from the monitoring and evaluation can be used as a corrective to the work of the LIG, as well as to monitor compliance with the balance of funds spent against results.

The evaluation will answer the following questions:

- How effectively the measures are implemented;
- To what extent the implementation of the measures covers the territory of the LIG, as well as the identified stakeholders;
- To what extent the implementation of the funded projects contributes to the achievement of the objectives and indicators of the strategy;
- What problems arise in the process of implementation of the agreed projects;
- What problems arise in the process of administering the strategy;
- What corrective measures should be taken.

The general criteria, based on which conclusions will be made about the quality of performance are:

- Efficiency;
- Efficacy;
- Implementation of the strategic framework of the Strategy for CLLD;
- Achieved results;
- Degree of impact on local communities;
- Sustainability.

The monitoring and evaluation will be based on Internal Rules for Monitoring and Evaluation, developed by the LIG team and accepted by the Management Board. The LIG will monitor with the help of indicators of implementation and result at the level of project, measure, program, and strategy.

To monitor the implementation of the Strategy, the following values will be taken into account: number and value of submitted applications, number, and value of approved applications, number, and value of concluded contracts, number, and value of submitted payment applications, number, and value of approved payment requests, number and value of completed projects, the sustainability of project results.

The main sources of information will be ISMM /Information system for management and monitoring/ 2020 and the registers for project proposals of the LIG, which will be supplemented with each received information with the data from documentary sources - protocols, reports, reports, letters, etc. The following **indicators** will be monitored in the monitoring process of Strategy for

CLLD:

- ✓ the set quantitative and financial indicators, which take into account the results and the impact of the implementation of the Strategy;
- ✓ the schedule, organization, and methods of implementation;
- ✓ measures to provide information and publicity for implementation.

Additional, but no less important sources of information that will be used to gather the necessary information are:

- the minutes of the held general meetings and the meetings of the management and subsidiary bodies of the LIG;
- the minutes or other documents from the conducted working meetings of the employees of the LIG team;
- the prepared and published Guidelines for application for measures;
- ISMM 2020;
- the questions asked by beneficiaries by phone and e-mail;
- the interest was shown in the calls for proposals;
- the draft proposals submitted under the individual invitations;
- the monitoring of the implementation of the approved and financed projects;
- on-site visits;
- assisting the approved candidates in the preparation of payment applications to the Paying Agency and preparation of reports for reporting on the implementation;
- list of approved and rejected projects after the completion of the work of the Commission for selection of project proposals;
- certified copies of the concluded contracts and project files;
- register of the agreed projects;
- data on the economic development of the individual sectors in the territory of the LIG, as well as the socio-economic characteristics of the territory (data source will be National Statistics Institute, analyses of the “Agricultural statistics” Directorate at Ministry of Agriculture, Food and Forestry, including the Agricultural Accounting Information System - AAIS);
- Information from the database of rural areas of the RDP Directorate”.

The employees of the LIG will carry out the monitoring of the implementation of the Strategy for CLLD. The Strategy for CLLD implementation expert is directly involved in updating the databases. Beneficiaries of the Strategy will provide monitoring data to the applications for support. An **external expert evaluation** will be assigned periodically. Responsible for data collection,

processing, and storage will be the Executive Director of the LIG, who must organize and control the process.

Strategy Evaluation System: Evaluation is an activity that is carried out systematically based on certain standards and predetermined criteria for applicability, justification, effectiveness, efficiency, impact, and sustainability. The criteria may have the same or different weights for each of them. The evaluation system will contain information on the progress in the implementation of projects financed under the Strategy for CLLD. It will include the parameters: date of sending the notification letter to the beneficiary for an on-the-spot check; order of the executive director to perform the inspection; statement of findings for the conducted inspection. Each project supported by the Local Development Strategy /LDS/ will be inspected on-site at least twice during the period of its implementation. The data from the evaluation of the implementation of the LDS and the implementation of the projects within the LDS will be described in the Monitoring Reports and will become part of the annual progress reports.

The inspections themselves can be of three types:

- ✓ thematic inspection;
- ✓ multilateral or comprehensive verification;
- ✓ signal inspection.

The evaluation process of the Strategy and the projects to it: When implementing the Strategy, activities for monitoring and control of the implementation of the strategy itself and the projects approved for implementation under the individual measures are obligatory. This is done through pre-set indicators at the Strategy level, at the strategy measure level, and the project level when preparing the application and business plan. The system of indicators corresponds to the basic principles of planning and corresponds to the goals and the expected results. Responsible for project monitoring is the Strategy Implementation Expert, who conducts on-site visits and prepares a monitoring report, which he proposes for approval by the Executive Director and for approval by the LIG Management Board. Monitoring reports are prepared at least twice a year. At the end of the implementation of the Strategy, a summary monitoring report is prepared. The monitoring and control of the projects shall be carried out for five years from the execution of the final payment of the grant. Where applicable, indicators for monitoring the state of the environment or its components and/or indicators for monitoring the impact of projects on the environment shall be included. Such measures and indicators may be prescribed at the level of project proposal preparation in the mandatory procedure for coordination of the investment proposal with the competent environmental authorities.

Self-evaluation monitoring: The LIG will pay special attention to the self-assessment process. This is necessary due to the important role that the local community should play in the

implementation of the CLLD approach. The LIG will carry out a self-assessment (evaluation of its work) regarding the progress in the implementation of the Strategy for CLLD through the baseline indicators, as well as through the budget indicators, the performance indicators, and the result indicators. The assessment will be based on the information gathered through the monitoring system. Self - the Team of the LIG, including and members of the Management Board, will perform evaluation of the work of the bodies of the LIG and the executive team of the LIG in the implementation of Strategy for CLLD. The Executive Director will be responsible for organizing and conducting the evaluation. A timetable for the self-assessment will be prepared, which will be in line with the Strategy for CLLD implementation schedule and the preparation of the annual progress reports. A self-evaluation process will be initiated at least once a year and the results will be part of the annual progress report. In the self-assessment process, the LIG will be guided by the principle of broad stakeholder participation. Experts from other LIGs may also be involved to introduce a partnership element in the verification. A set of tools will be used for self-assessment: data analysis, interview, research, brainstorming, focus groups, good practices, the experience of other LIGs.

The LIGs self-evaluation process will go through the following stages:

1. The LIG itself identifies the need to assess an aspect of the implementation of the Strategy, decides to start, and selects the methods.
2. The LIG shall prepare the questions/evaluation criteria and a monitoring schedule.
3. The data necessary for the self-evaluation are collected.
4. The data are analysed, conclusions and answers are prepared.
5. The strategy and the activity of the LIG are changed/redirected following the results of the evaluation and the formulated recommendations, and if necessary, the obligatory administrative procedures are performed. The results of the self-evaluation are included in the annual reports.

Risk assessment: In the process of monitoring and evaluation/self-assessment, obstacles to monitoring, evaluation, and data collection may arise. Therefore, it is necessary to assess the risks - they should be forecasted in advance and steps should be identified to prevent them or to reduce/overcome the negative consequences of their occurrence. Possible risks in data collection, monitoring, and evaluation are: non-compliance with voluntary commitments to provide information by beneficiaries due to lack of information; malfunctioning of on-the-spot checks due to unclearly written or non-compiled with procedural requirements; lack of objectivity in performing the self-assessment. To prevent the occurrence of these obstacles, it is necessary to carefully plan the deadlines for updating and maintaining the information databases, to clearly define procedures, to comply with the deadlines, to take measures to inform the beneficiaries; to attract active members of the LIG to participate in the processes of monitoring, evaluation, and self-evaluation, in compliance with the requirement to avoid conflicts of interest.

Transparency and openness to the beneficiaries, as well as the work of providing support in their

application and subsequently - in the implementation of funded projects, will be a guarantee for obtaining the necessary information to complete the information database of the LAG. The rules for the management and monitoring of the implementation of the Local Development Strategy, the assessment of the progress in the implementation of the Local Development Strategy, and the self-assessment will allow timely forecasting and finding a solution in case of future obstacles, to ensure unhindered achievement of the objectives of LDS. The teamwork of the LIG staff and the interaction with its other bodies is of extreme importance. In compliance with the rules for periodic and correct goal setting and teamwork in the work, it will be possible to overcome any force majeure circumstances, and in case of delays - they will be able to compensate without violating the terms of the contract. An important part of the monitoring and evaluation system will be **the procedure for administration and reporting of irregularities, developed as part of the overall system to prevent and/or early detection of "irregularities and fraud", as defined by the EC, the methods of reporting and implementation of signal checks.**

9. Monitoring and evaluation indicators:

9.1. Indicators for the overall implementation of CLLD Strategy, including the number of jobs created: (*not more than 1 page*)

No.	Indicator	Unit	Target value	Source of information
1	The total amount of public aid	BGN	3 442 230	LIG reports
2	Total number of Strategy for CLLD projects	Pcs	55	LIG reports
3	Projects supported under the RDP	Pcs	44	LIG reports
4	Projects supported under the OP SESG	Pcs.	4	LIG reports
5	Projects supported under OPHRD	pcs	4	LIG reports
6	Projects introducing innovations – Strategy for CLLD	pcs	15	LIG reports
7	Projects of farmers in a sensitive sector or organic farming	pcs	6	LIG reports
8	Modernized farms, including through energy efficiency	pcs	8	LIG reports
9	Supported projects for non-agricultural activities, incl. new for the territory	pcs	6	LIG reports
10	Projects for education, social-health and labour integration OP HRD and OP SESG	pcs	7	LIG reports
11	Total participants from the target groups under item 8, received project support	pcs	170	LIG reports

12	Jobs created in the supported RDP projects	pcs	36	LIG reports
13	Enterprises that have introduced new models and systems after support under OPHRD	pcs	20	LIG reports
14	Jobs with improved working conditions after the support under OPHRD	pcs	30	LIG reports
15	Technical infrastructure projects	pcs	2	LIG reports
16	Social and/or educational infrastructure projects	pcs	2	LIG reports
17	Public Tourism Infrastructure Projects	pcs	2	LIG reports
18	Business Sector Projects	pcs	34	LIG reports
19	Public Sector Projects	pcs	11	LIG reports
20	Non-profit sector projects	pcs	10	LIG reports
21	Children and young people from marginalized groups integrated into the education system after support under OP SESG	pcs	80	LIG reports
22	Integrated into the labour market inactive and unemployed persons after support under OPHRD	Pcs	30	LIG reports
23	Number of projects for the utilization of natural and cultural heritage	pcs	6	LIG reports

9.2. Measure indicators:

Title of the measure supported by the EAFRD RDP – Strategy for CLLD	Indicator	Amount
SOURCE OF MEASUREMENT DATA	Total public costs in BGN	330 500
	Number of agricultural farms that received support under the measure	6
	Several modernized agricultural holdings, incl. by introducing innovations and/or new technologies	4
	Number of projects related to supporting farms from the priority (sensitive) sectors under the measure	2
	Number of jobs created in supported projects	10
	REPORTS AND DATABASE LIG	
RDP, M04 – Investments in tangible assets (Article 17 of Regulation (EU) No.1305/2013) Measure 4.1. Support for investments in farms	Total public costs in BGN	5920
	Number of farms receiving support	1

RDP, M04 - Investments in tangible assets (Article 17 of Regulation (EU) No. 1305/2013) Measure 4.1.2. Support for investments in agricultural holdings under the Thematic sub-program for small farms	under the measure	
	Number of projects related to supporting of holdings from the priority sectors of Strategy for CLLD	1
	Several modernized agricultural holdings, incl. by introducing innovations and/or new technologies	1
	Number of jobs created in supported projects	1
REPORTS AND DATABASE MIG		
RDP, M04 - Investments in tangible assets (Article 17 of Regulation (EU) No. 1305/2013) Measure 4.2 Investments in processing/marketing of agricultural products	Total public costs in BGN	206 000
	Number of projects receiving support for investments in processing and trade in agricultural products	2
	Number of projects of farmers receiving support for investments in the processing of raw materials from the priority sectors	1
	Number of jobs created in supported projects	8
REPORTS AND DATABASE MIG		
RDP, M06 - Development of holdings and enterprises (Article 19 of Regulation (EU) No. 1305/2013) Measure 6.4 Investments in support of non-agricultural activities	Total public costs in BGN	294 000
	Number of projects and beneficiaries receiving support for investments in non-agricultural activities	6
	Number of farms receiving support for investments in non-agricultural activities	1
	Number of projects introducing innovative and/or environmental practices and/or technologies	2
	Number of projects for production activities	2
	Number of jobs created in supported projects	10
	REPORTS AND DATABASE MIG	
RDP, M07 Basic services and rural renewal in rural areas (Article 20 of Regulation (EU) No. 1305/2013)	Total public costs in BGN	855 580
	Number of projects supported for	19

Measure 7.2. Investments in the creation, improvement, or expansion of all types of small-scale infrastructure REPORTS AND DATABASE MIG	investment in small-scale infrastructure	
	Number of supported sites for educational and social infrastructure	6
	Number of residents benefiting from improved services/infrastructure	15 000
	Number of settlements with newly built or improved infrastructure	12
RDP, M07 Basic services and rural renewal in rural areas (Article 20 of Regulation (EU) No. 1305/2013) Measure 7.5. Investments for public use in recreation infrastructure, tourist infrastructure REPORTS AND DATABASE MIG	Total public costs in BGN	117 350
	Number of projects supported by the measure	2
	Number of projects providing a safe and/or accessible environment	2
	Number of residents who use improved infrastructure for recreation, tourist infrastructure	12 000
Measure, outside the RDP and Regulation (EU) No. 1305/2013), meeting their objectives. Measure 19.05. Research, conservation, and utilization of natural resources and cultural heritage of the territory of the municipalities Glavinitsa and Sitovo REPORTS AND DATABASE MIG	Total public costs in BGN	146 450
	Number of projects supported by the measure	8
	Number of festivals, exhibitions, etc. local events to promote rural natural and cultural heritage	5
	Number of participants in events and activities promoting intercultural interactions between different ethnic groups	630
	Number of studies and programs related to the protection of natural and cultural heritage	6
	Number of projects through which material assets have been acquired, for better resource provision of community centers, NGOs	4
	Number of inhabitants who benefit from project results	10 000

INDICATORS BY MEASURES FROM OPERATIONAL PROGRAMS – ESF

Operational Program “Science and Education for Smart Growth”, Measure 3.9 “I’m learning to succeed”

PERFORMANCE INDICATORS			RESULT INDICATORS	
	Indicator	Target value	Indicator	Target value
1	Several children, students, and young people from marginalized communities (including Roma) participating in measures for educational integration and reintegration.	100	Number of children, students and young people from marginalized communities (including Roma) integrated into the education system	80
IMPACT INDICATORS				
	Indicator	Target value		
2	Number of other participants involved in activities to support educational integration and reintegration	350		
	Parents, guardians	100		
	Classmates	250		
OPHRD MEASURE 1.7. "ADAPTATION OF WORKERS AND ENTREPRENEURS TO CHANGE, INTRODUCTION OF SOCIAL AND NON-TECHNOLOGICAL INNOVATIONS IN ENTERPRISES"				
PERFORMANCE INDICATORS			RESULT INDICATORS	
	Indicator	Target value	Indicator	Target value
1	Number of enterprises received support	25	Several enterprises have introduced new systems, practices, and tools for human resources development and labour organization	20
	Number of employees, including self-employed, in participation	70	Number of participants from supported enterprises whose labour market situation is better within 6 months after leaving the operation	55
IMPACT INDICATORS				
	Indicator	Target value		
2	Number of participants included in project activities under the measure Pieces of training, workshops, seminars, etc. – source lists,	130		

	project reports					
OPHRD MEASURE 2.1. "SOCIAL-LABOR AND HEALTH INTEGRATION"						
PERFORMANCE INDICATORS				RESULT INDICATORS		
	Indicator	Unit	Target value	Indicator	Unit	Target value
1	Participants gained access to social and health care	pcs	100	Participants who 6 m. after completion of the project have access to social and health services	pcs	85
2	Participants who have gained access to services related to labour integration	pcs	70	Participants who at the end of the project have started looking for a job / are engaged in education/training / have received a qualification and have a job	pcs	55
IMPACT INDICATORS						
	Indicator	Unit	Target value			
3	Participants, included in activities in initiatives for social economic integration and overcoming the negative stereotypes	pcs	500			

10. Compliance with EU horizontal policies

10.1. Gender equality and non-discrimination

- application of the principle of gender equality;	The strategy has been developed and will be implemented following the principle of equality between women and men, which is a key horizontal priority of the European Community. The principle of equality has been explained and adopted by the local community already at the stage of developing the Strategy. It will be consistently defended in the process of implementation of Strategy for CLLD, in terms of membership, access to information, application and selection of projects, participation in activities. Mechanisms for its observance are the provided channels for information and publicity, the statute of the LIG, the rules of operation.
- contributing to validation of the	The principle of equal opportunities has been applied in the establishment of the LIG and in the preparation of the Strategy for

<p><i>principle of equal opportunities;</i></p>	<p>CLLD, which took place in a transparent process of information and promotion, in compliance with the principle of voluntary participation of all comers. It is also normatively guaranteed through the procedure for application and evaluation of project proposals electronically through ISMM 2020, as well as through advance the disclosed objective criteria for carrying out the evaluation itself, developed with the participation of the community.</p>
<p><i>- making of terms of prevention of discrimination</i></p>	<p>The principle of non-discrimination set out in the European Directives means the prevention of unfavourable treatment of a person on the grounds of sex, race, color, ethnic or social origin, genetic characteristics, language, religion or beliefs, political or another opinion, belonging to a national minority, property status, birth, disability, age or sexual orientation than another person is treated in comparable, similar circumstances. This principle was applied during the preparation of the Strategy for CLLD on the territory of the municipalities of Glavinitsa and Sitovo, which is characterized by ethnic, religious, and cultural diversity. The research, analysis, and counselling and discussion activities took into account the needs of all local people, regardless of their origin, ethnicity, gender, social status. Moreover, local leaders and active participants have expressed an opinion for the support of the most vulnerable social and ethnic groups, which is reflected in the selection of measures for specific goals, through which to achieve the priorities and strategic goal of Strategy for CLLD. In the process of implementing the strategy, the prevention of any conditions for discrimination in all its possible forms will be observed.</p>

10.2. Sustainable development (environmental protection)

"Sustainable development" is finding a balance between environmental protection, economic progress, and social development. The principle of sustainable development is enshrined in the Strategy for CLLD to ensure the achievement of the goals of the current generations without causing damage and risks to the next generations, minimizing the adverse effects of human activity on natural resources; linking economic with environmental efficiency and natural balance; solving issues related to economic and natural living conditions. Environmentally friendly projects contributing to sustainable development and environmental protection will be promoted.

10.3. Promoting employment and competitiveness:

The principle of promoting employment and competitiveness is observed in the preparation, implementation/criteria for project selection / and monitoring at the project level. Strategy for CLLD has an integrated approach, ensuring the "technology-knowledge" link, through investments in tangible assets and the development of local human resources. Investments in tangible assets for technological modernization of agricultural and non-agricultural activities on the territory, the diversification of the rural economy through entrepreneurship, and skills in new areas are prerequisites for competitiveness.

10.4. Compliance with European Structural and investment funds - funded programs:

The EU Structural Funds programs contribute to the implementation of the Union's strategy for smart, sustainable, and inclusive growth and the achievement of economic, social, and territorial cohesion. The Europe 2020 strategy has 5 headline targets: **employment, innovation, climate change and energy, education, poverty, and social exclusion**. Of these, all five objectives have a direct or indirect connection with the objectives, priorities, and tasks of the developed strategy, which offers a targeted and integrated policy for the preservation of local specifics and upward sustainable development, with concentration and coordination of resources, efficiency, and effectiveness in their management, the balance between the economic and social sphere. Strategy for CLLD is based on the **Rural Development Program 2014-2020**, which following EU policies for the same period has 3 objectives: Competitiveness, higher incomes, and quality food; Ecology and nature; Poverty reduction, social inclusion, quality of life. To achieve complementarity and synergy, 3 measures from the OP, financed through the ESF, are included in the Strategy for CLLD. Strategy for CLLD is in line with the main goal of **OP "Human Resources Development" 2014-2020**: "Quality of life by improving human capital; Employment, Productivity, Education and Lifelong Learning; Social inclusion "through measure 1.7., Aimed at enterprises, workers and working conditions, and measure 2.1. for social, health, and labour integration of vulnerable marginalized groups.

OP "Science, Education and Smart Growth": Measure 3.9 is included in the Strategy for CLLD under the objective "Support for social inclusion of children and students from marginalized groups through access to quality education", operation "Ensuring access to quality education in small settlements and hard-to-reach areas" from Priority area 3 – Investment priority 9.ii of the OP.

